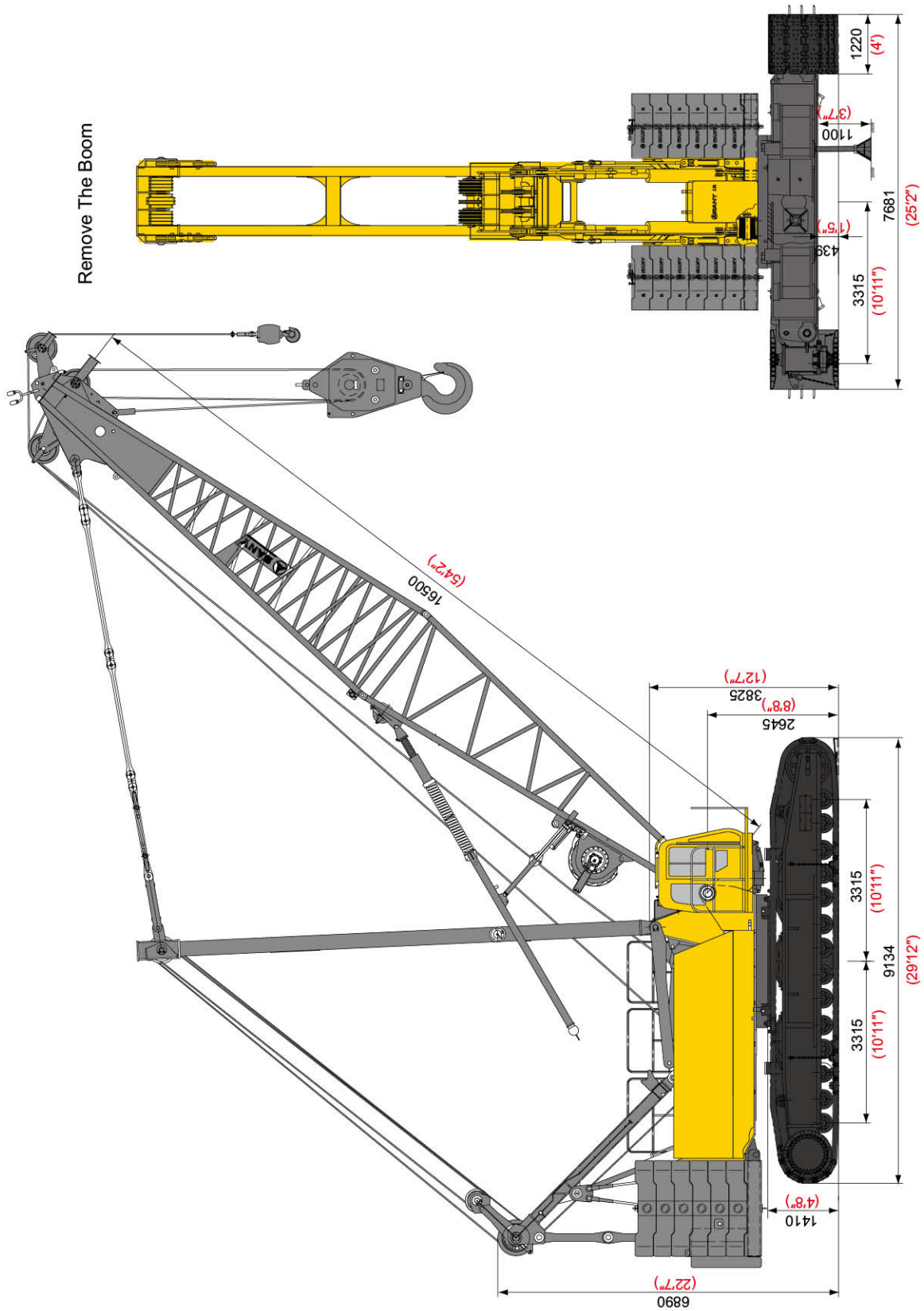


Outline Dimensions

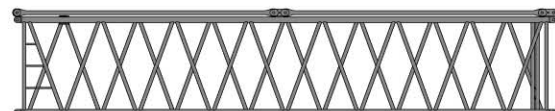
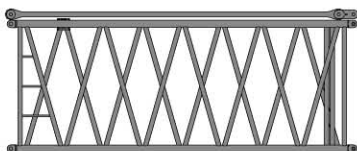
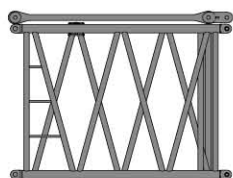
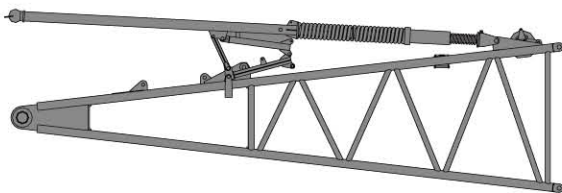
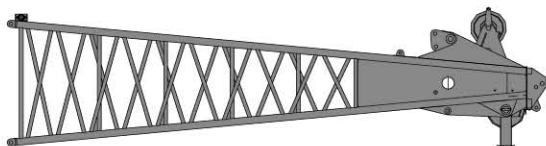
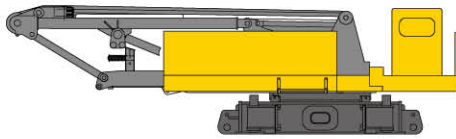


Outline Dimensions of SCC2500C Hydraulic Crawler Crane

Performance Data

Main Performance Data of SCC2500C Crawler Crane			
Performance Index		Unit	Data
H Operating Condition	Max. Lifting Load	mt (Ust)	260 (286.6)
	Boom length	m (ft)	16.5~91.5 (54'2"~300'2")
	Boom Luffing Angle		30°~81°
FJ Operating Condition	Full Extensional Boom + Full Extensional Fixed Jib	m (ft)	76.5+31 (250'12"+101'8")
	Jib Offset Angle		10°, 30°
LJ Operating Condition	Max. Lifting Moment	mt·m (lb·ft)	71.4×9.8 (157,400×32'2")
	Full Extensional Boom + Full Extensional Luffing Jib	m (ft)	(61.5+52) / (52.5+61) (201'9"+170'7")/ (172'3"+200'2")
	Boom Luffing Angle		63°~88°
	Jib Offset Angle		15°~75°
Speed Data	Wire Speed of Main (Aux.) Hoisting Winch (Outermost Layer)	m/min (fpm)	0~143 (0~499)
	Wire Speed of Main Luffing Winch (Outermost Layer)	m/min (fpm)	(0~31) ×2 (0~101.7) ×2
	Wire Speed of Aux. Luffing Winch (Outermost Layer)	m/min (fpm)	0~34 (0~111.6)
	Slewing Speed	rpm	0~1.8
	Traveling Speed	km/h (mph)	0~1.04/0~0.51 (two speeds) (0~0.65)/(0~0.32) (two speeds)
	Gradeability		30%
Engine	Output Power	kw (hp)	242 (324.5)
	Rated Rotational Speed	rpm	2100
Transport Data	Max. Transport Weight of Single Part (With main and aux. hoisting winches)	kg (lb)	59,000 (130,070)
	Transport Dimensions (Length × Width × Height)	mm (ft)	13700×3400×3400 (44'11"×11'2"×11'2")
	Average Ground Bearing Pressure	MPa (psi)	0.11 (15.97)

Transport Dimensions



Basic Machine (with Main&Aux. Winches) × 1		
Length	13.70m	44' 11"
Width	3.40m	11' 2"
Height	3.40m	11' 2"
Weight	59t	130071lb

Crawler Assembly × 2		
Length	9.15m	30' 0"
Width	1.22m	4' 0"
Height	1.38m	4' 6"
Weight	27t	59524lb

Boom Tip × 1		
Length	9.26m	30' 5"
Width	2.34m	7' 8"
Height	2.25m	7' 5"
Weight	3.6t	7937lb

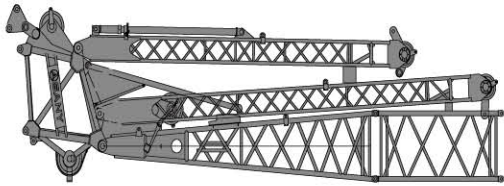
Boom Base × 1		
Length	8.24m	27' 0"
Width	2.34m	7' 8"
Height	2.25m	7' 5"
Weight	4.9t	10802lb
Including Aux. Luffing Winch	7.3t	16093lb

3m (9' 10'') Boom Insert × 1		
Length	3.14m	10' 4"
Width	2.34m	7' 8"
Height	2.25m	7' 5"
Weight	1.3t	2866lb

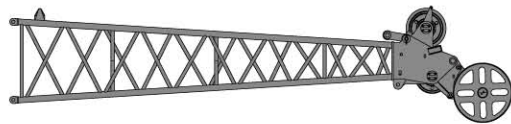
6m (19' 8'') Boom Insert × 2		
Length	6.14m	20' 2"
Width	2.34m	7' 8"
Height	2.25m	7' 5"
Weight	1.9t	4189lb

12m (39' 4'') Boom Insert × 5		
Length	12.14m	39' 10"
Width	2.34m	7' 8"
Height	2.25m	7' 5"
Weight	3.4t	7496lb

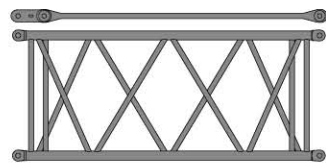
Transport Dimensions



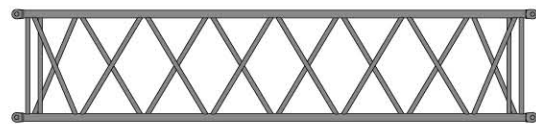
Tower Group		× 1
Length	11.8m	38' 9"
Width	1.75m	5' 9"
Height	3.20m	10' 6"
Weight	7.1t	15653lb



Luffing Jib Tip		× 1
Length	7.02m	23' 0"
Width	1.50m	4' 11"
Height	1.41m	4' 8"
Weight	1.1t	2425lb



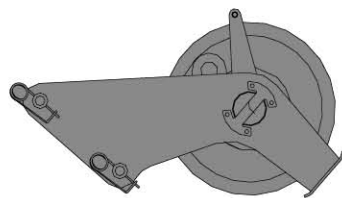
3m (9' 10'') Luffing Jib Insert		× 1
Length	3.11m	10' 2"
Width	1.50m	4' 11"
Height	1.31m	4' 4"
Weight	0.3t	661lb



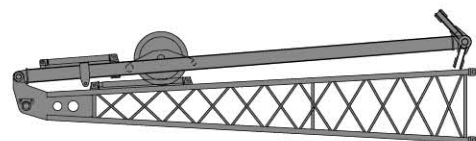
6m (19' 8'') Luffing Jib Insert		× 1
Length	6.11m	20' 1"
Width	1.50m	4' 11"
Height	1.31m	4' 4"
Weight	0.6t	1323lb



12m (39' 4'') Luffing Jib Insert		× 3
Length	12.11m	39' 9"
Width	1.50m	4' 11"
Height	1.31m	4' 4"
Weight	1.4t	3086lb

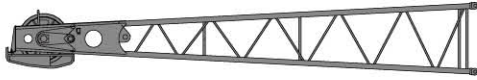


Extension Jib for Boom		× 1
Length	0.98m	3' 3"
Width	0.29m	0' 11"
Height	0.86m	2' 10"
Weight	0.3t	661lb

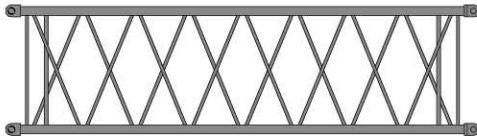


Fixed Jib Base and Jib Strut		× 1
Length	5.18m	16' 12"
Width	1.01m	3' 4"
Height	0.84m	2' 9"
Weight	0.7t	1543lb

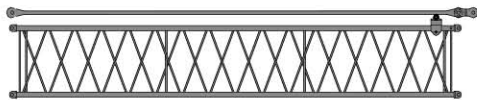
Transport Dimensions



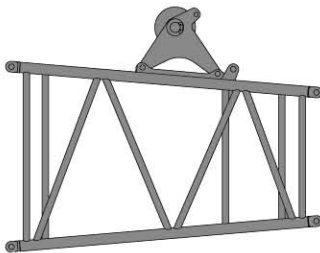
Fixed Jib Tip		×1
Length	5.47m	17' 11"
Width	1.01m	3' 4"
Height	0.84m	2' 9"
Weight	0.4t	882lb



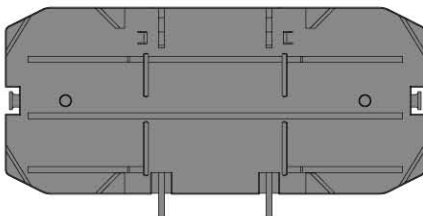
3m (9' 10'') Fixed Jib Insert		×1
Length	3.08m	10' 1"
Width	1.01m	3' 4"
Height	0.84m	2' 9"
Weight	0.2t	441lb



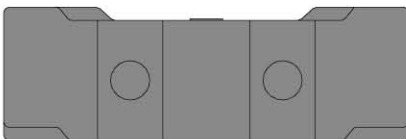
6m (19' 8'') Fixed Jib Insert		×3
Length	6.08m	19' 11"
Width	1.01m	3' 4"
Height	0.84m	2' 9"
Weight	0.4t	882lb



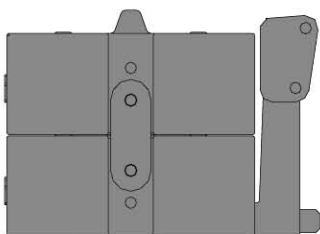
Transition Insert		×1
Length	3.70m	12' 2"
Width	2.23m	7' 4"
Height	2.33m	7' 8"
Weight	1.2t	2646lb



Counterweight Tray		×1
Length	4.65m	15' 3"
Width	1.96m	6' 5"
Height	0.68m	2' 3"
Weight	13.2t	29101lb

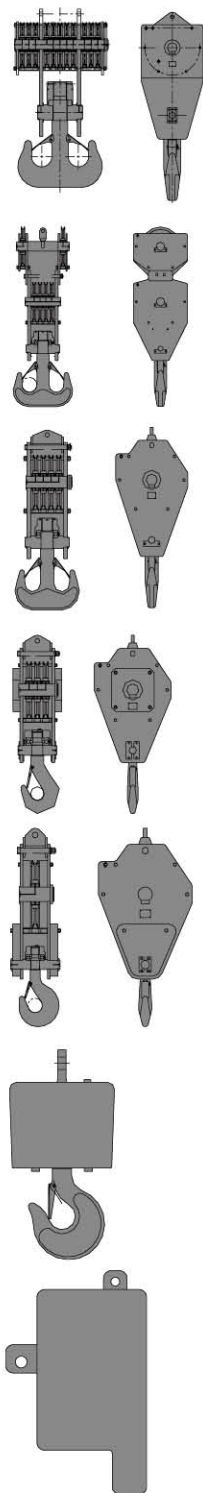


Counterweight Block		×12
Length	1.96m	6' 5"
Width	1.33m	4' 4"
Height	0.42m	1' 5"
Weight	6t	13228lb



Central Ballast Block		×2
Length	1.75m	5' 9"
Width	1.44m	4' 9"
Height	0.97m	3' 2"
Weight	12.4t	27337lb

Transport Dimensions



260t (286USSt) Hook Block		× 1
Length	1.24m	4' 1"
Width	0.90m	2' 11"
Height	2.61m	8' 7"
Weight	4.3t	9480lb

150t (165USSt) Hook Block		× 1
Length	0.99m	3' 3"
Width	0.90m	2' 11"
Height	3.06m	10' 0"
Weight	3.1t	6834lb

100t (110USSt) Hook Block		× 1
Length	0.90m	2' 11"
Width	0.80m	2' 7"
Height	2.18m	7' 2"
Weight	2t	4409lb

80t (88USSt) Hook Block		× 1
Length	0.90m	2' 11"
Width	0.57m	1' 10"
Height	2.13m	6' 12"
Weight	1.5t	3307lb

35t (39USSt) Hook Block		× 1
Length	0.90m	2' 11"
Width	0.44m	1' 5"
Height	1.91m	6' 3"
Weight	1.2t	2646lb

13.5t (15USSt) Hook Block		× 1
Length	0.47m	1' 7"
Width	0.47m	1' 7"
Height	0.93m	3' 1"
Weight	0.5t	1102lb

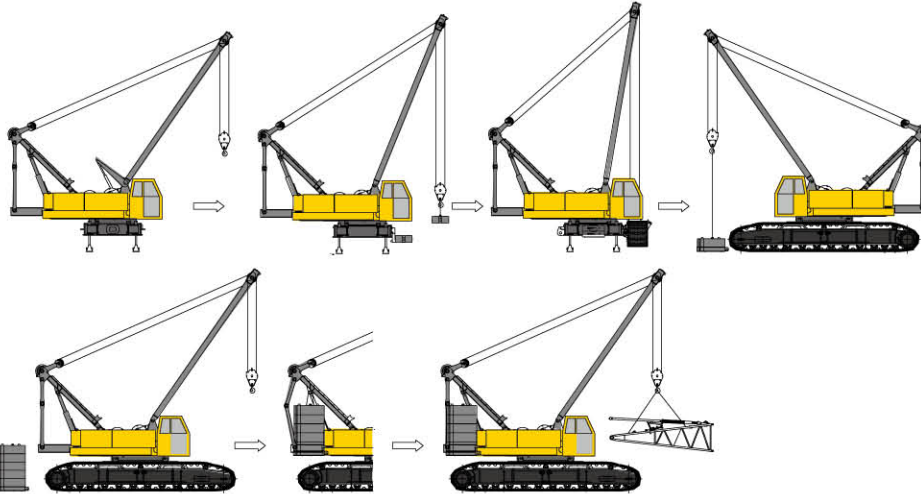
Additional Counterweight Block		× 2
Length	1.0m	3' 3"
Width	0.9m	2' 11"
Height	1.54m	5' 1"
Weight	5.8t	12787lb

Notes:

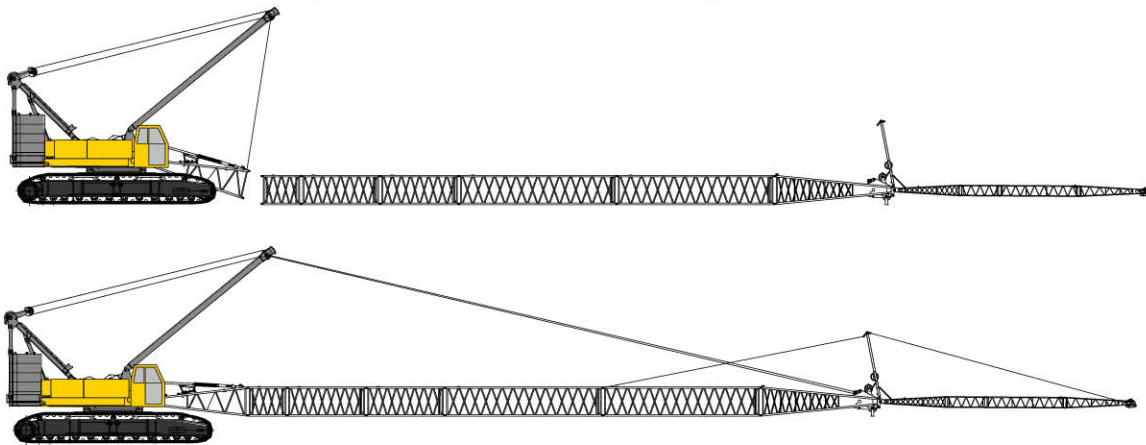
- 1.The transport dimensions of main parts are not drawn to proportion. The dimensions in the sketches are design values excluding packages.
- 2.The weight is design value and there may be difference caused during manufacturing.

Self-assembly/disassembly

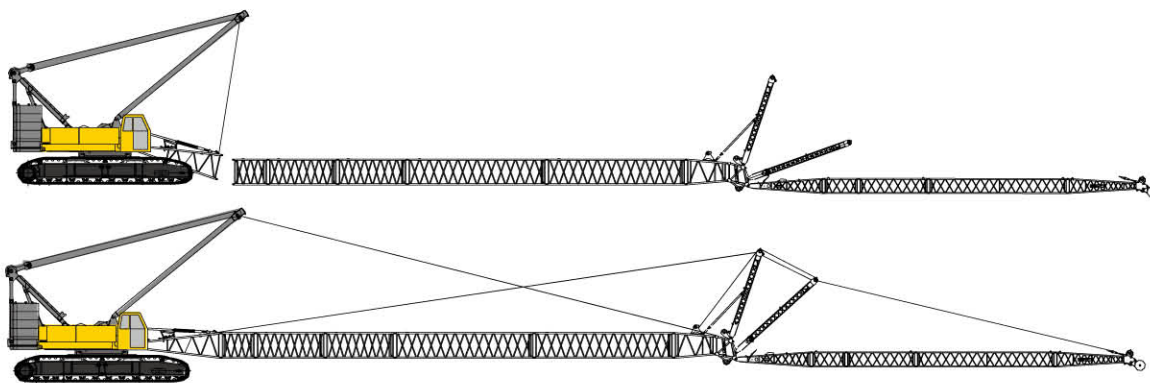
This crane is equipped with functions including the self-assembly/disassembly of crawler tracks and self-assembly/disassembly of counterweight. In the process of assembly, the crawler traveling tracks shall be assembled first and then the counterweight. In the process of disassembly, the counterweight shall be disassembled first and then the crawler traveling tracks. See the figure for detailed operation procedures.



Schematic Diagram of Self-assembly of Crawler Frame and Counterweight
(perform disassembly in exactly reverse order)



Schematic Diagram of Fixed Jib Assembly



Schematic Diagram of Luffing Jib Assembly

Specifications



Upperworks



Engine

The imported Cummins Model QSL9 (Tier 3) 4-stroke diesel, inline 6-cylinders, water-cooled, electronic-controlled, rated at 242kW(325hp)/2100rpm. The maximum torque output is 1424N•m(1050lb•ft) at 1500rpm.

One 400L(106gal.) capacity fuel tank, equipped with both an oil lever and an electronic oil gauge to show oil level.

The engine is equipped with peripheral equipment designated by Cummins, including: an air-pre filter, a two-stage air filter, a low-noise fan, and a composite cooler.



Electrical Controlling System

Composed of central controlling unit, man-machine interfaces, sensors, actuators, and connecting wires.

Data transmission between the controller, display, engine, load moment limiter, and remote controlling termination is achieved by CAN bus technology, enabling high reliability for the system.

Information including working parameters (e.g. rotational speed of the engine, fuel volume, engine oil pressure, servo pressure, wind speed, engine working hours) and working state (e.g. main winch lockup, main luffing winch lockup, slewing lockup) is shown on the display.

Security: design of electrical system fully complying with CE standards, multi safety limit switches, full range of safety signals, main components complying with CE standards.

Reliability: products of internationally or industrially well-known brands are employed in main electrical components, which include the load moment limiter, controller, display, sensor, detecting switches, control switches, wires and cables.

Amenity: all electrical parameters and states (e.g. rotational speed of the engine, fuel volume, engine oil pressure, servo pressure, wind speed, engine working hours, main winch lockup, main luffing winch lockup, and slewing lockup) are clearly seen on the instrument displays; separated design of assembling mode and operating mode fixes major hydraulic actions and hence reduces the operating workload for operator.

Advance: CAN bus technology for overall crane electrical system, power limit control for load, redundant transmission verification, and optional GPS and remote monitoring system.



Hydraulic System

The Hydraulic system consists of three parts: main circuit system, servo control system and auxiliary system. Main components are all sourced from Rexroth or Kawasaki.

Kawasaki system is an open-loop, positive flow controlled, steady startup, smooth stop and diversion; rapid operating response, less heat output and long service life.

The Rexroth system can achieve LUDV, i.e. Load Independent Flow Distribution. The use of hydraulic proportional pilot control enables acute and inching operation.

System pressure is 31.4MPa (4553psi).



Main & Auxiliary Hoisting Mechanism

The main winch drum and the auxiliary winch drum are separately driven and easy to install. The built-in, wet-type brakes feature low wear and maintenance-free, ensuring safety sufficiently.

The variable displacement hydraulic motor can adjust its displacement automatically according to load to achieve the maximum winch speed.

Quality rotation-resistant wire rope enables hoisting safety and long service life.

Bag-type wire rope end makes installing and dismantling wire rope convenient.

Main Hoisting Winch	Winch Diameter	615mm (24~3/16")
	Outermost Speed of Wire Rope	0 ~ 143m/min (0 ~ 469fpm)
	Wire Rope Diameter	26 mm (1")
	Wire Rope Length of Main Winch	480m (1574'10")
	Rated Single-line Pull	14.5t(32,000lb)

Specifications

Auxiliary Hoisting Winch	Winch Diameter	615mm (24~3/16")
	Outermost Speed of Wire Rope	0 ~ 143m/min (0 ~ 469fpm)
	Wire Rope Diameter	26 mm (1")
	Wire Rope Length of Aux. Winch	390m (1279'6")
	Rated Single-line Pull	14.5t(32,000lb)



Slewing Mechanism

Driven by slewing motor, allowing 360° rotation.

Slewing Brake: spring loaded, blade-type

Slewing lock: a locking pin and a sensor are provided to protect the upperworks from rotation during traveling with load or transportation.

Slewing ring: triple-row roller slewing ring.

Max.slewing speed: 1.8r/min(with basic boom, no load)



Luffing Mechanism

Main luffing winch is equipped with ratchet and pawl to ensure the safety of the boom system at non-working condition.

Main Luffing Winch	Winch Diameter	592mm (23~5/16")
	Outermost Speed of Wire Rope	(0 ~ 31) × 2 m/min (0 ~ 102) × 2 fpm
	Wire Rope Diameter	22mm (7/8")
	Wire Rope Length of Main Luffing Winch	350m (1148'3")
	Rated Single-line Pull	11.2t (24,700lb)



Auxiliary Luffing Mechanism

Auxiliary luffing winch is equipped with ratchet and pawl to ensure the safety of the boom system at non-working condition.

Auxiliary Luffing Winch	Winch Diameter	592mm(23~5/16")
	Outermost Speed of Wire Rope	0 ~ 34m/min (0 ~ 112fpm)
	Wire Rope Diameter	22mm (7/8")
	Wire Rope Length of Aux. Luffing Winch	265m (869'5")
	Rated Single-line Pull	11.2t(24,700lb)



Counterweight

Standard counterweight is 85.2t (187,800lb) in total, consisting of twelve 6t (13,200lb) counterweight blocks and one 13.2t(29,100lb) counterweight tray. The counterweight can achieve self-assembly/disassembly.

Optional is 5.8t (12,800lb) additional counterweight block, which can improve the lifting capacity of the crane in certain operating conditions with medium or long booms. The additional counterweight cannot achieve self-assembly/disassembly.



Driver's Cab

The newly-designed and fully-enclosed cab with Sany characteristics has broader view area. Inside are located air conditioner, control levers, adjustable seat, operation panels, armrest boxes, display of load moment limiter, audio-visual alarm, and display of monitoring system according to ergonomics.

Tilting of the cab broadens the operator's view area and improves the operation safety. Capability to rotation can reduce transport volume.

The cab can tilt up by 20° according to actual requirement, or rotate to the front of the platform to facilitate transportation.

Specifications



Controlling Operation

Levers connected to the traveling pedals are in the front lower part of operator position.

The left traveling pedal (control lever) operates the left crawler frame assembly, and the right traveling pedal (control lever) operates the right crawler frame assembly likewise.

The traveling pedals (control levers) have the automatically direction changing function, ensuring the forward operation of the pedal makes the crane travel forward and vice versa in spite of the relative position of the upperworks to the lowerworks.

The accelerator pedal is to the right of the right traveling pedal.

For the Kawasaki system, the control lever of main hoisting winch/auxiliary hoisting winch/main luffing winch is located at the front of right armrest box. Switches like engine startup switch, working mode switch, accelerator rotary switch, function relief switch are all on the right armrest box. The control lever of auxiliary luffing winch/slewing, slewing/auxiliary luffing switch, slewing lock switch, indicator switch, and air conditioner operation panel are all on the left armrest box.

For the Rexroth system, the control lever of main / auxiliary hoisting winch is located at the front of right armrest box. Switches like engine startup switch, working mode switch, accelerator rotary switch, function relief switch are all on the right armrest box. The control lever of main/aux. luffing winch/slewing winch, slewing/auxiliary luffing switch, slewing lock switch, indicator switch, and air conditioner operation panel are all on the left armrest box.

The display for the load moment limiter is located to the left front of the operator, showing real-time information.



Alarm Display

When an error occurs, the alarm information will be displayed on the screen inside driver's cab. At the same time, the system send audio-visual alarm.

Information about wind speed, oil temperature, water temperature, oil level, oil pressure, working hours, servo pressure, and engine speed will also be displayed on the screen inside driver's cab. It will also sound an alarm under the condition that the A-frame is not completely hoisted under operating mode.

Lubrication System

The upperworks employ automatically-controlled central lubrication system, which reduces maintaining workload and ensures sufficient lubrication at movable parts.



Lowerworks



Traveling Drive

Independent traveling drive is provided in each crawler frame. The hydraulic traveling motor drives planetary gear reducer and achieves independent traveling through the drive roller.



Traveling Brake

The normally-closed (i.e. it's in braking status when the control pedal valve is not engaged) blade-type brake is built in reducer and can compensate automatically, no adjustment is necessary. When the control pedal valve is engaged, the brake is released and the crane travels.



Crawler Pad

The left and right crawler tracks consist of 138 crawler pads in total, with each one 1220mm(3'11") wide. Tension of crawler track can be adjusted through the use of hydraulic jack. Tension is maintained through the use of shim plates.



Chassis

The power pin connecting the crawler to the frame is driven by a hydraulic cylinder. The whole procedure is controlled through a remote control box, making safe and easy assembly, disassembly, and transportation. The chassis is a high strength welded frame structure.

The chassis is designed broad to improve the stability of the overall crane.

Standard central ballast is 24t (52,900lb) in total, consisting two 12t (26,500lb) central ballast blocks. The central ballast can achieve self-assembly/disassembly.



Traveling Speed

The variable displacement motor can realize two speed traveling.

Low speed: 0~0.51km/h(0~0.32 mph)

High speed: 0~1.04km/h(0~0.65 mph).



Operation Device



Boom

The main chord pipes are made of high-strength steel. The boom frame is a space lattice structure of welded steel pipes with constant section in the middle part and

Specifications

variable cross section on both ends. The tip and base sections of the boom frame are strengthened with steel plates.

Walkway all through the boom frame and working places uses high-strength nonmetal material to facilitate work and ensure stability of the overall crane.

Standard configuration of boom: 8m (26'3") boom base, 8.5m (27'11") boom tip, 3m (9'10") boom insert ×1, 6m (19'8") boom insert ×2, 12m (39'4") boom insert ×5.

Length of boom ranges from basic boom of 16.5m (54'2") to full extensional boom of 91.5m (300'2").

➤ Luffing Jib

The main chord pipes are made of high-strength steel. The jib frame is a space lattice structure of welded steel pipes with constant section in the middle part and variable cross section on both ends. The tip and base sections of the jib are strengthened with steel plates.

Luffing jib configuration: 6.5m(21'4") jib tip, 6.5m(21'4") jib base, 3m(9'10") jib insert ×2, 6m(19'8") jib insert ×1, and 12m(39'4") jib insert ×3.

Available luffing jib lengths: 22m (72'2"), 25m (82'), 31m (101'8"), 37m (121'5"), 43m (141'1"), 52m (170'7"), and 61m (200'2").

Booms allowed to install with luffing jib range from 22.5m (73'10") to 61.5m(201'9").

(Boom and jib configuration scheme see the Operating Manual.)

➤ Fixed Jib

The main chord pipes are made of high-strength steel. The jib frame is a space lattice structure of welded steel pipes with constant section in the middle part and variable cross section on both ends. The tip and base sections of the jib are strengthened with steel plates.

Fixed jib configuration: 5m(16'5") jib tip, 5m(16'5") jib base, 3m(9'10") jib insert ×1, and 6m(19'8") jib insert ×3, Available fixed jib lengths: 13m (42'8"), 19m (62'4"), 25m (82'), and 31m (101'8").

Booms allowed to install with fixed jib range from 28.5m (93'6") to 76.5m (251').

(Boom and jib configuration scheme see the Operating Manual.)

➤ Hook Blocks

13.5t (14.9USt) hook block (ball hook)

35t (38.6USt) hook block

80t (88USt) hook block

100t (110USt) hook block

150t (165USt) hook block

260t (286US) hook block

Note: the above-mentioned equipments are the complete

configurations. Actual configuration see the purchase contract.



Safety Devices



Load Moment Limiter

Standard configuration, several brands for option.

As an independent safety controlling system completely controlled by computer, the load moment limiter can detect parameters like weight of load, operating radius, and boom angle, and can also compare the rated parameters with the actual ones. In normal conditions, it can detect dangerous actions of the crane and cutoff these actions if necessary. In addition, it is equipped with a black box to record overload information.

Components: display, host machine, angle sensor, and force sensor.



Tri-color Load Alarming Light

It can indicate the load bearing condition of the crane according to load indicating bar on the display of load moment limiter.



Over-hoist Limit Device for Main and Auxiliary Hooks

When the hook is lifted to a certain height, the limit switch is activated with a buzzer on the control board sending an alarm to both electronic and hydraulic controls, and the hook lifting operation stops automatically.



Over Roll-out Limit Device for Main and Auxiliary Hooks

It can send a signal when the wire rope is rolled out with only three wraps left on the drum, and the hook lowering operation stops automatically.



Switch for Assembling Mode/ Operating Mode

The over-hoist limit device, over roll-out limit device, boom limits, and load moment limiter can be overridden in the assembling mode.

While under normal operating mode, all these safety devices are functioning.



Boom Limits Detecting Devices

The mechanical limits detecting device and load moment limiter boom angle limits detecting device ensure the boom or jib operate within safe angles.

Specifications

➤ Boom Back-stop Device

It can prevent the retroversion of the boom through hydraulic cylinder. When the boom moves forward, the hydraulic cylinder compensates high-pressure oil automatically to tension the boom pull rod, preventing the boom vibration or retroversion during operation.

A pair of back-stop hydraulic cylinders is installed at the back of the main strut of luffing jib, and a pair of oil-gas cylinders at the back of the jib struts to prevent the jib strut retroversion and tension the luffing hoist wire ropes. A mechanical back-stop device is activated to prevent the jib retroversion when jib offset angle reaches 13° .

➤ Winch Lock Device

All winches employ the normally-closed, blade-type, spring loaded brake, which features powerful brake, maintenance-free, safety, and long service life.

➤ Monitoring System

The operator can see the real-time situation of the luffing winches, hoisting winches, and rear of the crane through the high definition cameras.

➤ Fault Detecting System

It can provide information on faults automatically and send corresponding alarms. It can also display the working condition of electrical system and facilitate quick troubleshooting.

➤ Pharos

It is installed at the top of the boom system to send signal of height and hence allows the boom system to keep erecting at night.

➤ Anemometer

It is installed at the top of the boom system to detect real-time wind speed and can transmit the data the display at driver's cab.

➤ Gradienter

The mechanical gradienter is used as the benchmark and the electronic gradienter is used as real-time detector for indicating the inclining angle of the crane and prompting safety operation.

➤ Boom Angle Indicator

Pendulum-type angle indicator mounted at the side close to the driver's cab of the boom base.

➤ Hook Clamp

Each kind of lifting hook is equipped with a clamp plate used to prevent the hoisting wire rope from falling off.

➤ Operating Alarm

The operator can sound the horn to alert people around before any operation.

➤ Traveling/Slewing Alarm

The operating lamps are flickering and the buzzer is sounding during traveling and slewing.

➤ Functions Locking

If the function locking joystick is not in position or the operator is not at seat, all the other control levers are out of commission so as to prevent mis-operation.

➤ Automatic Direction Changing

It ensures that the forward operation of the pedal makes the crane travel forward and vice versa in spite of the relative position of the upperworks to the lowerworks.

➤ Engine Power Load Limit Adjustment and Stall Prevention

It adjust through the power load according to real-time detecting the engine output power, preventing the engine stall or speed-lost.

➤ Monitoring Display

The high definition and true color display is the display terminal of the overall crane electrical system, showing engine working parameters, hydraulic system working state and parameters, parameters of all detecting points and output points of electrical system, and real-time parameters of ambient operating conditions.

Key Words



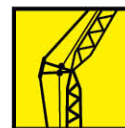
Operating radius
Radius (R)



Main boom (H)
Boom angle
Mixed main boom (HJ)
Light main boom (H_L)



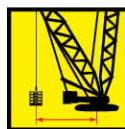
Fixed jib (FJ)
Fixed short jib (SF)
Light fixed short jib (SF_L)
Heavy fixed short jib (SF_H)



Luffing jib (LJ)



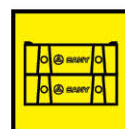
Superlift counterweight (B)
Superlift mast (D)



Superlift radius



Counterweight



Central ballast

Operating Condition Code:

H: Heavy main boom

H_L: Light main boom

HD (HDB): Heavy main boom + superlift mast (+ superlift counterweight)

HJ: Mixed main boom

HJD (HJDB): Mixed main boom + superlift mast (+ superlift counterweight)

FJ: Fixed jib

LJ: Luffing jib

LJD (LJDB): Luffing jib + superlift mast (+ superlift counterweight)

SF: Fixed short jib

SF_L: Light fixed short jib

SF_LD SF_LDB): Light fixed short jib + superlift mast (+ superlift counterweight)

SF_H: Heavy fixed short jib

SF_HD (SF_HDB): Heavy fixed short jib + superlift mast (+ superlift counterweight)

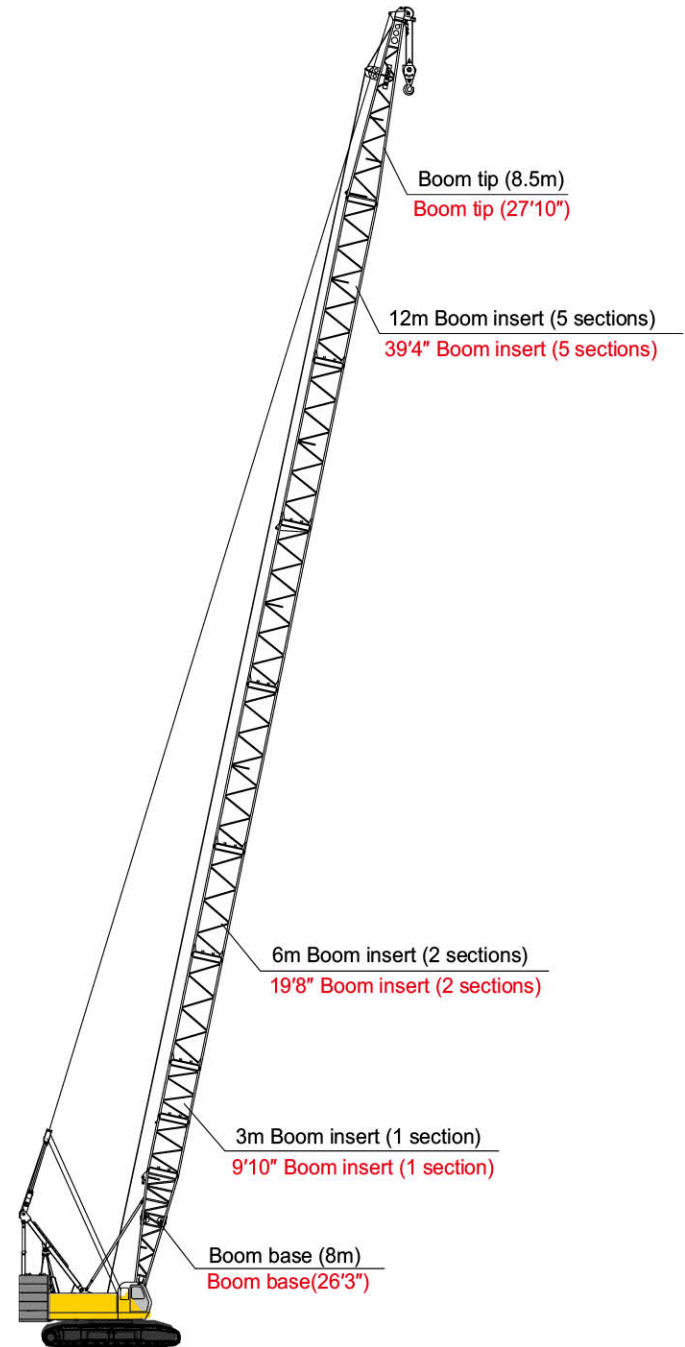
Note: These keywords are general terms. A specific product may not use all of them.

Combinations of Operating Conditions



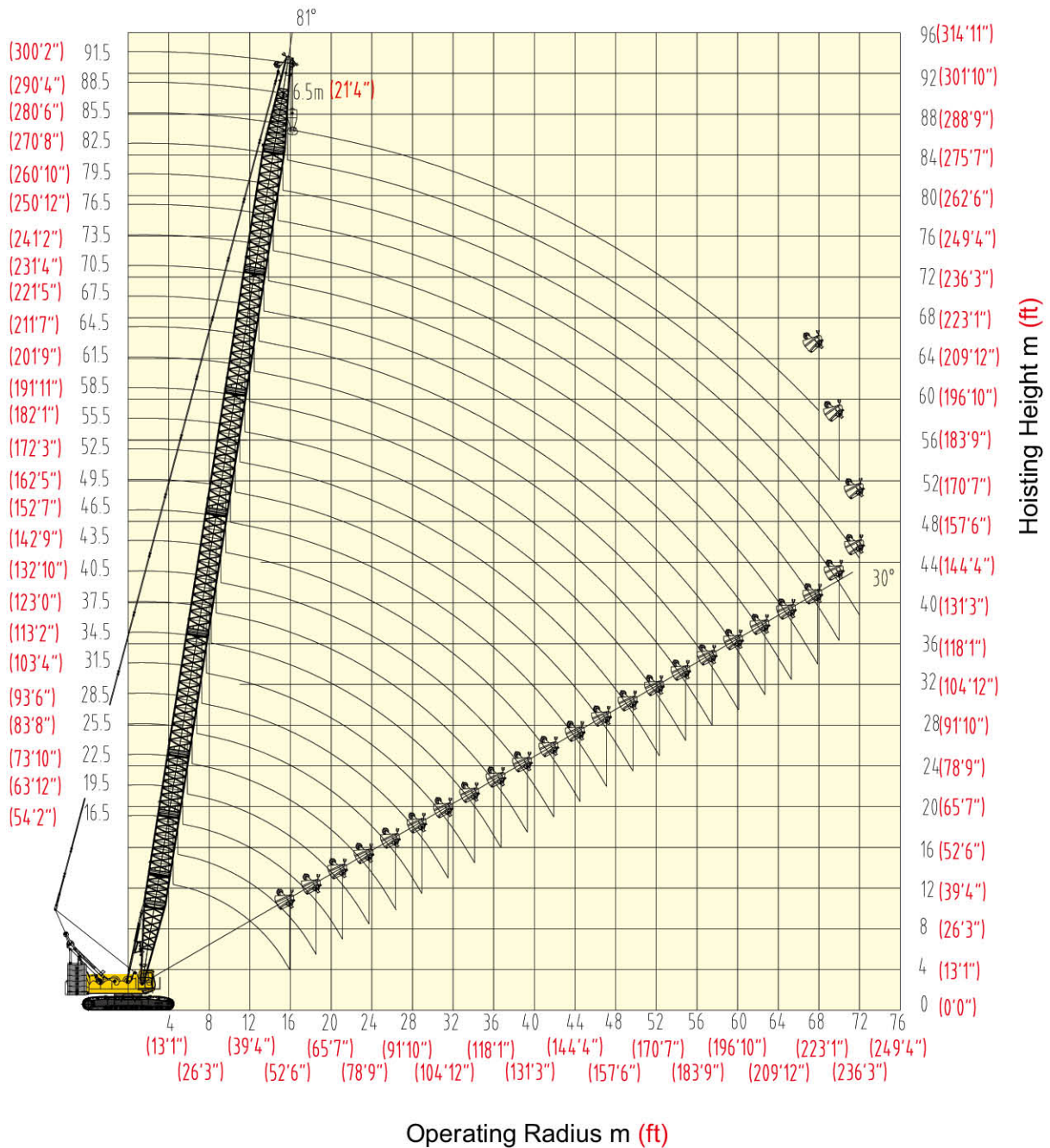
H Operating Condition/Combination of Boom

Boom Length (m)	Boom Insert		
	3 m (9'10")	6 m (19'8")	12 m (39'4")
16.5 (54'2")	-	-	-
19.5 (63'12")	1	-	-
22.5 (73'10")	-	1	-
25.5 (83'8")	1	1	-
28.5 (93'6")	-	-	1
31.5 (103'4")	1	-	1
34.5 (113'2")	-	1	1
37.5 (123')	1	1	1
40.5 (132'10")	-	-	2
43.5 (142'9")	1	-	2
46.5 (152'7")	-	1	2
49.5 (162'5")	1	1	2
52.5 (172'3")	-	-	3
55.5 (182'1")	1	-	3
58.5 (191'11")	-	1	3
61.5 (201'9")	1	1	3
64.5 (211'7")	-	-	4
67.5 (221'5")	1	-	4
70.5 (231'4")	-	1	4
73.5 (241'2")	1	1	4
76.5 (251')	-	-	5
79.5 (260'10")	1	-	5
82.5 (270'8")	-	1	5
85.5 (280'6")	1	1	5
88.5 (290'4")	-	2	5
91.5 (300'2")	1	2	5



Boom combinations 16.5m~91.5m (54'2"~300'2")

Operating Range Diagram of H Operating Condition



Hoisting Height and Operating Range Diagram

Load Charts of H Operating Condition

Load Charts of SCC2500C H Operating Condition								
(not including extension Jib, including standard counterweight and additional counterweight) kg(lb)×1000								
Radius (m)	Length of Main Boom (m) (ft)							
	16.5	19.5	22.5	25.5	28.5	31.5	34.5	37.5
(ft)	(54'2")	(63'12")	(73'10")	(83'8")	(93'6")	(103'4")	(113'2")	(123'0")
4 (13'1")	4.8/260 (15'9"/573)							
5 (16'5")	235.5 (519.1)	228.5 (503.7)	5.4/206.5 (17'9"/455)					
6 (19'8")	196.3 (432.7)	193.5 (426.5)	191.2 (421.5)	5.9/184.0 (19'4"/405)	6.6/175.5 (21'8"/386)			
7 (22'12")	168.9 (372.3)	168.2 (370.8)	167.2 (368.6)	166.6 (367.2)	165.7 (365.3)	7.1/155.5 (23'4"/342)	7.7/145.5 (25'3"/320)	
8 (26'3")	148.2 (326.7)	147.5 (325.1)	146.6 (323.1)	145.8 (321.4)	145.6 (320.9)	145.5 (320.7)	143.3 (315.9)	8.2/128.2 (26'11"/282)
9 (29'6")	132.5 (292.1)	131.6 (290.1)	130.2 (287)	129.9 (286.3)	128.9 (284.1)	128.3 (282.8)	127.8 (281.7)	125.6 (276.8)
10 (32'10")	120.5 (265.6)	119.7 (263.8)	117.8 (259.7)	116.9 (257.7)	116.4 (256.6)	116.1 (255.9)	115.8 (255.2)	112.1 (247.1)
12 (39'4")	94.6 (208.5)	94.6 (208.5)	94.5 (208.3)	94.5 (208.3)	94.4 (208.1)	94.3 (207.8)	93.7 (206.5)	93.4 (205.9)
14 (45'11")	75.9 (167.3)	75.9 (167.3)	75.8 (167.1)	75.8 (167.1)	75.7 (166.8)	75.7 (166.8)	75.6 (166.6)	75.5 (166.4)
16 (52'6")	15.9/53 (52'2"/116)	64.0 (141)	63.6 (140.2)	63.4 (139.7)	63.4 (139.7)	63.4 (139.7)	63.3 (139.5)	63.2 (139.3)
18 (59'1")		55.3 (121.9)	54.1 (119.2)	54.1 (119.2)	54.1 (119.2)	54.1 (119.2)	53.9 (118.8)	53.8 (118.6)
20 (65'7")		18.5/50.5 (60'8"/111)	47.4 (104.4)	47.2 (104)	47.1 (103.8)	46.9 (103.3)	46.7 (102.9)	46.6 (102.7)
22 (72'2")			21.1/41.2 (69'3"/90)	41.6 (91.7)	41.5 (91.4)	41.3 (91)	41.1 (90.6)	41.0 (90.3)
24 (78'9")				23.7/35.2 (77'9"/177)	36.9 (81.3)	36.7 (80.9)	36.5 (80.4)	36.4 (80.2)
26 (85'4")					33.6 (74)	33.0 (72.7)	32.8 (72.3)	32.7 (72)
28 (91'10")					26.3/31.8 (86'3"/70)	29.8 (65.6)	29.6 (65.2)	29.5 (65)
30 (98'5")						28.9/27.2 (94'10"/59)	26.9 (59.3)	26.9 (59.3)
32 (104'12")							31.5/23.8 (103'4"/52)	24.5 (54)
34 (111'7")								21.5 (47.3)
36 (118'1")								
Counter-weight	85.2 (187.8)	85.2 (187.8)	85.2 (187.8)	85.2 (187.8)	85.2 (187.8)	85.2 (187.8)	85.2 (187.8)	85.2 (187.8)

- Notes: 1. The actual lifting load is the value of the rated lifting load in the table deducted by the weights of the hook blocks, hangers and wire ropes reeving between the hook block and boom/jib head.
2. The rated lifting load in the charts is the value when the crane is hoisting load on level and hard ground and the load is slowly and steadily hoisted, and meanwhile the crane is not traveling.
3. Rated load is within 75% of tipping load.
4. Cells 40% grayed and italicized indicate that the operating condition is with both the standard counterweight and additional counterweight; and cells framed and grayed indicate that the lifting capacity depends on strength of boom system.

Load Charts of H Operating Condition

Load Charts of SCC2500C H Operating Condition							
(not including extension Jib, including standard counterweight and additional counterweight) kg(lb)×1000							
Radius (m)	Length of Main Boom (m) (ft)						
	40.5	43.5	46.5	49.5		52.5	
(ft)	(132'10")	(142'9")	(152'7")	(162'5")		(172'3")	
8	8.7/120.5 (26'3")						
9	118.5 (261.2)	9.2/108.8 (30'2"/239)	9.8/99.5 (32'2"/219)				
10	108.2 (238.5)	104.8 (231)	97.8 (215.6)	10.3/93.5 (33'10"/206)	10.3/93.5 (33'10"/206)	10.8/85.6 (35'5"/188)	10.8/85.6 (35'5"/188)
12	86.5 (190.6)	86.1 (189.8)	85.1 (187.6)	83 (182.9)	83 (182.9)	80.2 (176.8)	80.2 (176.8)
14	75.5 (166.4)	75.3 (166)	66.202 (145.9)	64.828 (142.8)	70.8 (156)	68.8 (151.6)	68.8 (151.6)
16	62.7 (138.2)	62.4 (137.5)	61.5 (135.5)	60.7 (133.8)	61.9 (136.4)	60.0 (132.2)	61.2 (134.9)
18	53.6 (59'1")	53.4 (117.7)	52.8 (116.4)	52.3 (115.3)	53.3 (117.5)	51.6 (113.7)	52.7 (116.1)
20	46.4 (65'7")	46.2 (101.8)	46.0 (101.4)	45.7 (100.7)	46.6 (102.7)	45.1 (99.4)	46.1 (101.6)
22	40.8 (72'2")	40.6 (89.5)	40.3 (88.8)	40.1 (88.4)	40.9 (90.1)	39.9 (87.9)	40.7 (89.7)
24	36.2 (78'9")	36.0 (79.3)	35.7 (78.7)	35.6 (78.4)	36.3 (80)	35.3 (77.8)	36.0 (79.3)
26	32.4 (85'4")	32.2 (70.9)	32.0 (70.5)	31.8 (70.1)	32.5 (71.6)	31.5 (69.4)	32.2 (70.9)
28	29.3 (91'10")	29.1 (64.1)	28.8 (63.4)	28.6 (63)	29.2 (64.3)	28.4 (62.6)	29.0 (63.9)
30	26.6 (98'5")	26.4 (58.2)	26.1 (57.5)	25.9 (57)	26.5 (58.4)	25.7 (56.6)	26.3 (57.9)
32	24.3 (104'12")	24.0 (52.9)	23.8 (52.4)	23.6 (52)	24.2 (53.3)	23.4 (51.5)	23.9 (52.6)
34	22.3 (111'7")	22.0 (48.5)	21.8 (48)	21.6 (47.6)	22.1 (48.7)	21.3 (46.9)	21.8 (48)
36	20.6 (118'1")	20.3 (44.7)	20.1 (44.3)	19.9 (43.8)	20.3 (44.7)	19.6 (43.2)	20.1 (44.3)
38	36.7/19.4 (124'8")	18.8 (41.4)	18.5 (40.7)	18.3 (40.3)	18.8 (41.4)	18.0 (39.6)	18.5 (40.7)
40		39.3/17.3 (128'11"/38)	17.1 (37.6)	16.9 (37.2)	17.3 (38.1)	16.6 (36.5)	17.1 (37.6)
42			41.9/15.5 (137'6"/34)	15.7 (34.6)	16.1 (35.4)	15.4 (33.9)	15.8 (34.8)
44				14.6 (32.1)	15.0 (33)	14.3 (31.5)	14.6 (32.1)
46				44.5/13.7 (145'12"/30)	44.5/14.6 (145'12"/32)	13.3 (29.3)	13.6 (29.9)
48						47.1/11.7 (154'6"/25)	47.1/12.5 (154'6"/27)
Counter-weight	85.2 (187.8)	85.2 (187.8)	85.2 (187.8)	85.2 (187.8)	85.2+5.8 (187.8+12.7)	85.2 (187.8)	85.2+5.8 (187.8+12.7)

- Notes:
1. The actual lifting load is the value of the rated lifting load in the table deducted by the weights of the hook blocks, hangers and wire ropes reeving between the hook block and boom/jib head.
 2. The rated lifting load in the charts is the value when the crane is hoisting load on level and hard ground and the load is slowly and steadily hoisted, and meanwhile the crane is not traveling.
 3. Rated load is within 75% of tipping load.
 4. Cells 40% grayed and italicized indicate that the operating condition is with both the standard counterweight and additional counterweight; and cells framed and grayed indicate that the lifting capacity depends on strength of boom system.

Load Charts of H Operating Condition

Load Charts of SCC2500C H Operating Condition								
(not including extension Jib, including standard counterweight and additional counterweight) kg(lb)×1000								
Radius (m) (ft)	Length of Main Boom (m) (ft)							
	55.5 (182'1")		58.5 (191'11")		61.5 (201'9")		64.5 (211'7")	
10 (32'10")	11.4/82.3 (37'5"/181)	11.4/82.3 (37'5"/181)	11.9/76.8 (39'0"/169)	11.9/76.8 (39'0"/169)				
12 (39'4")	76.5 (168.6)	76.5 (168.6)	75.2 (165.7)	75.2 (165.7)	12.4/69.1 (40'8"/152)	12.4/69.1 (40'8"/152)	12.9/67.8 (42'4"/149)	12.9/67.8 (42'4"/149)
14 (45'11")	68.3 (150.5)	68.3 (150.5)	63.8 (140.6)	63.8 (140.6)	61.2 (134.9)	61.2 (134.9)	59.2 (130.5)	59.2 (130.5)
16 (52'6")	59.3 (130.7)	60.5 (133.3)	57.8 (127.4)	57.8 (127.4)	56.6 (124.7)	56.6 (124.7)	54.9 (121)	54.9 (121)
18 (59'1")	51.1 (112.6)	52.1 (114.8)	50.5 (111.3)	51.5 (113.5)	50.0 (110.2)	51.1 (112.6)	49.4 (108.9)	50.5 (111.3)
20 (65'7")	44.6 (98.3)	45.5 (100.3)	44.1 (97.2)	45.0 (99.2)	43.7 (96.3)	44.6 (98.3)	43.2 (95.2)	44.1 (97.2)
22 (72'2")	39.5 (87)	40.3 (88.8)	38.9 (85.7)	39.7 (87.5)	38.6 (85)	39.4 (86.8)	38.1 (83.9)	38.9 (85.7)
24 (78'9")	35.1 (77.3)	35.8 (78.9)	34.7 (76.4)	35.5 (78.2)	34.4 (75.8)	35.2 (77.6)	33.9 (74.7)	34.7 (76.4)
26 (85'4")	31.3 (69)	32.0 (70.5)	31.1 (68.5)	31.7 (69.8)	30.9 (68.1)	31.6 (69.6)	30.5 (67.2)	31.1 (68.5)
28 (91'10")	28.2 (62.1)	28.8 (63.4)	27.9 (61.5)	28.5 (62.8)	27.8 (61.2)	28.4 (62.6)	27.5 (60.6)	28.1 (61.9)
30 (98'5")	25.5 (56.2)	26.1 (57.5)	25.2 (55.5)	25.7 (56.6)	25.0 (55.1)	25.6 (56.4)	24.8 (54.6)	25.3 (55.7)
32 (104'12")	23.1 (50.9)	23.7 (52.2)	22.8 (50.2)	23.3 (51.3)	22.7 (50)	23.3 (51.3)	22.4 (49.3)	23.0 (50.7)
34 (111'7")	21.1 (46.5)	21.6 (47.6)	20.8 (45.8)	21.3 (46.9)	20.7 (45.6)	21.2 (46.7)	20.4 (44.9)	20.9 (46)
36 (118'1")	19.4 (42.7)	19.8 (43.6)	19.0 (41.8)	19.5 (42.9)	18.9 (41.6)	19.4 (42.7)	18.6 (41)	19.1 (42.1)
38 (124'8")	17.8 (39.2)	18.2 (40.1)	17.5 (38.5)	17.9 (39.4)	17.4 (38.3)	17.8 (39.2)	17.1 (37.6)	17.5 (38.5)
40 (131'3")	16.4 (36.1)	16.8 (37)	16.1 (35.4)	16.5 (36.3)	16.0 (35.2)	16.4 (36.1)	15.7 (34.6)	16.1 (35.4)
42 (137'10")	15.2 (33.5)	15.6 (34.3)	14.8 (32.6)	15.2 (33.5)	14.7 (32.4)	15.1 (33.2)	14.4 (31.7)	14.8 (32.6)
44 (144'4")	14.1 (31)	14.4 (31.7)	13.7 (30.2)	14.1 (31)	13.6 (29.9)	14.0 (30.8)	13.3 (29.3)	13.7 (30.2)
46 (150'11")	13.1 (28.8)	13.4 (29.5)	12.7 (27.9)	13.1 (28.8)	12.6 (27.7)	12.9 (28.4)	12.3 (27.1)	12.6 (27.7)
48 (157'6")	12.1 (26.6)	12.4 (27.3)	11.8 (26)	12.1 (26.6)	11.6 (25.5)	12.0 (26.4)	11.3 (24.9)	11.7 (25.7)
50 (164'0")	49.7/10.8 (163'1"/23)	49.7/11.2 (163'1"/24)	11.0 (24.2)	11.3 (24.9)	10.8 (23.8)	11.1 (24.4)	10.5 (23.1)	10.8 (23.8)
52 (170'7")			10.3 (22.7)	10.3 (22.7)	10.0 (22)	10.3 (22.7)	9.7 (21.3)	10.0 (22)
54 (177'2")			52.3/9.1 (171'7"/20)	52.3/9.6 (171'7"/21)	9.3 (20.5)	9.6 (21.1)	8.9 (19.6)	9.3 (20.5)
56 (183'9")					54.9/8.1 (180'1"/17)	54.9/8.5 (180'1"/18)	8.3 (18.2)	8.6 (18.9)
58 (190'3")							57.5/7.2 (188'8"/15)	57.5/7.7 (188'8"/16)
Counter-weight	85.2 (187.8)	85.2+5.8 (187.8+12.7)	85.2 (187.8)	85.2+5.8 (187.8+12.7)	85.2 (187.8)	85.2+5.8 (187.8+12.7)	85.2 (187.8)	85.2+5.8 (187.8+12.7)

- Notes: 1. The actual lifting load is the value of the rated lifting load in the table deducted by the weights of the hook blocks, hangers and wire ropes reeving between the hook block and boom/jib head.
2. The rated lifting load in the charts is the value when the crane is hoisting load on level and hard ground and the load is slowly and steadily hoisted, and meanwhile the crane is not traveling.
3. Rated load is within 75% of tipping load.
4. Cells 40% grayed and italicized indicate that the operating condition is with both the standard counterweight and additional counterweight; and cells framed and grayed indicate that the lifting capacity depends on strength of boom system.

Load Charts of H Operating Condition

Load Charts of SCC2500C H Operating Condition								
(not including extension Jib, including standard counterweight and additional counterweight) kg(lb)×1000								
Radius (m)	Length of Main Boom (m) (ft)							
	67.5 (221'5")		70.5 (231'4")		73.5 (241'2")		76.5 (250'12")	
(ft)	13.5/63.9 (44'3"/140)	13.5/63.9 (44'3"/140)						
12 (39'4")	58.5 (128.9)	58.5 (128.9)	57.8 (127.4)	57.8 (127.4)	14.5/54.8 (47'7"/120)	14.5/54.8 (47'7"/120)	15.1/50.2 (49'6"/110)	15.1/50.2 (49'6"/110)
14 (45'11")	53.3 (117.5)	53.3 (117.5)	51.1 (112.6)	51.1 (112.6)	50.2 (110.6)	50.2 (110.6)	48.9 (107.8)	48.9 (107.8)
16 (52'6")	48.9 (107.8)	49.9 (110)	48.4 (106.7)	49.4 (108.9)	47.9 (105.6)	48.9 (107.8)	46.2 (101.8)	46.2 (101.8)
18 (59'1")	42.6 (93.9)	43.5 (95.9)	42.2 (93)	43.1 (95)	41.7 (91.9)	42.6 (93.9)	41.3 (91)	42.2 (93)
20 (65'7")	37.6 (82.8)	38.4 (84.6)	37.2 (82)	38.0 (83.7)	36.7 (80.9)	37.6 (82.8)	36.4 (80.2)	37.2 (82)
22 (72'2")	33.5 (73.8)	34.2 (75.3)	33.1 (72.9)	33.8 (74.5)	32.7 (72)	33.4 (73.6)	32.3 (71.2)	33.1 (72.9)
24 (78'9")	30.0 (66.1)	30.7 (67.6)	29.6 (65.2)	30.3 (66.7)	29.3 (64.5)	29.9 (65.9)	28.9 (63.7)	29.6 (65.2)
26 (85'4")	27.1 (59.7)	27.7 (61)	26.7 (58.8)	27.3 (60.1)	26.4 (58.2)	27.0 (59.5)	26.1 (57.5)	26.7 (58.8)
28 (91'10")	24.5 (54)	25.1 (55.3)	24.2 (53.3)	24.8 (54.6)	23.9 (52.6)	24.4 (53.7)	23.6 (52)	24.1 (53.1)
30 (98'5")	22.2 (48.9)	22.7 (50)	21.9 (48.2)	22.5 (49.6)	21.7 (47.8)	22.3 (49.1)	21.4 (47.1)	21.9 (48.2)
32 (104'12")	20.1 (44.3)	20.6 (45.4)	19.9 (43.8)	20.4 (44.9)	19.7 (43.4)	20.2 (44.5)	19.5 (42.9)	20.0 (44)
34 (111'7")	18.4 (40.5)	18.8 (41.4)	18.1 (39.9)	18.6 (41)	17.9 (39.4)	18.4 (40.5)	17.7 (39)	18.2 (40.1)
36 (118'1")	16.8 (37)	17.2 (37.9)	16.6 (36.5)	17.0 (37.4)	16.3 (35.9)	16.8 (37)	16.1 (35.4)	16.6 (36.5)
38 (124'8")	15.4 (33.9)	15.8 (34.8)	15.2 (33.5)	15.6 (34.3)	14.9 (32.8)	15.4 (33.9)	14.7 (32.4)	15.1 (33.2)
40 (131'3")	14.2 (31.3)	14.6 (32.1)	13.9 (30.6)	14.3 (31.5)	13.7 (30.2)	14.1 (31)	13.5 (29.7)	13.9 (30.6)
42 (137'10")	13.0 (28.6)	13.4 (29.5)	12.8 (28.2)	13.1 (28.8)	12.6 (27.7)	12.9 (28.4)	12.3 (27.1)	12.7 (27.9)
44 (144'4")	12.0 (26.4)	12.4 (27.3)	11.8 (26)	12.1 (26.6)	11.6 (25.5)	11.9 (26.2)	11.3 (24.9)	11.7 (25.7)
46 (150'11")	11.0 (24.2)	11.4 (25.1)	10.8 (23.8)	11.2 (24.6)	10.6 (23.3)	10.9 (24)	10.3 (22.7)	10.7 (23.5)
48 (157'6")	10.2 (22.4)	10.6 (23.3)	9.9 (21.8)	10.3 (22.7)	9.7 (21.3)	10.0 (22)	9.4 (20.7)	9.8 (21.6)
50 (164'0")	9.4 (20.7)	9.7 (21.3)	9.1 (20)	9.4 (20.7)	8.9 (19.6)	9.2 (20.2)	8.6 (18.9)	9.0 (19.8)
52 (170'7")	8.7 (19.1)	9.0 (19.8)	8.3 (18.2)	8.7 (19.1)	8.1 (17.8)	8.4 (18.5)	7.9 (17.4)	8.2 (18)
54 (177'2")	8.0 (17.6)	8.3 (18.2)	7.7 (16.9)	8.0 (17.6)	7.4 (16.3)	7.7 (16.9)	7.2 (15.8)	7.5 (16.5)
56 (183'9")	7.4 (16.3)	7.7 (16.9)	7.1 (15.6)	7.4 (16.3)	6.8 (14.9)	7.1 (15.6)	6.5 (14.3)	6.8 (14.9)
58 (190'3")	59.9/6.6 (196'6"/14)	59.9/6.8 (196'6"/14)	6.5 (14.3)	6.8 (14.9)	6.2 (13.6)	6.5 (14.3)	6.0 (13.2)	6.3 (13.8)
60 (196'10")			5.9 (13)	6.2 (13.6)	5.7 (12.5)	6.0 (13.2)	5.4 (11.9)	5.7 (12.5)
62 (203'5")			62.7/5.3 (205'8"/11)	62.7/5.9 (205'8"/13)	5.1 (11.2)	5.4 (11.9)	4.9 (10.8)	5.2 (11.4)
64 (209'12")					65.3/4.5 (214'3"/9)	65.3/4.9 (214'3"/10)	4.4 (9.7)	4.7 (10.3)
66 (216'6")								
68 (223'1")							67.9/3.6 (222'9"/7)	67.9/4.1 (222'9"/9)
Counter-weight	85.2 (187.8)	85.2+5.8 (187.8+12.7)	85.2 (187.8)	85.2+5.8 (187.8+12.7)	85.2 (187.8)	85.2+5.8 (187.8+12.7)	85.2 (187.8)	85.2+5.8 (187.8+12.7)

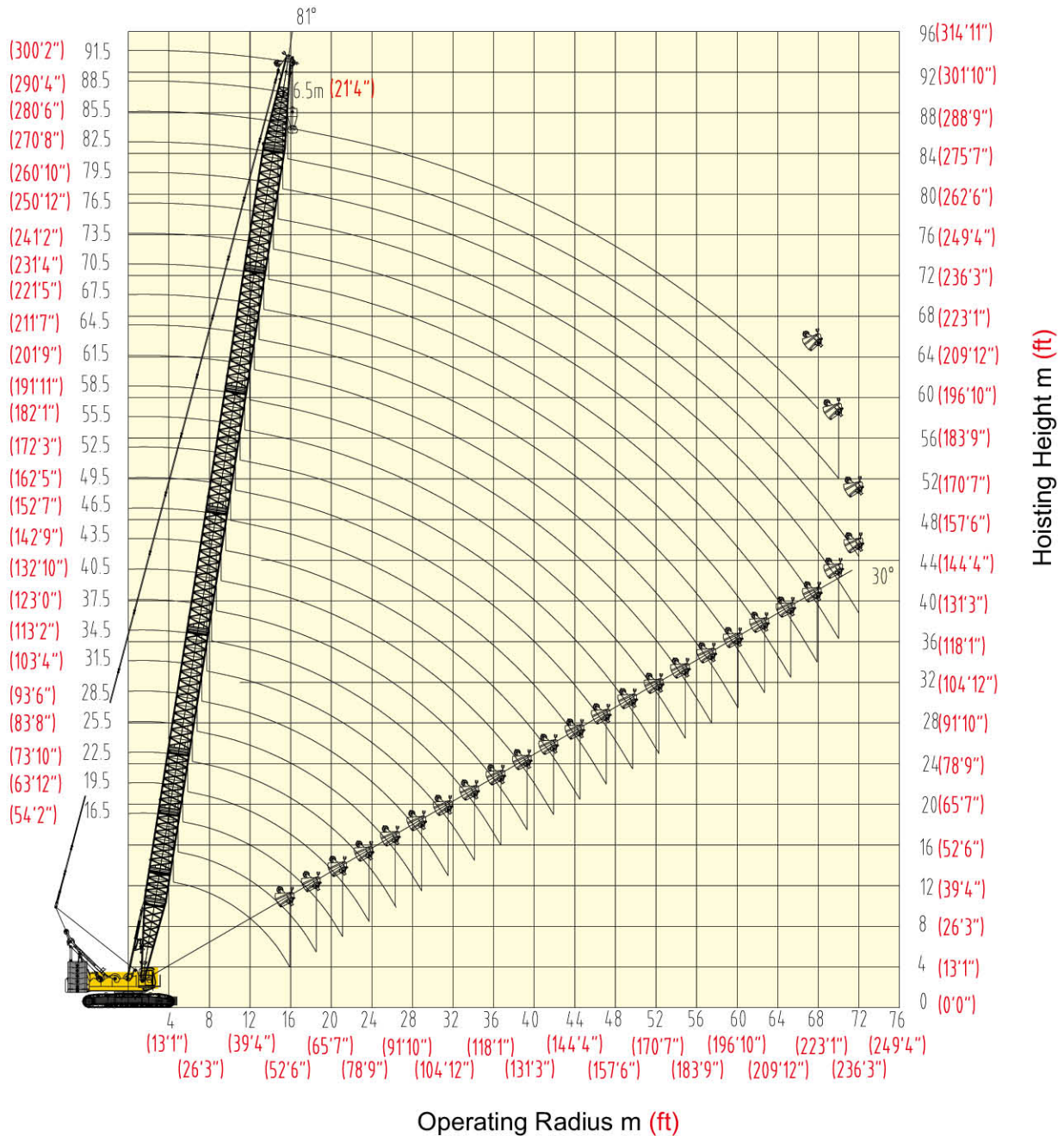
- Notes:
- The actual lifting load is the value of the rated lifting load in the table deducted by the weights of the hook blocks, hangers and wire ropes reeving between the hook block and boom/jib head.
 - The rated lifting load in the charts is the value when the crane is hoisting load on level and hard ground and the load is slowly and steadily hoisted, and meanwhile the crane is not traveling.
 - Rated load is within 75% of tipping load.
 - Cells 40% grayed and italicized indicate that the operating condition is with both the standard counterweight and additional counterweight; and cells framed and grayed indicate that the lifting capacity depends on strength of boom system.

Load Charts of H Operating Condition

Load Charts of SCC2500C H Operating Condition										
(not including extension Jib, including standard counterweight and additional counterweight) kg(lb)×1000										
Radius (m)	Length of Main Boom (m) (ft)									
	79.5 (260'10")		82.5 (270'8")		85.5 (280'6")		88.5 (290'4")		91.5 (300'2")	
(ft)	15.6/45.8 (51'2"/100)	15.6/45.8 (51'2"/100)								
14 (45'11")	15.6/45.8 (51'2"/100)	15.6/45.8 (51'2"/100)								
16 (52'6")	45.5 (100.3)	45.5 (100.3)	16.1/42.8 (52'10"/94)	16.1/42.8 (52'10"/94)	16.6/38.9 (54'6"/85)	16.6/38.9 (54'6"/85)	17.2/34.2 (56'5"/75)	17.2/34.2 (56'5"/75)	17.7/33.1 (58'1"/72)	17.7/33.1 (58'1"/72)
18 (59'1")	43.2 (95.2)	43.2 (95.2)	39.3 (86.6)	39.3 (86.6)	36.5 (80.4)	36.5 (80.4)	33.4 (73.6)	33.4 (73.6)	30.8 (67.9)	30.8 (67.9)
20 (65'7")	40.8 (89.9)	41.7 (91.9)	37.8 (83.3)	37.8 (83.3)	34.1 (75.1)	34.1 (75.1)	32.2 (70.9)	32.2 (70.9)	29.9 (65.9)	29.9 (65.9)
22 (72'2")	35.9 (79.1)	36.7 (80.9)	35.4 (78)	36.2 (79.8)	32.4 (71.4)	32.4 (71.4)	29.7 (65.4)	29.7 (65.4)	28.3 (62.3)	28.3 (62.3)
24 (78'9")	31.8 (70.1)	32.6 (71.8)	31.4 (69.2)	32.1 (70.7)	31.0 (68.3)	30.7 (67.6)	28.6 (63)	28.6 (63)	27.1 (59.7)	27.1 (59.7)
26 (85'4")	28.5 (62.8)	29.1 (64.1)	28.1 (61.9)	28.7 (63.2)	27.7 (61)	28.3 (62.3)	25.9 (57)	25.9 (57)	25.1 (55.3)	25.1 (55.3)
28 (91'10")	25.6 (56.4)	26.2 (57.7)	25.2 (55.5)	25.8 (56.8)	24.8 (54.6)	25.4 (55.9)	24.4 (53.7)	24.0 (52.9)	23.0 (50.7)	23.0 (50.7)
30 (98'5")	23.2 (51.1)	23.7 (52.2)	22.8 (50.2)	23.3 (51.3)	22.4 (49.3)	22.9 (50.4)	22.0 (48.5)	22.0 (49.6)	21.1 (46.5)	21.1 (46.5)
32 (104'12")	21.0 (46.2)	21.5 (47.3)	20.6 (45.4)	21.1 (46.5)	20.2 (44.5)	20.8 (45.8)	19.9 (43.8)	20.4 (44.9)	19.5 (42.9)	20.0 (44)
34 (111'7")	19.1 (42.1)	19.6 (43.2)	18.7 (41.2)	19.2 (42.3)	18.4 (40.5)	18.9 (41.6)	18.0 (39.6)	18.5 (40.7)	17.6 (38.8)	18.1 (39.9)
36 (118'1")	17.4 (38.3)	17.9 (39.4)	17.0 (37.4)	17.5 (38.5)	16.7 (36.8)	17.2 (37.9)	16.3 (35.9)	16.8 (37)	15.9 (35)	16.4 (36.1)
38 (124'8")	15.9 (35)	16.3 (35.9)	15.5 (34.1)	16.0 (35.2)	15.2 (33.5)	15.7 (34.6)	14.9 (32.8)	15.3 (33.7)	14.5 (31.9)	14.9 (32.8)
40 (131'3")	14.5 (31.9)	14.9 (32.8)	14.2 (31.3)	14.6 (32.1)	13.9 (30.6)	14.3 (31.5)	13.5 (29.7)	13.9 (30.6)	13.1 (28.8)	13.5 (29.7)
42 (137'10")	13.2 (29.1)	13.6 (29.9)	12.9 (28.4)	13.3 (29.3)	12.7 (27.9)	13.1 (28.8)	12.3 (27.1)	12.7 (27.9)	11.9 (26.2)	12.3 (27.1)
44 (144'4")	12.1 (26.6)	12.4 (27.3)	11.8 (26)	12.2 (26.8)	11.5 (25.3)	11.9 (26.3)	11.2 (24.6)	11.6 (25.5)	10.8 (23.8)	11.2 (24.6)
46 (150'11")	11.0 (24.2)	11.4 (25.1)	10.7 (23.5)	11.1 (24.4)	10.4 (22.9)	10.8 (23.8)	10.1 (22.2)	10.5 (23.1)	9.8 (21.6)	10.1 (22.2)
48 (157'6")	10.0 (22)	10.4 (22.9)	9.7 (21.3)	10.1 (22.2)	9.5 (20.9)	9.9 (21.8)	9.1 (20)	9.5 (20.9)	8.8 (19.4)	9.2 (20.2)
50 (164'0")	9.1 (20)	9.5 (20.9)	8.9 (19.6)	9.2 (20.2)	8.6 (18.9)	8.9 (19.6)	8.2 (18)	8.6 (18.9)	7.9 (17.4)	8.3 (18.2)
52 (170'7")	8.3 (18.2)	8.7 (19.1)	8.0 (17.6)	8.3 (18.2)	7.7 (16.9)	8.1 (17.8)	7.4 (16.3)	7.8 (17.1)	7.1 (15.6)	7.5 (16.5)
54 (177'2")	7.6 (16.7)	7.9 (17.4)	7.3 (16)	7.6 (16.7)	7.0 (15.4)	7.4 (16.3)	6.7 (14.7)	7.0 (15.4)	6.4 (14.1)	6.7 (14.7)
56 (183'9")	6.9 (15.2)	7.2 (15.8)	6.6 (14.5)	6.9 (15.2)	6.4 (14.1)	6.7 (14.7)	6.0 (13.2)	6.3 (13.8)	5.7 (12.5)	6.0 (13.2)
58 (190'3")	6.2 (13.6)	6.5 (14.3)	6.0 (13.2)	6.2 (13.6)	5.7 (12.5)	6.0 (13.2)	5.3 (11.6)	5.6 (12.3)	5.1 (11.2)	5.4 (11.9)
60 (196'10")	5.7 (12.5)	6.0 (13.2)	5.4 (11.9)	5.7 (12.5)	5.1 (11.2)	5.4 (11.9)	4.8 (10.5)	5.0 (11)	4.5 (9.9)	4.7 (10.3)
62 (203'5")	5.1 (11.2)	5.4 (11.9)	4.8 (10.5)	5.1 (11.2)	4.6 (10.1)	4.9 (10.5)	4.2 (9.2)	4.5 (9.9)	3.9 (8.5)	4.2 (9.2)
64 (209'12")	4.6 (10.1)	4.9 (10.8)	4.3 (9.4)	4.5 (9.9)	4.0 (8.8)	4.3 (9.4)	3.7 (8.1)	4.0 (8.8)	3.4 (7.4)	3.7 (8.1)
66 (216'6")	4.1 (9)	4.4 (9.7)	3.8 (8.3)	4.1 (9)	3.5 (7.7)	3.8 (8.3)	3.2 (7)	3.5 (7.7)	2.9 (6.3)	3.1 (6.8)
68 (223'1")	3.7 (8.1)	3.9 (8.5)	3.3 (7.2)	3.6 (7.9)	3.1 (6.8)	3.3 (7.2)	2.7 (5.9)	3.0 (6.6)	2.4 (5.2)	2.7 (5.9)
70 (229'8")	3.5 (7.7)	3.5 (7.7)	2.9 (6.3)	3.2 (7)	2.7 (5.9)	2.9 (6.3)	2.4 (5.2)	2.6 (5.7)		
72 (236'3")			2.5 (5.5)	2.8 (6.1)	2.3 (5)	2.5 (5.5)				
Counter-weight	85.2 (187.8)	85.2+5.8 (187.8+12.7)	85.2 (187.8)	85.2+5.8 (187.8+12.7)	85.2 (187.8)	85.2+5.8 (187.8+12.7)	85.2 (187.8)	85.2+5.8 (187.8+12.7)	85.2 (187.8)	85.2+5.8 (187.8+12.7)

- Notes: 1. The actual lifting load is the value of the rated lifting load in the table deducted by the weights of the hook blocks, hangers and wire ropes reeving between the hook block and boom/jib head.
2. The rated lifting load in the charts is the value when the crane is hoisting load on level and hard ground and the load is slowly and steadily hoisted, and meanwhile the crane is not traveling.
3. Rated load is within 75% of tipping load.
4. Cells 40% grayed and italicized indicate that the operating condition is with both the standard counterweight and additional counterweight; and cells framed and grayed indicate that the lifting capacity depends on strength of boom system.

Operating Range Diagram of HC Operating Condition



Hoisting Height and Operating Range Diagram

Load Charts of HC Operating Condition

Load Charts of SCC2500C HC Operating Condition										
(not including extension Jib, including standard counterweight and additional counterweight) kg(lb)×1000										
Radius (m)	Length of Main Boom (m) (ft)									
	16.5	19.5	22.5	25.5	28.5	31.5	34.5	37.5	40.5	43.5
(ft)	(54'2")	(63'12")	(73'10")	(83'8")	(93'6")	(103'4")	(113'2")	(123'0")	(132'10")	(142'9")
4 (13'1")	4.8/13.5 (15'9"/29)									
5 (16'5")	13.5 (29.7)	13.5 (29.7)	5.4/13.5 (17'9"/29)							
6 (19'8")	13.5 (29.7)	13.5 (29.7)	13.5 (29.7)	5.9/13.5 (19'4"/29)	6.6/13.5 (21'8"/29)					
7 (22'12")	13.5 (29.7)	13.5 (29.7)	13.5 (29.7)	13.5 (29.7)	13.5 (29.7)	7.1/13.5 (23'4"/29)	7.7/13.5 (25'3"/29)			
8 (26'3")	13.5 (29.7)	13.5 (29.7)	13.5 (29.7)	13.5 (29.7)	13.5 (29.7)	13.5 (29.7)	13.5 (29.7)	8.2/13.5 (26'11"/29)	8.7/13.5 (28'7"/29)	
9 (29'6")	13.5 (29.7)	13.5 (29.7)	13.5 (29.7)	13.5 (29.7)	13.5 (29.7)	13.5 (29.7)	13.5 (29.7)	13.5 (29.7)	13.5 (29.7)	9.2/13.5 (30'2"/29)
10 (32'10")	13.5 (29.7)	13.5 (29.7)	13.5 (29.7)	13.5 (29.7)	13.5 (29.7)	13.5 (29.7)	13.5 (29.7)	13.5 (29.7)	13.5 (29.7)	13.5 (29.7)
12 (39'4")	13.5 (29.7)	13.5 (29.7)	13.5 (29.7)	13.5 (29.7)	13.5 (29.7)	13.5 (29.7)	13.5 (29.7)	13.5 (29.7)	13.5 (29.7)	13.5 (29.7)
14 (45'11")	13.5 (29.7)	13.5 (29.7)	13.5 (29.7)	13.5 (29.7)	13.5 (29.7)	13.5 (29.7)	13.5 (29.7)	13.5 (29.7)	13.5 (29.7)	13.5 (29.7)
16 (52'6")	15.9/13.5 (52'2"/29)	13.5 (29.7)	13.5 (29.7)	13.5 (29.7)	13.5 (29.7)	13.5 (29.7)	13.5 (29.7)	13.5 (29.7)	13.5 (29.7)	13.5 (29.7)
18 (59'1")		13.5 (29.7)	13.5 (29.7)	13.5 (29.7)	13.5 (29.7)	13.5 (29.7)	13.5 (29.7)	13.5 (29.7)	13.5 (29.7)	13.5 (29.7)
20 (65'7")		18.5/13.5 (60'8"/29)	13.5 (29.7)	13.5 (29.7)	13.5 (29.7)	13.5 (29.7)	13.5 (29.7)	13.5 (29.7)	13.5 (29.7)	13.5 (29.7)
22 (72'2")			21.1/13.5 (69'3"/29)	13.5 (29.7)	13.5 (29.7)	13.5 (29.7)	13.5 (29.7)	13.5 (29.7)	13.5 (29.7)	13.5 (29.7)
24 (78'9")				23.7/13.5 (77'9"/29)	13.5 (29.7)	13.5 (29.7)	13.5 (29.7)	13.5 (29.7)	13.5 (29.7)	13.5 (29.7)
26 (85'4")					13.5 (29.7)	13.5 (29.7)	13.5 (29.7)	13.5 (29.7)	13.5 (29.7)	13.5 (29.7)
28 (91'10")					26.3/13.5 (86'3"/29)	13.5 (29.7)	13.5 (29.7)	13.5 (29.7)	13.5 (29.7)	13.5 (29.7)
30 (98'5")						28.9/13.5 (94'10"/29)	13.5 (29.7)	13.5 (29.7)	13.5 (29.7)	13.5 (29.7)
32 (104'12")							31.5/13.5 (103'4"/29)	13.5 (29.7)	13.5 (29.7)	13.5 (29.7)
34 (111'7")								13.5 (29.7)	13.5 (29.7)	13.5 (29.7)
36 (118'1")									13.5 (29.7)	13.5 (29.7)
38 (124'8")									36.7/13.5 (120'5"/29)	13.5 (29.7)
40 (131'3")										39.3/13.5 (128'11"/29)
Counter-weight	85.2 (187.8)	85.2 (187.8)	85.2 (187.8)	85.2 (187.8)	85.2 (187.8)	85.2 (187.8)	85.2 (187.8)	85.2 (187.8)	85.2 (187.8)	85.2 (187.8)

- Notes: 1. The actual lifting load is the value of the rated lifting load in the table deducted by the weights of the hook blocks, hangers and wire ropes reeving between the hook block and boom/jib head.
2. The rated lifting load in the charts is the value when the crane is hoisting load on level and hard ground and the load is slowly and steadily hoisted, and meanwhile the crane is not traveling.
3. Rated load is within 75% of tipping load.
4. Cells 40% grayed and italicized indicate that the operating condition is with both the standard counterweight and additional counterweight; and cells framed and grayed indicate that the lifting capacity depends on strength of boom system.

Load Charts of HC Operating Condition

Load Charts of SCC2500C HC Operating Condition									
(not including extension Jib, including standard counterweight and additional counterweight) kg(lb)×1000									
Radius (m)	Length of Main Boom (m) (ft)								
	46.5 (152'7")	49.5 (162'5")		52.5 (172'3")		55.5 (182'1")		58.5 (191'11")	
9 (29'6")	9.8/13.5 (32'2"/29)								
10 (32'10")	13.5 (29.7)	10.3/13.5 (33'10"/29)	10.3/13.5 (33'10"/29)	10.8/13.5 (35'5"/29)	10.8/13.5 (35'5"/29)	11.4/13.5 (37'5"/29)	11.4/13.5 (37'5"/29)	11.9/13.5 (39'0"/29)	11.9/13.5 (39'0"/29)
12 (39'4")	13.5 (29.7)	13.5 (29.7)	13.5 (29.7)	13.5 (29.7)	13.5 (29.7)	13.5 (29.7)	13.5 (29.7)	13.5 (29.7)	13.5 (29.7)
14 (45'11")	13.5 (29.7)	13.5 (29.7)	13.5 (29.7)	13.5 (29.7)	13.5 (29.7)	13.5 (29.7)	13.5 (29.7)	13.5 (29.7)	13.5 (29.7)
16 (52'6")	13.5 (29.7)	13.5 (29.7)	13.5 (29.7)	13.5 (29.7)	13.5 (29.7)	13.5 (29.7)	13.5 (29.7)	13.5 (29.7)	13.5 (29.7)
18 (59'1")	13.5 (29.7)	13.5 (29.7)	13.5 (29.7)	13.5 (29.7)	13.5 (29.7)	13.5 (29.7)	13.5 (29.7)	13.5 (29.7)	13.5 (29.7)
20 (65'7")	13.5 (29.7)	13.5 (29.7)	13.5 (29.7)	13.5 (29.7)	13.5 (29.7)	13.5 (29.7)	13.5 (29.7)	13.5 (29.7)	13.5 (29.7)
22 (72'2")	13.5 (29.7)	13.5 (29.7)	13.5 (29.7)	13.5 (29.7)	13.5 (29.7)	13.5 (29.7)	13.5 (29.7)	13.5 (29.7)	13.5 (29.7)
24 (78'9")	13.5 (29.7)	13.5 (29.7)	13.5 (29.7)	13.5 (29.7)	13.5 (29.7)	13.5 (29.7)	13.5 (29.7)	13.5 (29.7)	13.5 (29.7)
26 (85'4")	13.5 (29.7)	13.5 (29.7)	13.5 (29.7)	13.5 (29.7)	13.5 (29.7)	13.5 (29.7)	13.5 (29.7)	13.5 (29.7)	13.5 (29.7)
28 (91'10")	13.5 (29.7)	13.5 (29.7)	13.5 (29.7)	13.5 (29.7)	13.5 (29.7)	13.5 (29.7)	13.5 (29.7)	13.5 (29.7)	13.5 (29.7)
30 (98'5")	13.5 (29.7)	13.5 (29.7)	13.5 (29.7)	13.5 (29.7)	13.5 (29.7)	13.5 (29.7)	13.5 (29.7)	13.5 (29.7)	13.5 (29.7)
32 (104'12")	13.5 (29.7)	13.5 (29.7)	13.5 (29.7)	13.5 (29.7)	13.5 (29.7)	13.5 (29.7)	13.5 (29.7)	13.5 (29.7)	13.5 (29.7)
34 (111'7")	13.5 (29.7)	13.5 (29.7)	13.5 (29.7)	13.5 (29.7)	13.5 (29.7)	13.5 (29.7)	13.5 (29.7)	13.5 (29.7)	13.5 (29.7)
36 (118'1")	13.5 (29.7)	13.5 (29.7)	13.5 (29.7)	13.5 (29.7)	13.5 (29.7)	13.5 (29.7)	13.5 (29.7)	13.5 (29.7)	13.5 (29.7)
38 (124'8")	13.5 (29.7)	13.5 (29.7)	13.5 (29.7)	13.5 (29.7)	13.5 (29.7)	13.5 (29.7)	13.5 (29.7)	13.5 (29.7)	13.5 (29.7)
40 (131'3")	13.5 (29.7)	13.5 (29.7)	13.5 (29.7)	13.5 (29.7)	13.5 (29.7)	13.5 (29.7)	13.5 (29.7)	13.5 (29.7)	13.5 (29.7)
42 (137'10")	41.9/13.5 (137'6"/29)	13.5 (29.7)	13.5 (29.7)	13.5 (29.7)	13.5 (29.7)	13.5 (29.7)	13.5 (29.7)	13.5 (29.7)	13.5 (29.7)
44 (144'4")		13.5 (29.7)	13.5 (29.7)	13.5 (29.7)	13.5 (29.7)	13.5 (29.7)	13.5 (29.7)	13.2 (29.1)	13.5 (29.7)
46 (150'11")		44.5/13.5 (145'12"/29)	44.5/13.5 (145'12"/29)	12.8 (28.2)	13.1 (28.8)	12.6 (27.7)	12.9 (28.4)	12.2 (26.8)	12.6 (27.7)
48 (157'6")				47.1/11.7 (154'6"/25)	47.1/12 (154'6"/26)	11.6 (25.5)	11.9 (26.2)	11.3 (24.9)	11.6 (25.5)
50 (164'0")						49.7/10.8 (163'1"/23)	49.7/10.7 (163'1"/23)	10.5 (23.1)	10.8 (23.8)
52 (170'7")								9.8 (21.6)	9.8 (21.6)
54 (177'2")								52.3/9.1 (171'7"/20)	52.3/9.1 (171'7"/20)
Counter-weight	85.2 (187.8)	85.2 (187.8)	85.2+5.8 (187.8+12.7)	85.2 (187.8)	85.2+5.8 (187.8+12.7)	85.2 (187.8)	85.2+5.8 (187.8+12.7)	85.2 (187.8)	85.2+5.8 (187.8+12.7)

- Notes: 1. The actual lifting load is the value of the rated lifting load in the table deducted by the weights of the hook blocks, hangers and wire ropes reeving between the hook block and boom/jib head.
2. The rated lifting load in the charts is the value when the crane is hoisting load on level and hard ground and the load is slowly and steadily hoisted, and meanwhile the crane is not traveling.
3. Rated load is within 75% of tipping load.
4. Cells 40% grayed and italicized indicate that the operating condition is with both the standard counterweight and additional counterweight; and cells framed and grayed indicate that the lifting capacity depends on strength of boom system.

Load Charts of HC Operating Condition

Load Charts of SCC2500C HC Operating Condition										
(not including extension Jib, including standard counterweight and additional counterweight) kg(lb)×1000										
Radius (m)	Length of Main Boom (m) (ft)									
	61.5 (201'9")		64.5 (211'7")		67.5 (221'5")		70.5 (231'4")		73.5 (241'2")	
12 (39'4")	12.4/13.5 (40'8"/29)	12.4/13.5 (40'8"/29)	12.9/13.5 (42'4"/29)	12.9/13.5 (42'4"/29)	13.5/13.5 (44'3"/29)	13.5/13.5 (44'3"/29)				
14 (45'11")	13.5 (29.7)	13.5 (29.7)	13.5 (29.7)	13.5 (29.7)	13.5 (29.7)	13.5 (29.7)	13.5 (29.7)	13.5 (29.7)	14.5/13.5 (47'7"/29)	14.5/13.5 (47'7"/29)
16 (52'6")	13.5 (29.7)	13.5 (29.7)	13.5 (29.7)	13.5 (29.7)	13.5 (29.7)	13.5 (29.7)	13.5 (29.7)	13.5 (29.7)	13.5 (29.7)	13.5 (29.7)
18 (59'1")	13.5 (29.7)	13.5 (29.7)	13.5 (29.7)	13.5 (29.7)	13.5 (29.7)	13.5 (29.7)	13.5 (29.7)	13.5 (29.7)	13.5 (29.7)	13.5 (29.7)
20 (65'7")	13.5 (29.7)	13.5 (29.7)	13.5 (29.7)	13.5 (29.7)	13.5 (29.7)	13.5 (29.7)	13.5 (29.7)	13.5 (29.7)	13.5 (29.7)	13.5 (29.7)
22 (72'2")	13.5 (29.7)	13.5 (29.7)	13.5 (29.7)	13.5 (29.7)	13.5 (29.7)	13.5 (29.7)	13.5 (29.7)	13.5 (29.7)	13.5 (29.7)	13.5 (29.7)
24 (78'9")	13.5 (29.7)	13.5 (29.7)	13.5 (29.7)	13.5 (29.7)	13.5 (29.7)	13.5 (29.7)	13.5 (29.7)	13.5 (29.7)	13.5 (29.7)	13.5 (29.7)
26 (85'4")	13.5 (29.7)	13.5 (29.7)	13.5 (29.7)	13.5 (29.7)	13.5 (29.7)	13.5 (29.7)	13.5 (29.7)	13.5 (29.7)	13.5 (29.7)	13.5 (29.7)
28 (91'10")	13.5 (29.7)	13.5 (29.7)	13.5 (29.7)	13.5 (29.7)	13.5 (29.7)	13.5 (29.7)	13.5 (29.7)	13.5 (29.7)	13.5 (29.7)	13.5 (29.7)
30 (98'5")	13.5 (29.7)	13.5 (29.7)	13.5 (29.7)	13.5 (29.7)	13.5 (29.7)	13.5 (29.7)	13.5 (29.7)	13.5 (29.7)	13.5 (29.7)	13.5 (29.7)
32 (104'12")	13.5 (29.7)	13.5 (29.7)	13.5 (29.7)	13.5 (29.7)	13.5 (29.7)	13.5 (29.7)	13.5 (29.7)	13.5 (29.7)	13.5 (29.7)	13.5 (29.7)
34 (111'7")	13.5 (29.7)	13.5 (29.7)	13.5 (29.7)	13.5 (29.7)	13.5 (29.7)	13.5 (29.7)	13.5 (29.7)	13.5 (29.7)	13.5 (29.7)	13.5 (29.7)
36 (118'1")	13.5 (29.7)	13.5 (29.7)	13.5 (29.7)	13.5 (29.7)	13.5 (29.7)	13.5 (29.7)	13.5 (29.7)	13.5 (29.7)	13.5 (29.7)	13.5 (29.7)
38 (124'8")	13.5 (29.7)	13.5 (29.7)	13.5 (29.7)	13.5 (29.7)	13.5 (29.7)	13.5 (29.7)	13.5 (29.7)	13.5 (29.7)	13.5 (29.7)	13.5 (29.7)
40 (131'3")	13.5 (29.7)	13.5 (29.7)	13.5 (29.7)	13.5 (29.7)	13.5 (29.7)	13.5 (29.7)	13.5 (29.7)	13.5 (29.7)	13.5 (29.7)	13.5 (29.7)
42 (137'10")	13.5 (29.7)	13.5 (29.7)	13.5 (29.7)	13.5 (29.7)	13.5 (29.7)	13.5 (29.7)	13.4 (29.5)	13.5 (29.7)	13.2 (29.1)	13.5 (29.7)
44 (144'4")	13.1 (28.8)	13.5 (29.7)	12.8 (28.2)	13.2 (29.1)	12.5 (27.5)	12.9 (28.4)	12.3 (27.1)	12.6 (27.7)	12.1 (26.6)	12.4 (27.3)
46 (150'11")	12.1 (26.6)	12.4 (27.3)	11.8 (26)	12.1 (26.6)	11.5 (25.3)	11.9 (26.2)	11.3 (24.9)	11.6 (25.5)	11.1 (24.4)	11.4 (25.1)
48 (157'6")	11.1 (24.4)	11.5 (25.3)	10.8 (23.8)	11.2 (24.6)	10.5 (23.1)	10.9 (24)	10.3 (22.7)	10.7 (23.5)	10.1 (22.2)	10.4 (22.9)
50 (164'0")	10.3 (22.7)	10.6 (23.3)	10.0 (22)	10.3 (22.7)	9.7 (21.3)	10.1 (22.2)	9.4 (20.7)	9.8 (21.6)	9.2 (20.2)	9.5 (20.9)
52 (170'7")	9.5 (20.9)	9.8 (21.6)	9.2 (20.2)	9.5 (20.9)	8.9 (19.6)	9.2 (20.2)	8.6 (18.9)	8.9 (19.6)	8.4 (18.5)	8.7 (19.1)
54 (177'2")	8.8 (19.4)	9.1 (20)	8.4 (18.5)	8.8 (19.4)	8.2 (18)	8.5 (18.7)	7.8 (17.1)	8.2 (18)	7.6 (16.7)	7.9 (17.4)
56 (183'9")	54.9/8.1 (180'1"/17)	54.9/8 (180'1"/17)	7.8 (17.1)	8.1 (17.8)	7.5 (16.5)	7.8 (17.1)	7.2 (15.8)	7.5 (16.5)	6.9 (15.2)	7.2 (15.8)
58 (190'3")			57.5/7.2 (188'8"/15)	57.5/7.2 (188'8"/15)	6.9 (15.2)	7.2 (15.8)	6.6 (14.5)	6.9 (15.2)	6.3 (13.8)	6.6 (14.5)
60 (196'10")					59.9/6.6 (196'6"/14)	59.9/6.3 (196'6"/13)	6.0 (13.2)	6.3 (13.8)	5.7 (12.5)	6.0 (13.2)
62 (203'5")							5.4 (11.9)	5.7 (12.5)	5.2 (11.4)	5.5 (12.1)
64 (209'12")							62.7/5.3 (205'8"/11)	62.7/5.4 (205'8"/11)	4.6 (10.1)	4.9 (10.8)
66 (216'6")									65.3/4.5 (214'3"/9)	65.3/4.4 (214'3"/9)
Counter-weight	85.2 (187.8)	85.2+5.8 (187.8+12.7)	85.2 (187.8)	85.2+5.8 (187.8+12.7)	85.2 (187.8)	85.2+5.8 (187.8+12.7)	85.2 (187.8)	85.2+5.8 (187.8+12.7)	85.2 (187.8)	85.2+5.8 (187.8+12.7)

- Notes: 1. The actual lifting load is the value of the rated lifting load in the table deducted by the weights of the hook blocks, hangers and wire ropes reeving between the hook block and boom/jib head.
2. The rated lifting load in the charts is the value when the crane is hoisting load on level and hard ground and the load is slowly and steadily hoisted, and meanwhile the crane is not traveling.
3. Rated load is within 75% of tipping load.
4. Cells 40% and italicized indicate that the operating condition is with both the standard counterweight and additional counterweight; and cells framed and grayed indicate that the lifting capacity depends on strength of boom system.

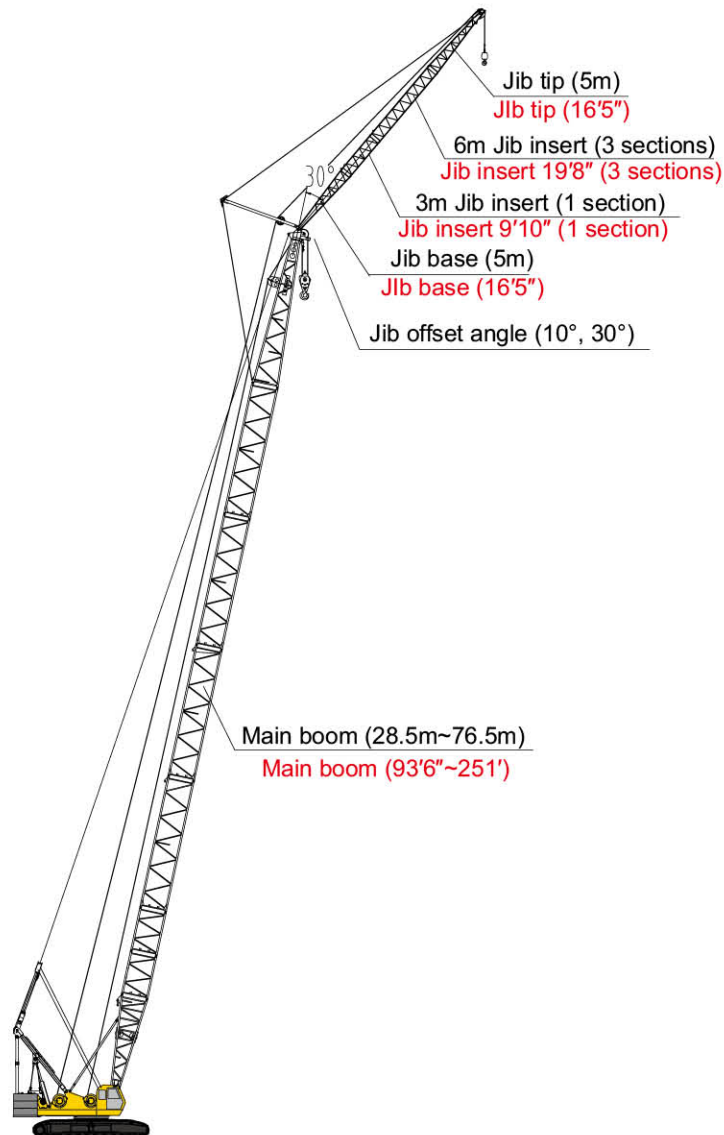
Load Charts of HC Operating Condition

Load Charts of SCC2500C HC Operating Condition												
(not including extension Jib, including standard counterweight and additional counterweight) kg(lb)×1000												
Radius (m)	Length of Main Boom (m) (ft)											
	76.5 (250'12")		79.5 (260'10")		82.5 (270'8")		85.5 (280'6")		88.5 (290'4")		91.5 (300'2")	
(ft)	15.1/13.5 (49'6"/29)	15.1/13.5 (49'6"/29)	15.6/13.5 (51'2"/29)	15.6/13.5 (51'2"/29)	16.1/13.5 (52'10"/29)	16.1/13.5 (52'10"/29)	16.6/13.5 (54'6"/29)	16.6/13.5 (54'6"/29)	17.2/13.5 (56'5"/29)	17.2/13.5 (56'5"/29)	17.7/13.5 (58'1"/29)	17.7/13.5 (58'1"/29)
14 (45'11")												
16 (52'6")	13.5 (29.7)	13.5 (29.7)	13.5 (29.7)	13.5 (29.7)	13.5 (29.7)	13.5 (29.7)	13.5 (29.7)	13.5 (29.7)	13.5 (29.7)	13.5 (29.7)	13.5 (29.7)	13.5 (29.7)
18 (59'1")	13.5 (29.7)	13.5 (29.7)	13.5 (29.7)	13.5 (29.7)	13.5 (29.7)	13.5 (29.7)	13.5 (29.7)	13.5 (29.7)	13.5 (29.7)	13.5 (29.7)	13.5 (29.7)	13.5 (29.7)
20 (65'7")	13.5 (29.7)	13.5 (29.7)	13.5 (29.7)	13.5 (29.7)	13.5 (29.7)	13.5 (29.7)	13.5 (29.7)	13.5 (29.7)	13.5 (29.7)	13.5 (29.7)	13.5 (29.7)	13.5 (29.7)
22 (72'2")	13.5 (29.7)	13.5 (29.7)	13.5 (29.7)	13.5 (29.7)	13.5 (29.7)	13.5 (29.7)	13.5 (29.7)	13.5 (29.7)	13.5 (29.7)	13.5 (29.7)	13.5 (29.7)	13.5 (29.7)
24 (78'9")	13.5 (29.7)	13.5 (29.7)	13.5 (29.7)	13.5 (29.7)	13.5 (29.7)	13.5 (29.7)	13.5 (29.7)	13.5 (29.7)	13.5 (29.7)	13.5 (29.7)	13.5 (29.7)	13.5 (29.7)
26 (85'4")	13.5 (29.7)	13.5 (29.7)	13.5 (29.7)	13.5 (29.7)	13.5 (29.7)	13.5 (29.7)	13.5 (29.7)	13.5 (29.7)	13.5 (29.7)	13.5 (29.7)	13.5 (29.7)	13.5 (29.7)
28 (91'10")	13.5 (29.7)	13.5 (29.7)	13.5 (29.7)	13.5 (29.7)	13.5 (29.7)	13.5 (29.7)	13.5 (29.7)	13.5 (29.7)	13.5 (29.7)	13.5 (29.7)	13.5 (29.7)	13.5 (29.7)
30 (98'5")	13.5 (29.7)	13.5 (29.7)	13.5 (29.7)	13.5 (29.7)	13.5 (29.7)	13.5 (29.7)	13.5 (29.7)	13.5 (29.7)	13.5 (29.7)	13.5 (29.7)	13.5 (29.7)	13.5 (29.7)
32 (104'12")	13.5 (29.7)	13.5 (29.7)	13.5 (29.7)	13.5 (29.7)	13.5 (29.7)	13.5 (29.7)	13.5 (29.7)	13.5 (29.7)	13.5 (29.7)	13.5 (29.7)	13.5 (29.7)	13.5 (29.7)
34 (111'7")	13.5 (29.7)	13.5 (29.7)	13.5 (29.7)	13.5 (29.7)	13.5 (29.7)	13.5 (29.7)	13.5 (29.7)	13.5 (29.7)	13.5 (29.7)	13.5 (29.7)	13.5 (29.7)	13.5 (29.7)
36 (118'1")	13.5 (29.7)	13.5 (29.7)	13.5 (29.7)	13.5 (29.7)	13.5 (29.7)	13.5 (29.7)	13.5 (29.7)	13.5 (29.7)	13.5 (29.7)	13.5 (29.7)	13.5 (29.7)	13.5 (29.7)
38 (124'8")	13.5 (29.7)	13.5 (29.7)	13.5 (29.7)	13.5 (29.7)	13.5 (29.7)	13.5 (29.7)	13.5 (29.7)	13.5 (29.7)	13.5 (29.7)	13.5 (29.7)	13.5 (29.7)	13.5 (29.7)
40 (131'3")	13.5 (29.7)	13.5 (29.7)	13.5 (29.7)	13.5 (29.7)	13.5 (29.7)	13.5 (29.7)	13.4 (29.5)	13.5 (29.7)	13.0 (28.6)	13.4 (29.5)	12.6 (27.7)	13.0 (28.6)
42 (137'10")	13.0 (28.6)	13.4 (29.5)	12.7 (27.9)	13.1 (28.8)	12.4 (27.3)	12.8 (28.2)	12.2 (26.8)	12.6 (27.7)	11.8 (26)	12.2 (26.8)	11.4 (25.1)	11.8 (26)
44 (144'4")	11.8 (26)	12.2 (26.8)	11.6 (25.5)	11.9 (26.2)	11.3 (24.9)	11.7 (25.7)	11.0 (24.2)	11.4 (25.1)	10.7 (23.5)	11.1 (24.4)	10.3 (22.7)	10.7 (23.5)
46 (150'11")	10.8 (23.8)	11.2 (24.6)	10.5 (23.1)	10.9 (24)	10.2 (22.4)	10.6 (23.3)	9.9 (21.8)	10.3 (22.7)	9.6 (21.1)	10.0 (22)	9.3 (20.5)	9.6 (21.1)
48 (157'6")	9.8 (21.6)	10.2 (22.4)	9.5 (20.9)	9.9 (21.8)	9.2 (20.2)	9.6 (21.1)	9.0 (19.8)	9.4 (20.7)	8.6 (18.9)	9.0 (19.8)	8.3 (18.2)	8.7 (19.1)
50 (164'0")	8.9 (19.6)	9.3 (20.5)	8.6 (18.9)	9.0 (19.8)	8.4 (18.5)	8.7 (19.1)	8.1 (17.8)	8.4 (18.5)	7.7 (16.9)	8.1 (17.8)	7.4 (16.3)	7.8 (17.1)
52 (170'7")	8.1 (17.8)	8.5 (18.7)	7.8 (17.1)	8.2 (18)	7.5 (16.5)	7.8 (17.1)	7.2 (15.8)	7.6 (16.7)	6.9 (15.2)	7.3 (16)	6.6 (14.5)	7.0 (15.4)
54 (177'2")	7.4 (16.3)	7.7 (16.9)	7.1 (15.6)	7.4 (16.3)	6.8 (14.9)	7.1 (15.6)	6.5 (14.3)	6.9 (15.2)	6.2 (13.6)	6.5 (14.3)	5.9 (13)	6.2 (13.6)
56 (183'9")	6.7 (14.7)	7.0 (15.4)	6.4 (14.1)	6.7 (14.7)	6.1 (13.4)	6.4 (14.1)	5.9 (13)	6.2 (13.6)	5.5 (12.1)	5.8 (12.1)	5.2 (11.4)	5.5 (12.1)
58 (190'3")	6.0 (13.2)	6.3 (13.8)	5.7 (12.5)	6.0 (13.2)	5.5 (12.1)	5.7 (12.5)	5.2 (11.4)	5.5 (12.1)	4.8 (10.5)	5.1 (11.2)	4.6 (10.1)	4.9 (10.8)
60 (196'10")	5.5 (12.1)	5.8 (12.7)	5.2 (11.4)	5.5 (12.1)	4.9 (10.8)	5.2 (11.4)	4.6 (10.1)	4.9 (10.8)	4.3 (9.4)	4.5 (9.9)	4.0 (8.8)	4.2 (9.2)
62 (203'5")	4.9 (10.8)	5.2 (11.4)	4.6 (10.1)	4.9 (10.8)	4.3 (9.4)	4.6 (10.1)	4.1 (9)	4.3 (9.4)	3.7 (8.1)	4.0 (8.8)	3.4 (7.4)	3.7 (8.1)
64 (209'12")	4.4 (9.7)	4.7 (10.3)	4.1 (9)	4.4 (9.7)	3.8 (8.3)	4.0 (8.8)	3.5 (7.7)	3.8 (8.3)	3.2 (7)	3.5 (7.7)	2.9 (6.3)	3.2 (7)
66 (216'6")	3.9 (8.5)	4.2 (9.2)	3.6 (7.9)	3.9 (8.5)	3.3 (7.2)	3.6 (7.9)	3.0 (6.6)	3.3 (7.2)	2.7 (5.9)	3.0 (6.6)	2.4 (5.2)	2.6 (5.7)
68 (223'1")	67.9/3.6 (222'9"/7)	67.9/3.6 (222'9"/7)	3.2 (7)	3.4 (7.4)	2.8 (6.1)	3.1 (6.8)	2.6 (5.7)	2.8 (6.1)	2.2 (4.8)	2.5 (5.5)	1.9 (4.1)	2.2 (4.8)
70 (229'8")			3.0 (6.6)	3.0 (6.6)	2.4 (5.2)	2.7 (5.9)	2.2 (4.8)	2.4 (5.2)	1.9 (4.1)	2.1 (4.6)		
72 (236'3")					2.0 (4.4)	2.3 (5)	1.8 (3.9)	2.0 (4.4)				
Counter-weight	85.2 (187.8)	85.2+5.8 (187.8+12.7)	85.2 (187.8)	85.2+5.8 (187.8+12.7)	85.2 (187.8)	85.2+5.8 (187.8+12.7)	85.2 (187.8)	85.2+5.8 (187.8+12.7)	85.2 (187.8)	85.2+5.8 (187.8+12.7)	85.2 (187.8)	85.2+5.8 (187.8+12.7)

- Notes:
- The actual lifting load is the value of the rated lifting load in the table deducted by the weights of the hook blocks, hangers and wire ropes reeving between the hook block and boom/jib head.
 - The rated lifting load in the charts is the value when the crane is hoisting load on level and hard ground and the load is slowly and steadily hoisted, and meanwhile the crane is not traveling.
 - Rated load is within 75% of tipping load.
 - Cells 40% grayed and italicized indicate that the operating condition is with both the standard counterweight and additional counterweight; and cells framed and grayed indicate that the lifting capacity depends on strength of boom system.

Combination of Fixed Jib

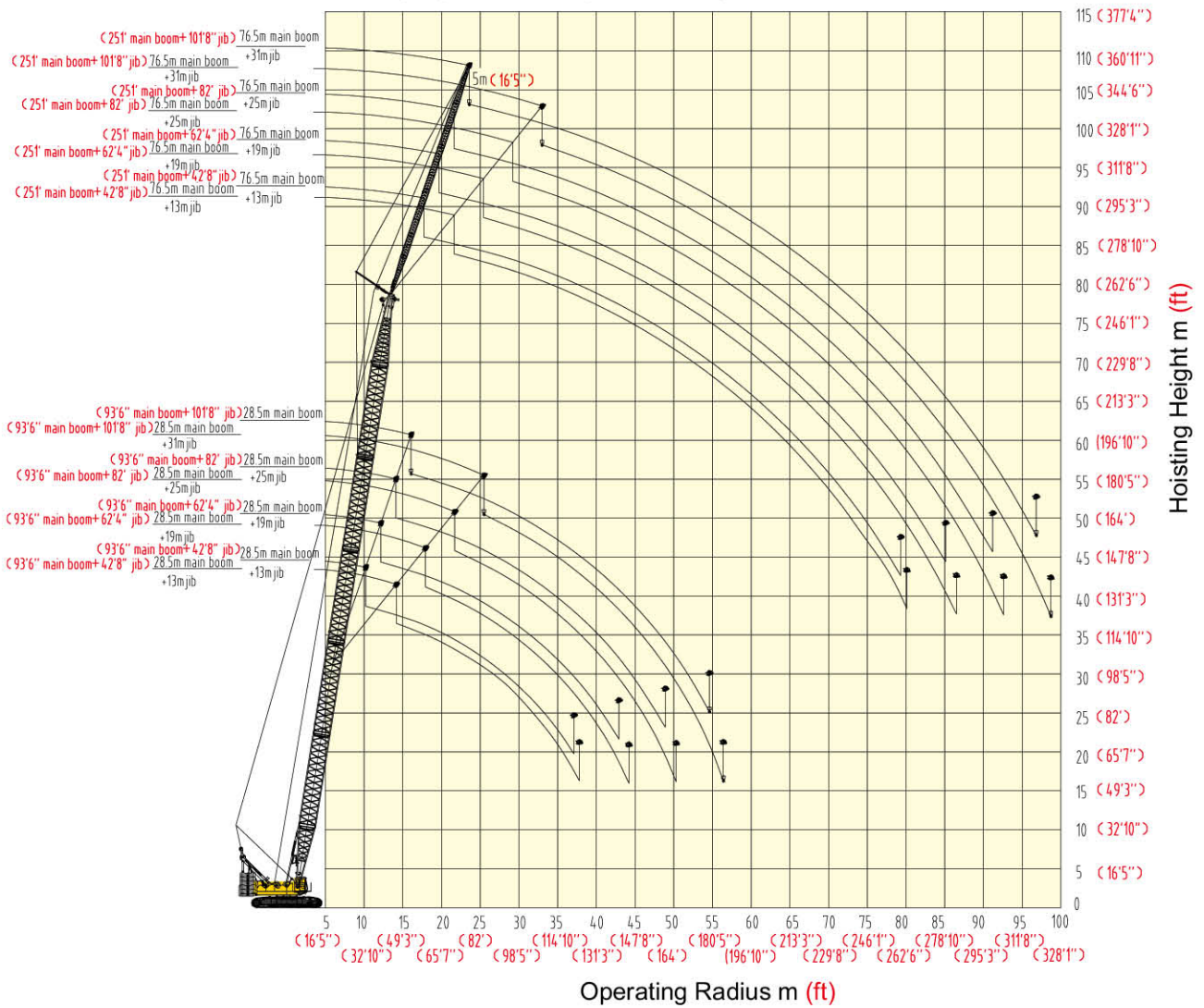
Jib Length (m)	Jib Insert		Boom Length (m)	Jib Offset Angle
	3 m(9'10")	6 m(19'8")		
13 (42'8")	1	–	28.5 ~ 76.5 (93'6" ~ 251')	10° , 30°
19 (62'4")	1	1	28.5 ~ 76.5 (93'6" ~ 251')	10° , 30°
25 (82')	1	2	28.5 ~ 76.5 (93'6" ~ 251')	10° , 30°
31 (101'8")	1	3	28.5 ~ 76.5 (93'6" ~ 251')	10° , 30°



Fixed jib combination 13m(42'8"), 19m(62'4"), 25m(82'), 31m(101'8")

Operating Range Diagram of FJ Operating Condition

Fixed jib (jib offset angle 10°+30°)



Load Charts of FJ Operating Condition

Load Charts of SCC2500C FJ Operating Condition									
(not including main hook, counterweight 85.2t+5.8t (187,800lb+12,700lb))					No main hook, jib offset angle: 10°				
		28.5 (93'6")				40.5 (132'10")			
Length of main boom	(m) (ft)	13 (42'8")	19 (62'4")	25 (82'0")	31 (101'8")	13 (42'8")	19 (62'4")	25 (82'0")	31 (101'8")
Length of jib(m)	(ft)								
Load radius(m)	(ft)								
10	10.4/27.3 (32'10")								
12	26.0 (85'7")	12.3/22.0 (40'4"/48)				12.2/27.3 (40'0"/60)			
14	24.8 (81'3")	20.8 (68'3")	14.3/12.3 (46'11"/27)			26.3 (86'4")	14.2/22.1 (46'7"/48)		
16	23.5 (77'1")	19.7 (64'6")	12.0 (39'4")	16.2/7.0 (53'2"/15)		25.3 (83'1")	21.0 (68'9")	16.2/12.5 (53'2"/27)	
18	22.2 (72'8")	18.8 (61'7")	11.4 (37'5")	6.6 (21'6")		24.4 (79'9")	20.1 (66'0")	12.0 (39'4")	18.1/7.9 (59'5"/17)
20	21.1 (69'3")	17.9 (57'1")	10.9 (34'1")	6.3 (20'8")		23.6 (77'4")	19.3 (62'0")	11.6 (36'1")	6.7 (20'7")
22	20.2 (66'4")	17.1 (56'1")	10.5 (34'5")	6.0 (19'8")		22.7 (74'6")	18.6 (61'0")	11.2 (36'7")	6.4 (21'0")
24	19.3 (63'4")	16.4 (53'8")	10.1 (33'0")	5.7 (18'5")		21.9 (72'0")	17.9 (58'5")	10.8 (35'3")	6.1 (20'0")
26	18.5 (60'8")	15.7 (51'6")	9.6 (31'6")	5.4 (17'5")		21.2 (69'7")	17.2 (56'2")	10.4 (34'1")	5.9 (18'10")
28	17.6 (57'7")	14.6 (47'9")	9.3 (30'6")	5.2 (17'1")		20.4 (67'1")	16.7 (54'8")	10.1 (32'8")	5.6 (18'1")
30	17.0 (55'9")	13.7 (44'6")	8.9 (28'7")	5.0 (16'5")		19.8 (64'7")	16.2 (53'0")	9.8 (31'0")	5.4 (17'5")
32	16.4 (53'8")	12.9 (42'4")	8.6 (27'7")	4.8 (15'9")		19.1 (62'3")	15.5 (50'8")	9.4 (30'0")	5.2 (17'1")
34	15.8 (51'8")	12.1 (39'5")	8.3 (27'2")	4.6 (15'1")		18.4 (60'4")	14.7 (48'0")	9.1 (29'3")	5.0 (16'5")
36	15.2 (49'7")	11.5 (37'5")	8.0 (26'3")	4.4 (14'5")		17.6 (57'5")	13.9 (46'0")	8.9 (28'0")	4.9 (16'1")
38	37.1/14.8 (124'8")	10.9 (35'7")	7.8 (25'5")	4.2 (13'9")		17.0 (55'6")	13.3 (43'6")	8.6 (27'7")	4.7 (15'3")
40		10.5 (34'5")	7.4 (24'3")	4.0 (13'1")		16.4 (53'8")	12.6 (41'4")	8.4 (26'7")	4.5 (14'7")
42		10.0 (32'8")	7.2 (23'7")	3.9 (12'7")		15.8 (51'8")	12.0 (39'4")	8.1 (26'1")	4.4 (14'3")
44		42.9/9.9 (140'9"/21)	7.0 (22'8")	3.7 (12'0")		15.2 (50'0")	11.6 (38'0")	7.9 (25'7")	4.2 (13'6")
46			6.9 (22'4")	3.6 (11'8")		14.5 (47'5")	11.1 (36'3")	7.7 (25'0")	4.1 (13'2")
48			6.7 (21'10")	3.4 (11'2")		47.7/13.5 (156'6"/29)	10.7 (34'6")	7.4 (24'3")	3.9 (12'6")
50			48.9/6.7 (160'5"/14)	3.3 (10'8")			10.4 (34'0")	7.3 (23'8")	3.8 (12'3")
52				3.2 (10'4")			10.0 (32'8")	7.1 (23'0")	3.7 (11'10")
54				3.1 (10'0")			53.4/9.8 (175'2"/21)	7.0 (22'8")	3.6 (11'6")
56				54.6/3.1 (179'2"/6)				6.8 (22'0")	3.5 (11'3")
58								6.7 (21'7")	3.4 (11'0")
60								59.4/6.6 (194'11"/14)	3.3 (10'8")
62									3.2 (10'4")
64									3.1 (10'0")
66									65.2/3.1 (213'11"/6)

- Notes: 1. The actual lifting load is the value of the rated lifting load in the table deducted by the weights of the hook blocks, hangers and wire ropes reeving between the hook block and boom/jib head.
2. The rated lifting load in the charts is the value when the crane is hoisting load on level and hard ground and the load is slowly and steadily hoisted, and meanwhile the crane is not traveling.
3. Rated load is within 75% of tipping load.
4. Cells 40% grayed and italicized indicate that the operating condition is with both the standard counterweight and additional counterweight; and cells framed and grayed indicate that the lifting capacity depends on strength of boom system.

Load Charts of FJ Operating Condition

Load Charts of SCC2500C FJ Operating Condition									
(not including main hook, counterweight 85.2t+5.8t (187,800lb+12,700lb))					No main hook, jib offset angle: 10°				
Unit: kg(lb)×1000									
Length of main boom (m)	Length of jib(m) (ft)	52.5 (172'3")				64.5 (211'7")			
		13 (42'8")	19 (62'4")	25 (82'0")	31 (101'8")	13 (42'8")	19 (62'4")	25 (82'0")	31 (101'8")
14 (45'11")	14.1/27.3 (46'3"/60)								
16 (52'6")	26.4 (58.2)		16.1/22.0 (52'10"/48)			27.3 (60.1)			
18 (59'1")	25.6 (56.4)	21.1 (46.5)		12.5 (27.5)			22.0 (48.5)	19.9/12.5 (65'3"/27)	
20 (65'7")	24.9 (54.8)	20.3 (44.7)		12.1 (26.6)	7.0 (15.4)		25.8 (56.8)	21.1 (27.3)	21.7/6.9 (71'2"/15)
22 (72'2")	24.0 (52.9)	19.7 (43.4)		11.7 (25.7)	6.7 (14.7)		25.2 (55.5)	20.5 (45.1)	12.1 (26.6)
24 (78'9")	23.3 (51.3)	19.0 (41.8)		11.3 (24.9)	6.4 (14.1)		24.6 (54.2)	19.9 (43.8)	11.8 (26)
26 (85'4")	22.5 (49.6)	18.5 (40.7)		11.0 (24.2)	6.2 (13.6)		24.0 (52.9)	19.4 (42.7)	11.5 (25.3)
28 (91'10")	21.9 (48.2)	17.9 (39.4)		10.7 (23.5)	6.0 (13.2)		23.5 (51.8)	18.8 (41.4)	11.2 (24.6)
30 (98'5")	21.3 (46.9)	17.3 (38.1)		10.4 (22.9)	5.8 (12.7)		22.8 (50.2)	18.4 (40.5)	10.9 (24)
32 (104'12")	20.7 (45.6)	16.9 (37.2)		10.1 (22.2)	5.6 (12.3)		22.1 (48.7)	17.9 (39.4)	10.6 (23.3)
34 (111'7")	20.1 (44.3)	16.4 (36.1)		9.8 (21.6)	5.4 (11.9)		20.2 (44.5)	17.4 (38.3)	10.4 (22.9)
36 (118'1")	19.6 (43.2)	16.0 (35.2)		9.5 (20.9)	5.2 (11.4)		18.5 (40.7)	17.0 (37.4)	10.1 (22.2)
38 (124'8")	18.1 (39.9)	15.4 (33.9)		9.3 (20.5)	5.1 (11.2)		16.9 (37.2)	16.6 (36.5)	9.9 (21.8)
40 (131'3")	16.7 (36.8)	14.7 (32.4)		9.0 (19.8)	4.9 (10.8)		15.6 (34.3)	16.0 (35.2)	9.6 (21.1)
42 (137'10")	15.5 (34.1)	14.1 (31)		8.8 (19.4)	4.8 (10.5)		14.4 (31.7)	14.8 (32.6)	9.4 (20.7)
44 (144'4")	14.4 (31.7)	13.5 (29.7)		8.6 (18.9)	4.6 (10.1)		13.3 (29.3)	13.8 (30.4)	9.2 (20.2)
46 (150'11")	13.4 (29.5)	13.0 (28.6)		8.4 (18.5)	4.5 (9.9)		12.2 (26.8)	12.8 (28.2)	9.0 (19.8)
48 (157'6")	12.4 (27.3)	12.4 (27.3)		8.2 (18)	4.3 (9.4)		11.3 (24.9)	11.8 (26)	8.8 (19.4)
50 (164'0")	11.6 (25.5)	12.0 (26.4)		8.0 (17.6)	4.2 (9.2)		10.5 (23.1)	10.9 (24)	8.6 (18.9)
52 (170'7")	10.9 (24)	11.3 (24.9)		7.8 (17.1)	4.1 (9)		9.8 (21.6)	10.2 (22.4)	8.4 (18.5)
54 (177'2")	10.2 (22.4)	10.6 (23.3)		7.7 (16.9)	4.0 (8.8)		9.1 (20)	9.5 (20.9)	8.2 (18)
56 (183'9")	9.6 (21.1)	10.0 (22)		7.4 (16.3)	3.9 (8.5)		8.4 (18.5)	8.9 (19.6)	8.1 (17.8)
58 (190'3")	9.0 (19.8)	9.4 (20.7)		7.3 (16)	3.8 (8.3)		7.9 (17.4)	8.3 (18.2)	7.9 (17.4)
60 (196'10")	8.8 (19.1)	8.8 (19.1)		7.2 (15.8)	3.7 (8.1)		7.2 (15.8)	7.7 (16.9)	7.8 (17.1)
62 (203'5")	8.3 (18.2)	8.3 (18.2)		7.0 (15.4)	3.6 (7.9)		6.7 (14.7)	7.1 (15.6)	7.7 (16.9)
64 (209'12")	8.3 (18.2)	64.0/7.9 (209'12"/17)		6.9 (15.2)	3.5 (7.7)		6.2 (13.6)	6.6 (14.5)	7.1 (15.6)
66 (216'6")				6.8 (14.9)	3.4 (7.4)		5.8 (12.7)	6.2 (13.6)	6.7 (14.7)
68 (223'1")				6.7 (14.7)	3.3 (7.2)		5.4 (11.9)	5.8 (12.7)	6.3 (13.8)
70 (229'8")				70.0/6.6 (229'8"/14)	3.3 (7.2)		68.8/5.2 (225'9"/11)	5.4 (11.9)	5.8 (12.7)
72 (236'3")					3.2 (7)			5.0 (11)	5.5 (12.1)
74 (242'9")					3.1 (6.8)			4.7 (10.3)	5.1 (11.2)
76 (249'4")					75.7/3.1 (248'4"/6)			74.6/4.6 (244'9"/10)	4.8 (10.5)
78 (255'11")									4.4 (9.7)
80 (262'6")									4.1 (9)
82 (269'0")									80.5/4.1 (264'1"/9)
84 (275'7")									3.1 (6.8)
86 (282'2")									3.1 (6.8)
88 (288'9")									86.3/3.1 (283'2"/6)

- Notes:
1. The actual lifting load is the value of the rated lifting load in the table deducted by the weights of the hook blocks, hangers and wire ropes reeving between the hook block and boom/jib head.
 2. The rated lifting load in the charts is the value when the crane is hoisting load on level and hard ground and the load is slowly and steadily hoisted, and meanwhile the crane is not traveling.
 3. Rated load is within 75% of tipping load.
 4. Cells 40% grayed and italicized indicate that the operating condition is with both the standard counterweight and additional counterweight; and cells framed and grayed indicate that the lifting capacity depends on strength of boom system.

Load Charts of FJ Operating Condition

Load Charts of SCC2500C FJ Operating Condition									
(not including main hook, counterweight 85.2t+5.8t (187,800lb+12,700lb))				No main hook, iib offset angle: 10°					
				Unit: kg (lb) × 1000					
Length of main boom	(m)		76.5						
	(ft)		(250'12")						
Load radius(m)	(ft)	13		19		25		31	
		(42'8")		(62'4")		(82'0")		(101'8")	
16	(52'6")	17.3/27.3 (56'9"/60)							
18	(59'1")	27.2 (59.9)	19.8/22.0 (64'12"/48)						
20	(65'7")	26.6 (58.6)	21.8 (48)	21.8/12.5 (71'6"/27)					
22	(72'2")	26.0 (57.3)	21.2 (46.7)	12.4 (27.3)	23.7/6.8 (77'9"/14)				
24	(78'9")	25.4 (55.9)	20.6 (45.4)	12.1 (26.6)	6.9 (15.2)				
26	(85'4")	24.9 (54.8)	20.1 (44.3)	11.8 (26)	6.7 (14.7)				
28	(91'10")	24.4 (53.7)	19.6 (43.2)	11.5 (25.3)	6.5 (14.3)				
30	(98'5")	22.1 (48.7)	19.1 (42.1)	11.3 (24.9)	6.3 (13.8)				
32	(104'12")	20.3 (44.7)	18.7 (41.2)	11.0 (24.2)	6.1 (13.4)				
34	(111'7")	18.7 (41.2)	18.3 (40.3)	10.8 (23.8)	6.0 (13.2)				
36	(118'1")	17.2 (37.9)	17.9 (39.4)	10.5 (23.1)	5.8 (12.7)				
38	(124'8")	15.8 (34.8)	16.2 (35.7)	10.3 (22.7)	5.7 (12.5)				
40	(131'3")	14.5 (31.9)	15.0 (33)	10.1 (22.2)	5.5 (12.1)				
42	(137'10")	13.3 (29.3)	13.8 (30.4)	9.9 (21.8)	5.4 (11.9)				
44	(144'4")	12.1 (26.6)	12.6 (27.7)	9.7 (21.3)	5.2 (11.4)				
46	(150'11")	11.1 (24.4)	11.6 (25.5)	9.5 (20.9)	5.1 (11.2)				
48	(157'6")	10.2 (22.4)	10.7 (23.5)	9.3 (20.5)	5.0 (11)				
50	(164'0")	9.4 (20.7)	9.9 (21.8)	9.0 (19.8)	4.9 (10.8)				
52	(170'7")	8.7 (19.1)	9.1 (20)	8.9 (19.6)	4.7 (10.3)				
54	(177'2")	8.0 (17.6)	8.4 (18.5)	8.7 (19.1)	4.6 (10.1)				
56	(183'9")	7.2 (15.8)	7.8 (17.1)	8.4 (18.5)	4.5 (9.9)				
58	(190'3")	6.6 (14.5)	7.1 (15.6)	7.8 (17.1)	4.4 (9.7)				
60	(196'10")	6.1 (13.4)	6.5 (14.3)	7.1 (15.6)	4.3 (9.4)				
62	(203'5")	5.6 (12.3)	6.0 (13.2)	6.6 (14.5)	4.2 (9.2)				
64	(209'12")	5.1 (11.2)	5.5 (12.1)	6.1 (13.4)	4.1 (9)				
66	(216'6")	4.7 (10.3)	5.1 (11.2)	5.6 (12.3)	4.0 (8.8)				
68	(223'1")	4.2 (9.2)	4.6 (10.1)	5.2 (11.4)	3.9 (8.5)				
70	(229'8")	3.8 (8.3)	4.2 (9.2)	4.8 (10.5)	3.9 (8.5)				
72	(236'3")	3.5 (7.7)	3.9 (8.5)	4.4 (9.7)	3.8 (8.3)				
74	(242'9")	3.1 (6.8)	3.5 (7.7)	4.1 (9)	3.7 (8.1)				
76	(249'4")	2.8 (6.1)	3.2 (7)	3.7 (8.1)	3.6 (7.9)				
78	(255'11")	2.4 (5.2)	2.9 (6.3)	3.4 (7.4)	3.6 (7.9)				
80	(262'6")	79.3/2.2 (260'2"/4)	2.6 (5.7)	3.1 (6.8)	3.4 (7.4)				
82	(269'0")		2.2 (4.8)	2.8 (6.1)	3.1 (6.8)				
84	(275'7")		1.9 (4.1)	2.4 (5.2)	2.8 (6.1)				
86	(282'2")		85.1/1.8 (279'2"/3)	2.2 (4.8)	2.6 (5.7)				
88	(288'9")			1.9 (4.1)	2.2 (4.8)				
90	(295'3")			1.7 (3.7)	2.0 (4.4)				
92	(301'10")			91.1/1.5 (298'11"/3)	1.7 (3.7)				
94	(308'5")				1.5 (3.3)				
96	(314'11")				1.3 (2.8)				
98	(321'6")				96.8/1.2 (317'7"/2)				

- Notes: 1. The actual lifting load is the value of the rated lifting load in the table deducted by the weights of the hook blocks, hangers and wire ropes reeving between the hook block and boom/jib head.
2. The rated lifting load in the charts is the value when the crane is hoisting load on level and hard ground and the load is slowly and steadily hoisted, and meanwhile the crane is not traveling.
3. Rated load is within 75% of tipping load.
4. Cells 40% grayed and italicized indicate that the operating condition is with both the standard counterweight and additional counterweight; and cells framed and grayed indicate that the lifting capacity depends on strength of boom system.

Load Charts of FJ Operating Condition

Load Charts of SCC2500C FJ Operating Condition									
(not including main hook, counterweight 85.2t+5.8t (187,800lb+12,700lb))					No main hook, jib offset angle: 10°				
Unit: kg(lb)×1000									
Length of main boom	(m)	28.5				40.5			
	(ft)	(93'6")				(132'10")			
Length of jib(m)	(ft)	13	19	25	31	13	19	25	31
	(ft)	(42'8")	(62'4")	(82'0")	(101'8")	(42'8")	(62'4")	(82'0")	(101'8")
14	14.3/19.9								
(45'11")	(46'11"/43)								
16	19.1	18.1/13.8				16.2/19.8			
(52'6")	(42.1)	(59'5"/30)				(53'2"/43)			
18	18.3	13.8				19.2	20.0/13.8		
(59'1")	(40.3)	(30.4)				(42.3)	(65'7"/30)		
20	17.1	13.8	21.9/8.4			18.8	13.8		
(65'7")	(37.6)	(30.4)	(71'10"/18)			(41.4)	(30.4)		
22	16.2	13.4	8.4			17.9	13.8	23.3/8.4	
(72'2")	(35.7)	(29.5)	(18.5)			(39.4)	(30.4)	(76'5"/18)	
24	15.5	12.9	8.1	25.6/4.3		17.1	13.5	8.3	
(78'9")	(34.1)	(28.4)	(17.8)	(83'12"/9)		(37.6)	(29.7)	(18.2)	
26	14.8	12.2	7.8	4.2		16.4	13.3	8.1	27.5/4.3
(85'4")	(32.6)	(26.8)	(17.1)	(9.2)		(36.1)	(29.3)	(17.8)	(90'3"/9)
28	14.2	11.6	7.5	4.1		15.8	12.8	7.9	4.2
(91'10")	(31.3)	(25.5)	(16.5)	(9)		(34.8)	(28.2)	(17.4)	(9.2)
30	13.7	11.1	7.3	3.9		15.2	12.2	7.7	4.1
(98'5")	(30.2)	(24.4)	(16)	(8.5)		(33.5)	(26.8)	(16.9)	(9)
32	13.2	10.6	7.1	3.8		14.8	11.8	7.4	3.9
(104'12")	(29.1)	(23.3)	(15.6)	(8.3)		(32.6)	(26)	(16.3)	(8.5)
34	13.0	10.2	6.9	3.6		14.3	11.3	7.3	3.8
(111'7")	(28.6)	(22.4)	(15.2)	(7.9)		(31.5)	(24.9)	(16)	(8.3)
36	12.8	9.9	6.7	3.5		13.9	11.0	7.1	3.7
(118'1")	(28.2)	(21.8)	(14.7)	(7.7)		(30.6)	(24.2)	(15.6)	(8.1)
38	37.8/12.4	9.6	6.6	3.4		13.6	10.6	6.9	3.6
(124'8")	(124'0"/27)	(21.1)	(14.5)	(7.4)		(29.9)	(23.3)	(15.2)	(7.9)
40		9.4	6.4	3.3		13.3	10.3	6.8	3.5
(131'3")		(20.7)	(14.1)	(7.2)		(29.3)	(22.7)	(14.9)	(7.7)
42		9.2	6.3	3.2		13.1	10.1	6.7	3.4
(137'10")		(20.2)	(13.8)	(7)		(28.8)	(22.2)	(14.7)	(7.4)
44		9.1	6.3	3.1		12.9	9.8	6.6	3.3
(144'4")		(20)	(13.8)	(6.8)		(28.4)	(21.6)	(14.5)	(7.2)
46		44.2/9.1	6.2	3.0		12.6	9.6	6.5	3.2
(150'11")		(145'0"/20)	(13.6)	(6.6)		(27.7)	(21.1)	(14.3)	(7)
48			6.2	2.9		12.6	9.4	6.4	3.2
(157'6")			(13.6)	(6.3)		(27.7)	(20.7)	(14.1)	(7)
50			6.2	2.9		48.4/12.6	9.3	6.3	3.1
(164'0")			(13.6)	(6.3)		(158'9"/27)	(20.5)	(13.8)	(6.8)
52			50.3/6.2	2.8			9.2	6.2	3.0
(170'7")			(165'0"/13)	(6.1)			(20.2)	(13.6)	(6.6)
54				2.8			9.1	6.2	3.0
(177'2")				(6.1)			(20)	(13.6)	(6.6)
56				2.8			54.8/9.1	6.2	2.9
(183'9")				(6.1)			(179'9"/20)	(13.6)	(6.3)
58				56.4/2.8				6.2	2.8
(190'3")				(185'0"/6)				(13.6)	(6.1)
60								6.2	2.8
(196'10")								(13.6)	(6.1)
62								60.9/6.2	2.8
(203'5")								(199'10"/13)	(6.1)
64									2.8
(209'12")									(6.1)
66									2.8
(216'6")									(6.1)
68									67.0/2.8
(223'1")									(219'10"/6)

- Notes: 1. The actual lifting load is the value of the rated lifting load in the table deducted by the weights of the hook blocks, hangers and wire ropes reeving between the hook block and boom/jib head.
2. The rated lifting load in the charts is the value when the crane is hoisting load on level and hard ground and the load is slowly and steadily hoisted, and meanwhile the crane is not traveling.
3. Rated load is within 75% of tipping load.
4. Cells 40% grayed and italicized indicate that the operating condition is with both the standard counterweight and additional counterweight; and cells framed and grayed indicate that the lifting capacity depends on strength of boom system.

Load Charts of FJ Operating Condition

Load Charts of SCC2500C FJ Operating Condition									
(not including main hook, counterweight 85.2t+5.8t (187,800lb+12,700lb))					No main hook, jib offset angle: 10°				
Unit: kg(lb)×1000									
Length of main boom	(m)	52.5 (172'3")				64.5 (211'7")			
		13 (42'8")	19 (62'4")	25 (82'0")	31 (101'8")	13 (42'8")	19 (62'4")	25 (82'0")	31 (101'8")
Length of jib(m)	(ft)	13 (42'8")	19 (62'4")	25 (82'0")	31 (101'8")	13 (42'8")	19 (62'4")	25 (82'0")	31 (101'8")
18 (59'1")	18.1/19.8 (59'5"/43)								
20 (65'7")	19.3 (42.5)	21.8/13.8 (71'6"/30)				20.0/19.8 (65'7"/43)			
22 (72'2")	18.9 (41.6)	13.8 (30.4)				19.3 (42.5)	23.7/13.8 (77'9"/30)		
24 (78'9")	18.4 (40.5)	13.8 (30.4)	25.6/8.4 (83'12"/18)			19.0 (41.8)	13.8 (30.4)		
26 (85'4")	17.6 (38.8)	13.6 (29.9)	8.3 (18.2)			18.7 (41.2)	13.8 (30.4)	27.5/8.4 (90'3"/18)	
28 (91'10")	17.0 (37.4)	13.4 (29.5)	8.1 (17.8)	29.4/4.3 (96'5"/9)		18.1 (39.9)	13.7 (30.2)	8.3 (18.2)	
30 (98'5")	16.5 (36.3)	13.2 (29.1)	8.0 (17.6)	4.2 (9.2)		17.5 (38.5)	13.5 (29.7)	8.1 (17.8)	31.3/4.2 (102'8"/9)
32 (104'12")	16.0 (35.2)	12.6 (27.7)	7.8 (17.1)	4.1 (9)		17.0 (37.4)	13.3 (29.3)	8.0 (17.6)	4.2 (9.2)
34 (111'7")	15.5 (34.1)	12.2 (26.8)	7.5 (16.5)	4.0 (8.8)		16.5 (36.3)	13.1 (28.8)	7.8 (17.1)	4.1 (9)
36 (118'1")	15.1 (33.2)	11.9 (26.2)	7.4 (16.3)	3.9 (8.5)		16.1 (35.4)	12.6 (27.7)	7.7 (16.9)	4.0 (8.8)
38 (124'8")	14.7 (32.4)	11.5 (25.3)	7.2 (15.8)	3.8 (8.3)		15.7 (34.6)	12.2 (26.8)	7.5 (16.5)	3.9 (8.5)
40 (131'3")	14.4 (31.7)	11.2 (24.6)	7.1 (15.6)	3.7 (8.1)		15.3 (33.7)	11.9 (26.2)	7.3 (16)	3.8 (8.3)
42 (137'10")	14.0 (30.8)	10.9 (24)	7.0 (15.4)	3.6 (7.9)		14.9 (32.8)	11.6 (25.5)	7.2 (15.8)	3.7 (8.1)
44 (144'4")	13.8 (30.4)	10.6 (23.3)	6.9 (15.2)	3.5 (7.7)		13.8 (30.4)	11.3 (24.9)	7.1 (15.6)	3.6 (7.9)
46 (150'11")	13.5 (29.7)	10.4 (22.9)	6.8 (14.9)	3.4 (7.4)		12.6 (27.7)	11.1 (24.4)	7.0 (15.4)	3.5 (7.7)
48 (157'6")	12.8 (28.2)	10.2 (22.4)	6.7 (14.7)	3.3 (7.2)		11.7 (25.7)	10.8 (23.8)	6.9 (15.2)	3.5 (7.7)
50 (164'0")	11.9 (26.2)	9.9 (21.8)	6.6 (14.5)	3.3 (7.2)		10.9 (24)	10.6 (23.3)	6.8 (14.9)	3.4 (7.4)
52 (170'7")	11.1 (24.4)	9.7 (21.3)	6.5 (14.3)	3.2 (7)		10.1 (22.2)	10.4 (22.9)	6.7 (14.7)	3.3 (7.2)
54 (177'2")	10.4 (22.9)	9.6 (21.1)	6.4 (14.1)	3.1 (6.8)		9.4 (20.7)	10.2 (22.4)	6.6 (14.5)	3.3 (7.2)
56 (183'9")	9.7 (21.3)	9.4 (20.7)	6.3 (13.8)	3.1 (6.8)		8.7 (19.1)	9.5 (20.9)	6.6 (14.5)	3.2 (7)
58 (190'3")	9.1 (20)	9.3 (20.5)	6.3 (13.8)	3.0 (6.6)		8.1 (17.8)	8.9 (19.6)	6.5 (14.3)	3.2 (7)
60 (196'10")	59.0/8.8 (193'7"/19)	9.2 (20.2)	6.2 (13.6)	3.0 (6.6)		7.4 (16.3)	8.3 (18.2)	6.4 (14.1)	3.1 (6.8)
62 (203'5")		8.6 (18.9)	6.2 (13.6)	2.9 (6.3)		6.9 (15.2)	7.7 (16.9)	6.4 (14.1)	3.1 (6.8)
64 (209'12")		8.1 (17.8)	6.1 (13.4)	2.9 (6.3)		6.4 (14.1)	7.1 (15.6)	6.3 (13.8)	3.0 (6.6)
66 (216'6")		65.4/7.7 (214'7"/16)	6.1 (13.4)	2.9 (6.3)		5.9 (13)	6.6 (14.5)	6.2 (13.6)	3.0 (6.6)
68 (223'1")			6.1 (13.4)	2.8 (6.1)		5.5 (12.1)	6.1 (13.4)	6.2 (13.6)	2.9 (6.3)
70 (229'8")			6.1 (13.4)	2.8 (6.1)		69.5/5.2 (228'0"/11)	5.7 (12.5)	6.2 (13.6)	2.9 (6.3)
72 (236'3")			71.5/6.1 (234'7"/13)	2.8 (6.1)			5.3 (11.6)	5.8 (12.7)	2.9 (6.3)
74 (242'9")				2.8 (6.1)			4.9 (10.8)	5.4 (11.9)	2.8 (6.1)
76 (249'4")				2.8 (6.1)			75.9/4.6 (249'0"/10)	5.0 (11)	2.8 (6.1)
78 (255'11")				77.6/2.8 (254'7"/6)				4.7 (10.3)	2.8 (6.1)
80 (262'6")								4.3 (9.4)	2.8 (6.1)
82 (269'0")								82.0/4.0 (269'0"/8)	2.8 (6.1)
84 (275'7")									2.8 (6.1)
86 (282'2")									2.8 (6.1)
88 (288'9")									2.8 (6.1)
90 (295'3")									88.1/2.8 (289'0"/6)

SCC2500C Hydraulic Crawler Crane



- Notes:
1. The actual lifting load is the value of the rated lifting load in the table deducted by the weights of the hook blocks, hangers and wire ropes reeving between the hook block and boom/jib head.
 2. The rated lifting load in the charts is the value when the crane is hoisting load on level and hard ground and the load is slowly and steadily hoisted, and meanwhile the crane is not traveling.
 3. Rated load is within 75% of tipping load.
 4. Cells 40% grayed and italicized indicate that the operating condition is with both the standard counterweight and additional counterweight; and cells framed and grayed indicate that the lifting capacity depends on strength of boom system.

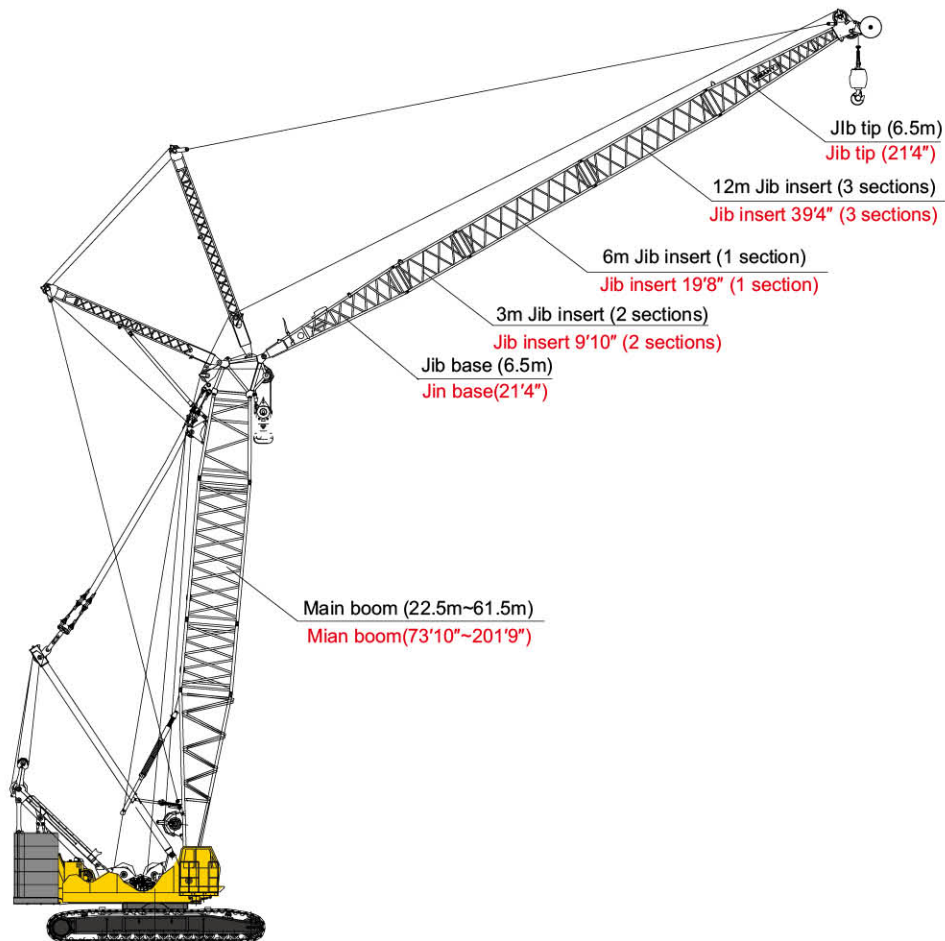
Load Charts of FJ Operating Condition

Load Charts of SCC2500C FJ Operating Condition					
(not including main hook, counterweight 85.2+5.8t (187,800lb+12,700lb))				No main hook, jib offset angle: 10°	
Length of main boom		(m)	76.5 (250'12")		
Length of jib		(ft)	13 (42'8")	19 (62'4")	25 (82'0")
Load radius		(ft)	31 (101'8")		
16 (52'6")	17.3/27.3 (56'9"/90")				
18 (55'1")	27.2 (89.5)	19.8/22.0 (64'12"/71'4")			
20 (65'7")	26.6 (84.1)	21.5 (69.2)	21.8/12.5 (71'6"/41'1")		
22 (72'2")	26.0 (85.3)	21.2 (69.6)	12.4 (40.7)	23.7/6.8 (77'9"/22'2")	
24 (78'9")	25.4 (83.5)	20.6 (67.6)	12.1 (39.6)	6.9 (21.0)	
26 (85'4")	24.9 (81.6)	20.1 (66.0)	11.8 (36.0)	6.7 (20.4)	
28 (91'10")	24.4 (79.5)	19.6 (64.3)	11.5 (34.6)	6.5 (19.8)	
30 (98'5")	22.1 (72.6)	19.1 (62.8)	11.3 (34.3)	6.3 (19.2)	
32 (104'12")	20.3 (66.6)	18.7 (61.3)	11.0 (33.6)	6.1 (18.6)	
34 (111'7")	18.7 (60.1)	18.3 (59.4)	10.8 (32.9)	6.0 (18.3)	
36 (118'1")	17.2 (56.3)	17.9 (57.4)	10.5 (32.3)	5.8 (17.7)	
38 (124'8")	15.8 (51.8)	16.2 (53.1)	10.3 (31.3)	5.7 (17.4)	
40 (131'3")	14.5 (47.2)	15.0 (49.2)	10.1 (30.8)	5.5 (16.9)	
42 (137'10")	13.3 (43.6)	13.8 (44.0)	9.9 (30.1)	5.4 (16.4)	
44 (144'4")	12.1 (39.6)	12.6 (40.7)	9.7 (29.5)	5.2 (15.9)	
46 (150'11")	11.1 (36.3)	11.6 (38.4)	9.5 (28.9)	5.1 (15.5)	
48 (157'6")	10.2 (33.3)	10.7 (35.6)	9.3 (28.3)	5.0 (15.1)	
50 (164'0")	9.4 (30.8)	9.9 (33.1)	9.0 (27.6)	4.9 (14.7)	
52 (170'7")	8.7 (28.2)	9.1 (30.7)	8.9 (27.1)	4.7 (14.3)	
54 (177'2")	8.0 (25.9)	8.4 (28.2)	8.7 (26.6)	4.6 (13.9)	
56 (183'9")	7.2 (23.6)	7.8 (26.3)	8.4 (26.1)	4.5 (13.6)	
58 (190'3")	6.6 (21.3)	7.1 (24.3)	7.8 (25.6)	4.4 (13.3)	
60 (196'10")	6.1 (19.2)	6.5 (22.3)	7.1 (25.0)	4.3 (13.0)	
62 (203'5")	5.6 (17.3)	6.0 (20.3)	6.6 (24.5)	4.2 (12.8)	
64 (209'12")	5.1 (15.6)	5.5 (18.7)	6.1 (24.0)	4.1 (12.6)	
66 (216'6")	4.7 (14.1)	5.1 (17.4)	5.6 (23.6)	4.0 (12.3)	
68 (223'1")	4.2 (12.8)	4.6 (16.4)	5.2 (23.1)	3.9 (12.1)	
70 (229'8")	3.8 (11.6)	4.2 (15.6)	4.8 (22.6)	3.9 (11.9)	
72 (236'3")	3.5 (10.8)	3.9 (14.9)	4.4 (22.1)	3.8 (11.7)	
74 (242'9")	3.1 (9.6)	3.5 (14.3)	4.1 (21.6)	3.7 (11.5)	
76 (249'4")	2.8 (8.6)	3.2 (13.8)	3.7 (21.1)	3.6 (11.3)	
78 (255'11")	2.4 (7.5)	2.9 (13.3)	3.4 (20.6)	3.6 (11.1)	
80 (262'6")	2.0 (6.6)	2.6 (12.8)	3.1 (20.1)	3.4 (10.9)	
82 (269'10")	1.7 (5.9)	2.2 (12.3)	2.8 (19.6)	3.1 (10.7)	
84 (275'7")	1.4 (5.2)	1.9 (11.9)	2.4 (19.1)	2.8 (10.5)	
86 (282'2")	1.1 (4.8)	1.5 (11.4)	2.2 (18.6)	2.6 (10.3)	
88 (288'9")	0.9 (4.1)	1.2 (11.0)	1.9 (18.1)	2.2 (10.1)	
90 (295'3")	0.7 (3.7)	1.0 (10.6)	1.7 (17.6)	2.0 (9.9)	
92 (301'10")			1.5 (17.1)	1.7 (9.7)	
94 (308'5")				1.5 (9.5)	
96 (314'11")				1.3 (9.3)	
98 (321'6")				1.2 (9.1)	

- Notes:
- The actual lifting load is the value of the rated lifting load in the table deducted by the weights of the hook blocks, hangers and wire ropes reeving between the hook block and boom/jib head.
 - The rated lifting load in the charts is the value when the crane is hoisting load on level and hard ground and the load is slowly and steadily hoisted, and meanwhile the crane is not traveling.
 - Rated load is within 75% of tipping load.
 - Cells 40% grayed and italicized indicate that the operating condition is with both the standard counterweight and additional counterweight; and cells framed and grayed indicate that the lifting capacity depends on strength of boom system.

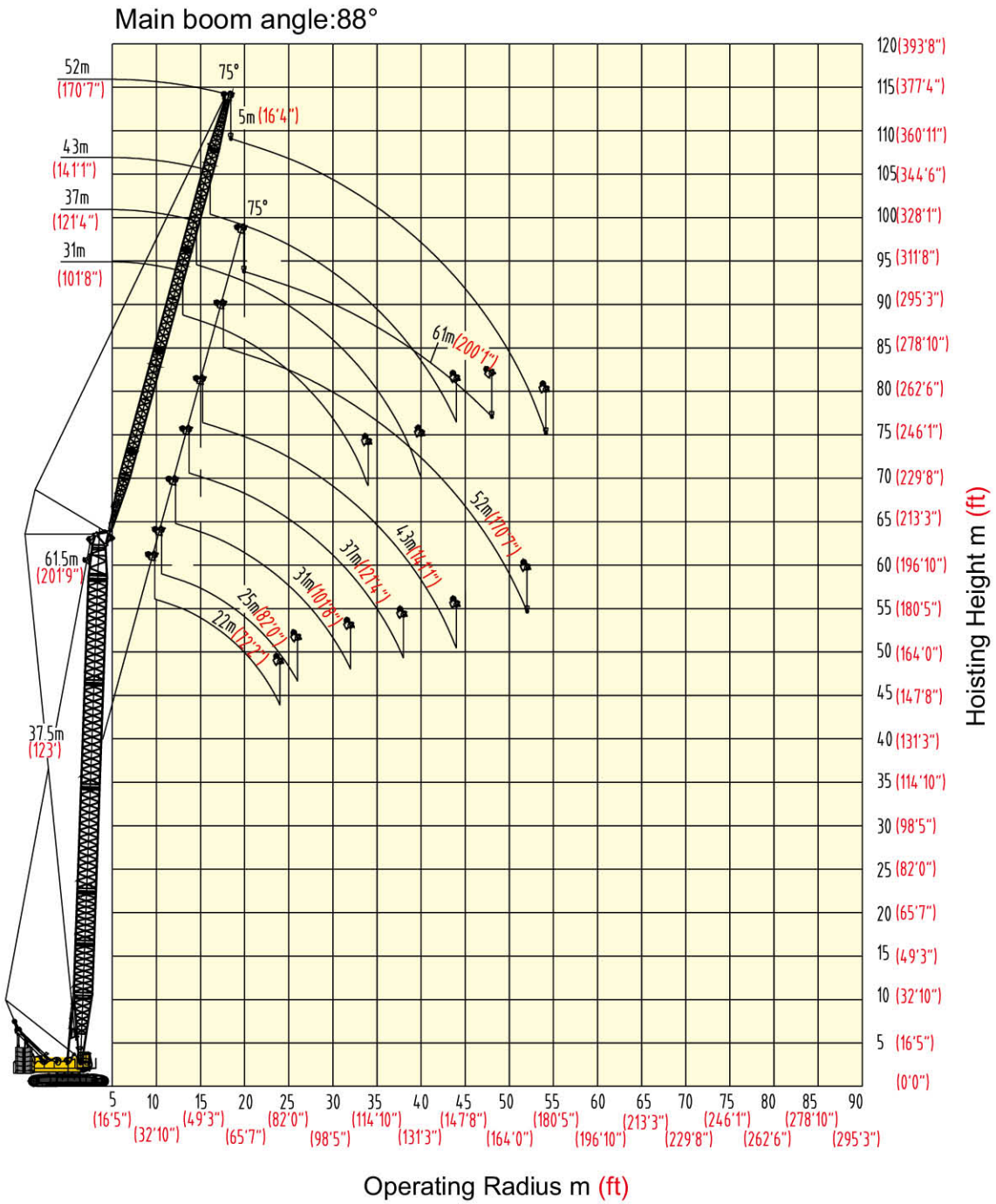
Combination of Luffing Jib

Jib Length (m)	Jib Insert			Boom Length (m)	Boom Angle
	3 m(9'10")	6 m(19'8")	12m(39'4")		
22 (72'2")	1	1	-	22.5 ~ 58.5 (73'10" ~ 191'11")	63° ~ 88°
25 (82')	-	-	1	22.5 ~ 61.5 (73'10" ~ 201'9")	63° ~ 88°
31 (101'8")	-	1	1	22.5 ~ 61.5 (73'10" ~ 201'9")	63° ~ 88°
37 (121'5")	-	-	2	22.5 ~ 61.5 (73'10" ~ 201'9")	63° ~ 88°
43 (141'1")	-	1	2	22.5 ~ 61.5 (73'10" ~ 201'9")	63° ~ 88°
52 (170'7")	1	-	3	22.5 ~ 61.5 (73'10" ~ 201'9")	63° ~ 88°
61 (200' 2")	2	1	3	22.5 ~ 52.5 (73'10" ~ 172'3")	63° ~ 88°



Combination of luffing jib: 22m(72'2"), 25m(82'0"), 31m(101'8"), 37m(121'5"), 43m(141'1"), 52m(170'7"), 61m(200'2")

Operating Range Diagram of LJ Operating Condition



Load Charts of LJ Operating Condition

Load Charts of SCC2500C LJ Operating Condition												
(not including main hook, counterweight 85.2t+5.8t (187,800lb+12,800lb)) unit: kg(lb)×1000												
Length of main boom(m)	22.5											
(ft)	(73'10")											
Length of jib(m)	22						25					
(ft)	(72'2")						(82'0")					
Angle of main boom(°)												
Load radius(m)	88	83	78	73	68	63	88	83	78	73	68	63
9.8	71.4											
(32'2")	(157.4)											
10	70.7											
(32'10")	(155.8)											
12	63.2						62.6					
(39'4")	(139.3)						(138)					
14	55.9	60.4					56.2					
(45'11")	(123.2)	(133.1)					(123.8)					
16	47.6	54.9					48.5	54.9				
(52'6")	(104.9)	(121)					(106.9)	(121)				
18	40.1	47.4	48.3				40.8	48.2	48.3			
(59'1")	(88.4)	(104.4)	(106.4)				(89.9)	(106.2)	(106.4)			
20	34.5	40.1	42.4				35.1	40.7	42.3			
(65'7")	(76)	(88.4)	(93.4)				(77.3)	(89.7)	(93.2)			
22	29.7	34.5	37.5	36.7			30.6	35.1	37.5	36.6		
(72'2")	(65.4)	(76)	(82.6)	(80.9)			(67.4)	(77.3)	(82.6)	(80.6)		
24		30.0	33.7	32.8	32.1		27.0	30.6	33.7	32.8		
(78'9")		(66.1)	(74.2)	(72.3)	(70.7)		(59.5)	(67.4)	(74.2)	(72.3)		
26			30.0	29.9	29.0		27.0	30.4	29.7	29.0		
(85'4")			(66.1)	(65.9)	(63.9)		(59.5)	(67)	(65.4)	(63.9)		
28				27.1	26.4	25.8	23.4	27.0	27.0	26.3		
(91'10")				(59.7)	(58.2)	(56.8)	(51.5)	(59.5)	(59.5)	(57.9)		
30					24.3	23.7			24.1	24.8	24.2	23.6
(98'5")					(53.5)	(52.2)			(53.1)	(54.6)	(53.3)	(52)
32						21.8				23.0	22.3	21.7
(104'12")						(48)				(50.7)	(49.1)	(47.8)
34											20.7	20.2
(111'7")											(45.6)	(44.5)
36												18.8
(118'1")												(41.4)
38												
(124'8")												
40												
(131'3")												
42												
(137'10")												
44												
(144'4")												
46												
(150'11")												
48												
(157'6")												

- Notes: 1. The actual lifting load is the value of the rated lifting load in the table deducted by the weights of the hook blocks, hangers and wire ropes reeving between the hook block and boom/jib head.
2. The rated lifting load in the charts is the value when the crane is hoisting load on level and hard ground and the load is slowly and steadily hoisted, and meanwhile the crane is not traveling.
3. Rated load is within 75% of tipping load.
4. Cells 40% grayed and italicized indicate that the operating condition is with both the standard counterweight and additional counterweight; and cells framed and grayed indicate that the lifting capacity depends on strength of boom system.

Load Charts of LJ Operating Condition

Load Charts of SCC2500C LJ Operating Condition												
(not including main hook, counterweight 85.2t+5.8t (187,800lb+12,800lb)) unit: kg(lb)×1000												
Length of main boom(m)	22.5											
(ft)	(73'10")											
Length of jib(m)	31						37					
	(101'8")						(121'5")					
Angle of main boom(°)	88	83	78	73	68	63	88	83	78	73	68	63
Load radius(m)												
9.8												
(32'2")												
10												
(32'10")												
12	62.6											
(39'4")	(138)											
14	56.2						41.3					
(45'11")	(123.8)						(91)					
16	48.8						41.0					
(52'6")	(107.5)						(90.3)					
18	41.1	48.3					37.9					
(59'1")	(90.6)	(106.4)					(83.5)					
20	35.4	41.5					35.3	37.8				
(65'7")	(78)	(91.4)					(77.8)	(83.3)				
22	30.9	35.7	37.2				31.8	35.3				
(72'2")	(68.1)	(78.7)	(82)				(70.1)	(77.8)				
24	27.3	31.2	33.4				28.2	31.8	33.4			
(78'9")	(60.1)	(68.7)	(73.6)				(62.1)	(70.1)	(73.6)			
26	24.4	27.6	30.2	29.5			25.1	28.2	30.2			
(85'4")	(53.7)	(60.8)	(66.5)	(65)			(55.3)	(62.1)	(66.5)			
28	21.9	24.7	27.3	26.8			22.6	25.1	27.5	26.8		
(91'10")	(48.2)	(54.4)	(60.1)	(59)			(49.8)	(55.3)	(60.6)	(59)		
30	19.9	22.2	24.4	24.7	23.9		20.5	22.6	25.1	24.6		
(98'5")	(43.8)	(48.9)	(53.7)	(54.4)	(52.6)		(45.1)	(49.8)	(55.3)	(54.2)		
32	16.7	20.1	21.9	22.7	22.0		18.7	20.5	22.6	22.6		
(104'12")	(36.8)	(44.3)	(48.2)	(50)	(48.5)		(41.2)	(45.1)	(49.8)	(49.8)		
34		17.6	19.9	21.1	20.4	20.0	17.0	18.7	20.5	21.0	20.4	
(111'7")		(38.8)	(43.8)	(46.5)	(44.9)	(44)	(37.4)	(41.2)	(45.1)	(46.2)	(44.9)	
36			18.1	19.6	19.0	18.6	15.6	17.1	18.7	19.5	19.0	
(118'1")			(39.9)	(43.2)	(41.8)	(41)	(34.3)	(37.6)	(41.2)	(42.9)	(41.8)	
38				18.3	17.7	17.3	13.4	15.7	17.1	18.3	17.7	17.2
(124'8")				(40.3)	(39)	(38.1)	(29.5)	(34.6)	(37.6)	(40.3)	(39)	(37.9)
40					16.6	16.2		14.0	15.7	17.1	16.6	16.1
(131'3")					(36.5)	(35.7)		(30.8)	(34.6)	(37.6)	(36.5)	(35.4)
42									14.5	15.7	15.6	15.2
(137'10")									(31.9)	(34.6)	(34.3)	(33.5)
44										14.5	14.7	14.3
(144'4")										(31.9)	(32.4)	(31.5)
46											13.9	13.5
(150'11")											(30.6)	(29.7)

- Notes: 1. The actual lifting load is the value of the rated lifting load in the table deducted by the weights of the hook blocks, hangers and wire ropes reeving between the hook block and boom/jib head.
2. The rated lifting load in the charts is the value when the crane is hoisting load on level and hard ground and the load is slowly and steadily hoisted, and meanwhile the crane is not traveling.
3. Rated load is within 75% of tipping load.
4. Cells 40% grayed and italicized indicate that the operating condition is with both the standard counterweight and additional counterweight; and cells framed and grayed indicate that the lifting capacity depends on strength of boom system.

Load Charts of LJ Operating Condition

Load Charts of SCC2500C LJ Operating Condition												
(not including main hook, counterweight 85.2t+5.8t (187,800lb+12,800lb)) unit: kg (lb)×1000												
Length of main boom(m) (ft)	22.5 (73'10")											
Length of jib(m) (ft)	43 (141'1")						52 (170'7")					
Angle of main boom(°)	88	83	78	73	68	63	88	83	78	73	68	63
Load radius(m)												
16 (52'6")	30.2 (66.5)											
18 (59'1")	28.3 (62.3)						18.1 (39.9)					
20 (65'7")	26.1 (57.5)						16.6 (36.5)					
22 (72'2")	24.3 (53.5)	25.1 (55.3)					15.4 (33.9)					
24 (78'9")	22.6 (49.8)	23.5 (51.8)					14.4 (31.7)	15.4 (33.9)				
26 (85'4")	21.3 (46.9)	21.9 (48.2)	24.2 (53.3)				13.4 (29.5)	14.3 (31.5)				
28 (91'10")	20.0 (44)	20.6 (45.4)	22.6 (49.8)				12.5 (27.5)	13.4 (29.5)				
30 (98'5")	18.9 (41.6)	19.5 (42.9)	21.2 (46.7)				11.7 (25.7)	12.5 (27.5)	13.4 (29.5)			
32 (104'12")	17.9 (39.4)	18.5 (40.7)	20.0 (44)	20.6 (45.4)			11.0 (24.2)	11.7 (25.7)	12.4 (27.3)			
34 (111'7")	16.9 (37.2)	17.4 (38.3)	19.0 (41.8)	19.5 (42.9)			10.4 (22.9)	11.0 (24.2)	11.7 (25.7)			
36 (118'1")	15.6 (34.3)	16.6 (36.5)	18.0 (39.6)	18.4 (40.5)	18.7 (41.2)		9.8 (21.6)	10.4 (22.9)	11.0 (24.2)	11.7 (25.7)		
38 (124'8")	14.4 (31.7)	15.8 (34.8)	17.0 (37.4)	17.4 (38.3)	17.4 (38.3)		9.3 (20.5)	9.8 (21.6)	10.4 (22.9)	11.0 (24.2)		
40 (131'3")	13.3 (29.3)	14.7 (32.4)	15.6 (34.3)	16.6 (36.5)	16.3 (35.9)		8.8 (19.4)	9.3 (20.5)	9.8 (21.6)	10.4 (22.9)		
42 (137'10")	12.1 (26.6)	13.6 (29.9)	14.4 (31.7)	15.9 (35)	15.3 (33.7)	15.0 (33)	8.3 (18.2)	8.8 (19.4)	9.3 (20.5)	9.8 (21.6)	10.3 (22.7)	
44 (144'4")	10.5 (23.1)	12.5 (27.5)	13.4 (29.5)	14.7 (32.4)	14.4 (31.7)	14.1 (31)	7.9 (17.4)	8.4 (18.5)	8.8 (19.4)	9.3 (20.5)	9.8 (21.6)	
46 (150'11")		11.2 (24.6)	12.3 (27.1)	13.7 (30.2)	13.6 (29.9)	13.3 (29.3)	7.2 (15.8)	8.0 (17.6)	8.4 (18.5)	8.8 (19.4)	9.3 (20.5)	
48 (157'6")			11.5 (25.3)	12.6 (27.7)	12.9 (28.4)	12.5 (27.5)	7.1 (15.6)	7.5 (16.5)	8.0 (17.6)	8.4 (18.5)	8.8 (19.4)	9.2 (20.2)
50 (164'0")				11.7 (25.7)	12.2 (26.8)	11.9 (26.2)	6.8 (14.9)	7.1 (15.6)	7.5 (16.5)	8.0 (17.6)	8.4 (18.5)	8.8 (19.4)
52 (170'7")						11.3 (24.9)	6.5 (14.3)	6.8 (14.9)	7.2 (15.8)	7.5 (16.5)	8.0 (17.6)	8.4 (18.5)
54 (177'2")								6.6 (14.5)	6.9 (15.2)	7.2 (15.8)	7.5 (16.5)	8.0 (17.6)
56 (183'9")									6.6 (14.5)	6.9 (15.2)	7.2 (15.8)	7.5 (16.5)
58 (190'3")										6.6 (14.5)	6.9 (15.2)	7.2 (15.8)
60 (196'10")											6.6 (14.5)	6.9 (15.2)
62 (203'5")												6.7 (14.7)

- Notes: 1. The actual lifting load is the value of the rated lifting load in the table deducted by the weights of the hook blocks, hangers and wire ropes reeving between the hook block and boom/jib head.
2. The rated lifting load in the charts is the value when the crane is hoisting load on level and hard ground and the load is slowly and steadily hoisted, and meanwhile the crane is not traveling.
3. Rated load is within 75% of tipping load.
4. Cells 40% grayed and italicized indicate that the operating condition is with both the standard counterweight and additional counterweight; and cells framed and grayed indicate that the lifting capacity depends on strength of boom system.

Load Charts of LJ Operating Condition

Load Charts of SCC2500C LJ Operating Condition										
(not including main hook, counterweight 85.2t+5.8t (187,800lb+12,800lb) unit: kg(lb)×1000										
Length of main boom(m)	22.5									
(ft)	(73'10")									
Length of jib(m)	61									
(ft)	(200'2")									
Angle of main boom(°)	88	83	78	73	68	63				
Load radius(m)										
16										
(52'6")										
18										
(59'1")										
20	10.0									
(65'7")	(22)									
22	9.3									
(72'2")	(20.5)									
24	8.6									
(78'9")	(18.9)									
26	8.0									
(85'4")	(17.6)									
28	7.3	8.0								
(91'10")	(16)	(17.6)								
30	6.8	7.3								
(98'5")	(14.9)	(16)								
32	6.3	6.8								
(104'12")	(13.8)	(14.9)								
34	5.6	6.3	6.8							
(111'7")	(12.3)	(13.8)	(14.9)							
36	4.9	5.6	6.3							
(118'1")	(10.8)	(12.3)	(13.8)							
38	4.3	4.9	5.6							
(124'8")	(9.4)	(10.8)	(12.3)							
40	3.8	4.3	4.9							
(131'3")	(8.3)	(9.4)	(10.8)							
42	3.3	3.8	4.3	4.9						
(137'10")	(7.2)	(8.3)	(9.4)	(10.8)						
44	2.8	3.3	3.8	4.3						
(144'4")	(6.1)	(7.2)	(8.3)	(9.4)						
46	2.3	2.8	3.3	3.7						
(150'11")	(5)	(6.1)	(7.2)	(8.1)						
48	1.8	2.3	2.8	3.2						
(157'6")	(3.9)	(5)	(6.1)	(7)						
50		1.8	2.3	2.8						
(164'0")		(3.9)	(5)	(6.1)						
52			1.8	2.2						
(170'7")			(3.9)	(4.8)						
54				1.8						
(177'2")				(3.9)						
56										
(183'9")										
58										
(190'3")										
60										
(196'10")										
62										
(203'5")										

- Notes: 1. The actual lifting load is the value of the rated lifting load in the table deducted by the weights of the hook blocks, hangers and wire ropes reeving between the hook block and boom/jib head.
2. The rated lifting load in the charts is the value when the crane is hoisting load on level and hard ground and the load is slowly and steadily hoisted, and meanwhile the crane is not traveling.
3. Rated load is within 75% of tipping load.
4. Cells 40% grayed and italicized indicate that the operating condition is with both the standard counterweight and additional counterweight; and cells framed and grayed indicate that the lifting capacity depends on strength of boom system.

Load Charts of LJ Operating Condition

Load Charts of SCC2500C LJ Operating Condition												
(not including main hook, counterweight 85.2t+5.8t (187,800lb+12,800lb)) unit: kg (lb)×1000												
Length of main boom(m)	31.5											
(ft)	(103'4")											
Length of jib(m)	22						25					
(ft)	(72'2")						(82'0")					
Angle of main boom(°)	88	83	78	73	68	63	88	83	78	73	68	63
Load radius(m)	88	83	78	73	68	63	88	83	78	73	68	63
10	68.9											
(32'10")	(151.8)											
12	63.2						62.6					
(39'4")	(139.3)						(138)					
14	56.7						57.2					
(45'11")	(125)						(126.1)					
16	48.9	53.5					49.8	52.8				
(52'6")	(107.8)	(117.9)					(109.7)	(116.4)				
18	41.0	47.6					41.7	47.1				
(59'1")	(90.3)	(104.9)					(91.9)	(103.8)				
20	35.1	42.3	41.2				35.8	42.4	40.8			
(65'7")	(77.3)	(93.2)	(90.8)				(78.9)	(93.4)	(89.9)			
22	30.5	37.2	36.5				31.1	37.4	36.4			
(72'2")	(67.2)	(82)	(80.4)				(68.5)	(82.4)	(80.2)			
24	24.5	32.4	32.6	31.5			27.4	32.8	32.6			
(78'9")	(54)	(71.4)	(71.8)	(69.4)			(60.4)	(72.3)	(71.8)			
26		28.4	29.6	28.5			23.8	28.8	29.5	28.4		
(85'4")		(62.6)	(65.2)	(62.8)			(52.4)	(63.4)	(65)	(62.6)		
28			26.9	26.0	24.8			25.5	26.9	25.8		
(91'10")			(59.3)	(57.3)	(54.6)			(56.2)	(59.3)	(56.8)		
30				23.9	22.7				24.7	23.7	22.6	
(98'5")				(52.6)	(50)				(54.4)	(52.2)	(49.8)	
32				21.9	21.0	20.2			22.7	21.8	20.9	
(104'12")				(48.2)	(46.2)	(44.5)			(50)	(48)	(46)	
34					19.5	18.8				20.2	19.4	18.6
(111'7")					(42.9)	(41.4)				(44.5)	(42.7)	(41)
36						17.4					18.1	17.2
(118'1")						(38.3)					(39.9)	(37.9)
38												16.1
(124'8")												(35.4)
40												15.1
(131'3")												(33.2)
42												
(137'10")												
44												
(144'4")												
46												
(150'11")												
48												
(157'6")												
50												
(164'0")												
52												
(170'7")												
54												
(177'2")												

- Notes: 1. The actual lifting load is the value of the rated lifting load in the table deducted by the weights of the hook blocks, hangers and wire ropes reeving between the hook block and boom/jib head.
2. The rated lifting load in the charts is the value when the crane is hoisting load on level and hard ground and the load is slowly and steadily hoisted, and meanwhile the crane is not traveling.
3. Rated load is within 75% of tipping load.
4. Cells 40% grayed and italicized indicate that the operating condition is with both the standard counterweight and additional counterweight; and cells framed and grayed indicate that the lifting capacity depends on strength of boom system.

Load Charts of LJ Operating Condition

Load Charts of SCC2500C LJ Operating Condition												
(not including main hook, counterweight 85.2t+5.8t (187,800lb+12,800lb)) unit: kg(lb)×1000												
Length of main boom(m) (ft)	31.5 (103'4")											
Length of jib(m) (ft)	31 (101'8")						37 (121'5")					
Angle of main boom(°)												
Load radius(m)	88	83	78	73	68	63	88	83	78	73	68	63
10 (32'10")												
12 (39'4")												
14 (45'11")	54.6 (120.3)						41.3 (91)					
16 (52'6")	50.1 (110.4)						41.3 (91)					
18 (59'1")	42.0 (92.5)	45.2 (99.6)					38.4 (84.6)					
20 (65'7")	36.0 (79.3)	40.8 (89.9)					35.6 (78.4)	39.3 (86.6)				
22 (72'2")	31.4 (69.2)	37.1 (81.7)					32.4 (71.4)	35.7 (78.7)				
24 (78'9")	27.7 (61)	33.5 (73.8)	32.3 (71.2)				28.6 (63)	32.7 (72)				
26 (85'4")	24.7 (54.4)	29.4 (64.8)	29.2 (64.3)				25.5 (56.2)	30.0 (66.1)	29.0 (63.9)			
28 (91'10")	22.1 (48.7)	26.1 (57.5)	26.6 (58.6)	25.6 (56.4)			22.8 (50.2)	26.6 (58.6)	26.6 (58.6)			
30 (98'5")	20.0 (44)	23.5 (51.8)	24.4 (53.7)	23.5 (51.8)			20.7 (45.6)	23.9 (52.6)	24.5 (54)			
32 (104'12")	17.6 (38.8)	21.1 (46.5)	22.4 (49.3)	21.6 (47.6)			18.9 (41.6)	21.5 (47.3)	22.5 (49.6)	21.5 (47.3)		
34 (111'7")		19.1 (42.1)	20.8 (45.8)	20.0 (44)	19.0 (41.8)		17.2 (37.9)	19.6 (43.2)	20.9 (46)	19.9 (43.8)		
36 (118'1")			19.4 (42.7)	18.7 (41.2)	17.6 (38.8)		15.8 (34.8)	17.9 (39.4)	19.4 (42.7)	18.6 (41)	17.6 (38.8)	
38 (124'8")			17.9 (39.4)	17.4 (38.3)	16.5 (36.3)	15.9 (35)	14.0 (30.8)	16.4 (36.1)	18.2 (40.1)	17.3 (38.1)	16.5 (36.3)	
40 (131'3")				16.3 (35.9)	15.5 (34.1)	14.9 (32.8)		15.1 (33.2)	16.9 (37.2)	16.2 (35.7)	15.4 (33.9)	
42 (137'10")					14.5 (31.9)	14.0 (30.8)			15.6 (34.3)	15.2 (33.5)	14.5 (31.9)	13.8 (30.4)
44 (144'4")						13.2 (29.1)			14.4 (31.7)	14.4 (31.7)	13.7 (30.2)	13.0 (28.6)
46 (150'11")						12.4 (27.3)				13.6 (29.9)	12.9 (28.4)	12.2 (26.8)
48 (157'6")											12.2 (26.8)	11.6 (25.5)
50 (164'0")												11.0 (24.2)
52 (170'7")												10.4 (22.9)
54 (177'2")												

- Notes: 1. The actual lifting load is the value of the rated lifting load in the table deducted by the weights of the hook blocks, hangers and wire ropes reeving between the hook block and boom/jib head.
2. The rated lifting load in the charts is the value when the crane is hoisting load on level and hard ground and the load is slowly and steadily hoisted, and meanwhile the crane is not traveling.
3. Rated load is within 75% of tipping load.
4. Cells 40% grayed and italicized indicate that the operating condition is with both the standard counterweight and additional counterweight; and cells framed and grayed indicate that the lifting capacity depends on strength of boom system.

Load Charts of LJ Operating Condition

Load Charts of SCC2500C LJ Operating Condition												
(not including main hook, counterweight 85.2t+5.8t (187,800lb+12,800lb)) unit: kg(lb)×1000												
Length of main boom(m) (ft)	31.5 (103'4")											
Length of jib(m) (ft)	43 (141'1")					52 (170'7")						
Angle of main boom(°) Load radius(m)	88	83	78	73	68	63	88	83	78	73	68	63
14 (45'11")												
16 (52'6")	30.2 (66.5)											
18 (59'1")	28.5 (62.8)						18.3 (40.3)					
20 (65'7")	26.3 (57.9)						16.8 (37)					
22 (72'2")	24.5 (54)	26.1 (57.5)					15.6 (34.3)					
24 (78'9")	22.8 (50.2)	24.3 (53.5)					14.5 (31.9)					
26 (85'4")	21.4 (47.1)	22.7 (50)					13.5 (29.7)	14.9 (32.8)				
28 (91'10")	20.1 (44.3)	21.3 (46.9)	24.1 (53.1)				12.5 (27.5)	13.9 (30.6)				
30 (98'5")	19.0 (41.8)	20.1 (44.3)	22.5 (49.6)				11.7 (25.7)	13.0 (28.6)				
32 (104'12")	18.0 (39.6)	19.0 (41.8)	21.1 (46.5)				11.0 (24.2)	12.1 (26.6)	13.3 (29.3)			
34 (111'7")	17.0 (37.4)	18.0 (39.6)	19.9 (43.8)	19.8 (43.6)			10.4 (22.9)	11.3 (24.9)	12.3 (27.1)			
36 (118'1")	15.7 (34.6)	17.0 (37.4)	18.8 (41.4)	18.4 (40.5)			9.8 (21.6)	10.7 (23.5)	11.6 (25.5)			
38 (124'8")	14.5 (31.9)	16.2 (35.7)	17.9 (39.4)	17.1 (37.6)			9.3 (20.5)	10.1 (22.2)	10.9 (24)			
40 (131'3")	13.4 (29.5)	15.3 (33.7)	16.7 (36.8)	16.0 (35.2)	15.1 (33.2)		8.8 (19.4)	9.5 (20.9)	10.3 (22.7)	11.1 (24.4)		
42 (137'10")	12.3 (27.1)	14.2 (31.3)	15.5 (34.1)	15.0 (33)	14.2 (31.3)		8.4 (18.5)	9.0 (19.8)	9.7 (21.3)	10.5 (23.1)		
44 (144'4")	11.0 (24.2)	13.1 (28.8)	14.3 (31.5)	14.1 (31)	13.4 (29.5)		7.9 (17.4)	8.6 (18.9)	9.2 (20.2)	9.9 (21.8)		
46 (150'11")		12.1 (26.6)	13.2 (29.1)	13.3 (29.3)	12.5 (27.5)	11.9 (26.2)	7.5 (16.5)	8.1 (17.8)	8.7 (19.1)	9.4 (20.7)	10.1 (22.2)	
48 (157'6")			12.2 (26.8)	12.5 (27.5)	11.8 (26)	11.2 (24.6)	7.1 (15.6)	7.7 (16.9)	8.3 (18.2)	8.9 (19.6)	9.6 (21.1)	
50 (164'0")			11.3 (24.9)	11.8 (26)	11.2 (24.6)	10.6 (23.3)	6.8 (14.9)	7.3 (16)	7.9 (17.4)	8.4 (18.5)	9.1 (20)	
52 (170'7")				11.3 (24.9)	10.6 (23.3)	10.1 (22.2)	6.5 (14.3)	6.9 (15.2)	7.4 (16.3)	8.1 (17.8)	8.6 (18.9)	9.2 (20.2)
54 (177'2")					10.1 (22.2)	9.6 (21.1)		6.6 (14.5)	7.1 (15.6)	7.7 (16.9)	8.2 (18)	8.8 (19.4)
56 (183'9")						9.1 (20)		6.4 (14.1)	6.8 (14.9)	7.3 (16)	7.8 (17.1)	8.3 (18.2)
58 (190'3")									6.5 (14.3)	6.9 (15.2)	7.4 (16.3)	8.0 (17.6)
60 (196'10")										6.7 (14.7)	7.2 (15.8)	7.5 (16.5)
62 (203'5")											6.8 (14.9)	7.2 (15.8)
64 (209'12")											6.5 (14.3)	6.9 (15.2)
66 (216'6")												6.6 (14.5)
68 (223'1")												

- Notes: 1. The actual lifting load is the value of the rated lifting load in the table deducted by the weights of the hook blocks, hangers and wire ropes reeving between the hook block and boom/jib head.
2. The rated lifting load in the charts is the value when the crane is hoisting load on level and hard ground and the load is slowly and steadily hoisted, and meanwhile the crane is not traveling.
3. Rated load is within 75% of tipping load.
4. Cells 40% grayed and italicized indicate that the operating condition is with both the standard counterweight and additional counterweight; and cells framed and grayed indicate that the lifting capacity depends on strength of boom system.

Load Charts of LJ Operating Condition

Load Charts of SCC2500C LJ Operating Condition										
(not including main hook, counterweight 85.2t+5.8t (187,800lb+12,800lb) unit: kg(lb)×1000										
Length of main boom(m)	31.5									
(ft)	(103'4")									
Length of jib(m)	61									
(ft)	(200'2")									
Angle of main boom(°)	88	83	78	73	68	63				
Load radius(m)										
14 (45'11")										
16 (52'6")										
18 (59'1")										
20 (65'7")										
22 (72'2")	9.3 (20.5)									
24 (78'9")	8.7 (19.1)									
26 (85'4")	8.0 (17.6)									
28 (91'10")	7.4 (16.3)	8.3 (18.2)								
30 (98'5")	6.9 (15.2)	7.7 (16.9)								
32 (104'12")	6.4 (14.1)	7.1 (15.6)								
34 (111'7")	5.7 (12.5)	6.6 (14.5)								
36 (118'1")	5.0 (11)	5.9 (13)	6.7 (14.7)							
38 (124'8")	4.4 (9.7)	5.2 (11.4)	6.2 (13.6)							
40 (131'3")	3.8 (8.3)	4.6 (10.1)	5.5 (12.1)							
42 (137'10")	3.3 (7.2)	4.0 (8.8)	4.8 (10.5)							
44 (144'4")	2.8 (6.1)	3.5 (7.7)	4.2 (9.2)	5.1 (11.2)						
46 (150'11")	2.3 (5)	3.0 (6.6)	3.7 (8.1)	4.4 (9.7)						
48 (157'6")	1.9 (4.1)	2.6 (5.7)	3.2 (7)	3.9 (8.5)						
50 (164'0")		2.0 (4.4)	2.7 (5.9)	3.4 (7.4)						
52 (170'7")			2.2 (4.8)	2.9 (6.3)						
54 (177'2")			1.8 (3.9)	2.3 (5)						
56 (183'9")				1.9 (4.1)						
58 (190'3")										
60 (196'10")										
62 (203'5")										
64 (209'12")										
66 (216'6")										
68 (223'1")										

- Notes: 1. The actual lifting load is the value of the rated lifting load in the table deducted by the weights of the hook blocks, hangers and wire ropes reeving between the hook block and boom/jib head.
2. The rated lifting load in the charts is the value when the crane is hoisting load on level and hard ground and the load is slowly and steadily hoisted, and meanwhile the crane is not traveling.
3. Rated load is within 75% of tipping load.
4. Cells 40% grayed and italicized indicate that the operating condition is with both the standard counterweight and additional counterweight; and cells framed and grayed indicate that the lifting capacity depends on strength of boom system.

Load Charts of LJ Operating Condition

Load Charts of SCC2500C LJ Operating Condition												
(not including main hook, counterweight 85.2t+5.8t (187,800lb+12,800lb)) unit: kg (lb)×1000												
Length of main boom(m)	43.5											
(ft)	(142'9")											
Length of jib(m)	22						25					
(ft)	(72'2")						(82'0")					
Angle of main boom(°)												
Load radius(m)	88	83	78	73	68	63	88	83	78	73	68	63
10												
(32'10")												
12	54.6						54.6					
(39'4")	(120.3)						(120.3)					
14	54.6						54.6					
(45'11")	(120.3)						(120.3)					
16	50.7	48.2					50.4					
(52'6")	(111.7)	(106.2)					(111.1)					
18	42.2	43.0					43.0	42.8				
(59'1")	(93)	(94.7)					(94.7)	(94.3)				
20	36.0	38.9					36.7	38.7				
(65'7")	(79.3)	(85.7)					(80.9)	(85.3)				
22	31.1	35.5	33.2				31.8	35.3				
(72'2")	(68.5)	(78.2)	(73.1)				(70.1)	(77.8)				
24	26.2	32.6	30.4				27.9	32.4	30.4			
(78'9")	(57.7)	(71.8)	(67)				(61.5)	(71.4)	(67)			
26		30.0	28.1				24.7	30.0	28.1			
(85'4")		(66.1)	(61.9)				(54.4)	(66.1)	(61.9)			
28		26.9	25.6	24.1			27.3	25.5	24.0			
(91'10")		(59.3)	(56.4)	(53.1)			(60.1)	(56.2)	(52.9)			
30			23.5	22.0			24.8	23.4	21.9			
(98'5")			(51.8)	(48.5)			(54.6)	(51.5)	(48.2)			
32			21.6	20.3	18.8			21.5	20.3			
(104'12")			(47.6)	(44.7)	(41.4)			(47.3)	(44.7)			
34				18.8	17.3			20.0	18.8	17.3		
(111'7")				(41.4)	(38.1)			(44)	(41.4)	(38.1)		
36					16.1				17.4	16.0		
(118'1")					(35.4)				(38.3)	(35.2)		
38					15.1	14.1			16.3	15.0		
(124'8")					(33.2)	(31)			(35.9)	(33)		
40						13.2				14.0	13.1	
(131'3")						(29.1)				(30.8)	(28.8)	
42						12.3				13.2	12.2	
(137'10")						(27.1)				(29.1)	(26.8)	
44											11.5	
(144'4")											(25.3)	
46												
(150'11")												
48												
(157'6")												
50												
(164'0")												
52												
(170'7")												
54												
(177'2")												
56												
(183'9")												
58												
(190'3")												

- Notes: 1. The actual lifting load is the value of the rated lifting load in the table deducted by the weights of the hook blocks, hangers and wire ropes reeving between the hook block and boom/jib head.
2. The rated lifting load in the charts is the value when the crane is hoisting load on level and hard ground and the load is slowly and steadily hoisted, and meanwhile the crane is not traveling.
3. Rated load is within 75% of tipping load.
4. Cells 40% grayed and italicized indicate that the operating condition is with both the standard counterweight and additional counterweight; and cells framed and grayed indicate that the lifting capacity depends on strength of boom system.

Load Charts of LJ Operating Condition

Load Charts of SCC2500C LJ Operating Condition												
(not including main hook, counterweight 85.2t+5.8t (187,800lb+12,800lb)) unit: kg(lb)×1000												
Length of main boom(m)	43.5											
(ft)	(142'9")											
Length of jib(m)	31						37					
(ft)	(101'8")						(121'5")					
Angle of main boom(°)												
Load radius(m)	88	83	78	73	68	63	88	83	78	73	68	63
10												
(32'10")												
12												
(39'4")												
14	53.0											
(45'11")	(116.8)											
16	48.2						40.7					
(52'6")	(106.2)						(89.7)					
18	43.2						38.9					
(59'1")	(95.2)						(85.7)					
20	36.9	37.1					36.0					
(65'7")	(81.3)	(81.7)					(79.3)					
22	32.1	33.9					33.2	32.5				
(72'2")	(70.7)	(74.7)					(73.1)	(71.6)				
24	28.3	31.0					29.2	29.9				
(78'9")	(62.3)	(68.3)					(64.3)	(65.9)				
26	25.1	28.7	26.7				25.9	27.5				
(85'4")	(55.3)	(63.2)	(58.8)				(57)	(60.6)				
28	22.4	26.6	24.8				23.3	25.6	23.8			
(91'10")	(49.3)	(58.6)	(54.6)				(51.3)	(56.4)	(52.4)			
30	20.2	24.9	23.1				21.0	23.9	22.1			
(98'5")	(44.5)	(54.8)	(50.9)				(46.2)	(52.6)	(48.7)			
32	18.3	22.6	21.2	19.9			19.1	22.3	20.7			
(104'12")	(40.3)	(49.8)	(46.7)	(43.8)			(42.1)	(49.1)	(45.6)			
34		20.4	19.7	18.4			17.4	20.8	19.4			
(111'7")		(44.9)	(43.4)	(40.5)			(38.3)	(45.8)	(42.7)			
36		18.5	18.3	17.1			15.9	19.0	18.3	16.8		
(118'1")		(40.7)	(40.3)	(37.6)			(35)	(41.8)	(40.3)	(37)		
38			17.0	15.9	14.6		14.6	17.3	17.1	15.8		
(124'8")			(37.4)	(35)	(32.1)		(32.1)	(38.1)	(37.6)	(34.8)		
40			16.0	14.9	13.7			15.9	16.0	14.8		
(131'3")			(35.2)	(32.8)	(30.2)			(35)	(35.2)	(32.6)		
42				14.0	12.8			14.6	15.1	13.9	12.9	
(137'10")				(30.8)	(28.2)			(32.1)	(33.2)	(30.6)	(28.4)	
44				13.2	12.0	11.2			14.2	13.1	12.0	
(144'4")				(29.1)	(26.4)	(24.6)			(31.3)	(28.8)	(26.4)	
46					11.3	10.5			13.4	12.3	11.3	
(150'11")					(24.9)	(23.1)			(29.5)	(27.1)	(24.9)	
48					10.7	9.9				11.6	10.7	9.8
(157'6")					(23.5)	(21.8)				(25.5)	(23.5)	(21.6)
50						9.4				11.0	10.1	9.2
(164'0")						(20.7)				(24.2)	(22.2)	(20.2)
52											9.6	8.7
(170'7")											(21.1)	(19.1)
54											9.1	8.3
(177'2")											(20)	(18.2)
56												7.9
(183'9")												(17.4)
58												
(190'3")												

- Notes: 1. The actual lifting load is the value of the rated lifting load in the table deducted by the weights of the hook blocks, hangers and wire ropes reeving between the hook block and boom/jib head.
2. The rated lifting load in the charts is the value when the crane is hoisting load on level and hard ground and the load is slowly and steadily hoisted, and meanwhile the crane is not traveling.
3. Rated load is within 75% of tipping load.
4. Cells 40% grayed and italicized indicate that the operating condition is with both the standard counterweight and additional counterweight; and cells framed and grayed indicate that the lifting capacity depends on strength of boom system.

Load Charts of LJ Operating Condition

Load Charts of SCC2500C LJ Operating Condition												
(not including main hook, counterweight 85.2t+5.8t (187,800lb+12,800lb) unit: kg(lb)×1000												
Length of main boom(m) (ft)	43.5 (142'9")											
Length of jib(m) (ft)	43 (141'1")						52 (170'7")					
Angle of main boom (°)	88	83	78	73	68	63	88	83	78	73	68	63
Load radius(m)	88	83	78	73	68	63	88	83	78	73	68	63
16 (52'6")	30.3 (66.7)											
18 (59'1")	28.9 (63.7)											
20 (65'7")	26.6 (58.6)						17.0 (37.4)					
22 (72'2")	24.8 (54.6)						15.7 (34.6)					
24 (78'9")	23.1 (50.9)	25.5 (56.2)					14.6 (32.1)					
26 (85'4")	21.6 (47.6)	23.8 (52.4)					13.6 (29.9)					
28 (91'10")	20.3 (44.7)	22.2 (48.9)					12.6 (27.7)	14.5 (31.9)				
30 (98'5")	19.1 (42.1)	20.9 (46)					11.8 (26)	13.5 (29.7)				
32 (104'12")	18.1 (39.9)	19.7 (43.4)	19.7 (43.4)				11.1 (24.4)	12.6 (27.7)				
34 (111'7")	17.1 (37.6)	18.6 (41)	18.5 (40.7)				10.5 (23.1)	11.8 (26)				
36 (118'1")	15.8 (34.8)	17.6 (38.8)	17.3 (38.1)				9.9 (21.8)	11.1 (24.4)	12.5 (27.5)			
38 (124'8")	14.6 (32.1)	16.7 (36.8)	16.3 (35.9)	15.0 (33)			9.3 (20.5)	10.4 (22.9)	11.7 (25.7)			
40 (131'3")	13.5 (29.7)	15.9 (35)	15.4 (33.9)	14.1 (31)			8.8 (19.4)	9.8 (21.6)	11.0 (24.2)			
42 (137'10")	12.4 (27.3)	14.9 (32.8)	14.6 (32.1)	13.7 (30.2)			8.4 (18.5)	9.3 (20.5)	10.4 (22.9)	11.6 (25.5)		
44 (144'4")	11.4 (25.1)	13.8 (30.4)	13.7 (30.2)	12.5 (27.5)	11.5 (25.3)		8.0 (17.6)	8.8 (19.4)	9.8 (21.6)	10.9 (24)		
46 (150'11")		12.8 (28.2)	12.9 (28.4)	11.8 (26)	10.8 (23.8)		7.5 (16.5)	8.4 (18.5)	9.3 (20.5)	10.3 (22.7)		
48 (157'6")		11.8 (26)	12.1 (26.6)	11.1 (24.4)	10.1 (22.2)		7.1 (15.6)	8.0 (17.6)	8.8 (19.4)	9.8 (21.6)		
50 (164'0")			11.5 (25.3)	10.5 (23.1)	9.5 (20.9)		6.8 (14.9)	7.5 (16.5)	8.4 (18.5)	9.2 (20.2)	9.6 (21.1)	
52 (170'7")			10.9 (24)	9.9 (21.8)	9.0 (19.8)	8.2 (18)	6.5 (14.3)	7.1 (15.6)	7.9 (17.4)	8.8 (19.4)	9.0 (19.8)	
54 (177'2")				9.4 (20.7)	8.6 (18.9)	7.7 (16.9)	6.2 (13.6)	6.8 (14.9)	7.5 (16.5)	8.3 (18.2)	8.6 (18.9)	
56 (183'9")				9.0 (19.8)	8.1 (17.8)	7.2 (15.8)		6.5 (14.3)	7.1 (15.6)	7.9 (17.4)	8.1 (17.8)	
58 (190'3")					7.7 (16.9)	6.8 (14.9)			6.8 (14.9)	7.5 (16.5)	7.7 (16.9)	6.5 (14.3)
60 (196'10")					7.3 (16)	6.5 (14.3)			6.5 (14.3)	7.1 (15.6)	7.1 (15.6)	6.1 (13.4)
62 (203'5")						6.2 (13.6)				6.8 (14.9)	6.8 (14.9)	5.8 (12.7)
64 (209'12")										6.5 (14.3)	6.4 (14.1)	5.5 (12.1)
66 (216'6")											6.1 (13.4)	5.1 (11.2)
68 (223'1")											5.8 (12.7)	4.9 (10.8)
70 (229'8")												4.6 (10.1)
72 (236'3")												4.4 (9.7)

- Notes: 1. The actual lifting load is the value of the rated lifting load in the table deducted by the weights of the hook blocks, hangers and wire ropes reeving between the hook block and boom/jib head.
2. The rated lifting load in the charts is the value when the crane is hoisting load on level and hard ground and the load is slowly and steadily hoisted, and meanwhile the crane is not traveling.
3. Rated load is within 75% of tipping load.
4. Cells 40% grayed and italicized indicate that the operating condition is with both the standard counterweight and additional counterweight; and cells framed and grayed indicate that the lifting capacity depends on strength of boom system.

Load Charts of LJ Operating Condition

Load Charts of SCC2500C LJ Operating Condition										
(not including main hook, counterweight 85.2t+5.8t (187,800lb+12,800lb) unit: kg(lb)×1000										
Length of main boom(m)	43.5									
(ft)	(142'9")									
Length of jib(m)	61									
(ft)	(200'2")									
Angle of main boom(°)	88	83	78	73	68	63				
Load radius(m)										
14 (45'11")										
16 (52'6")										
18 (59'1")										
20 (65'7")										
22 (72'2")	9.5 (20.9)									
24 (78'9")	8.8 (19.4)									
26 (85'4")	8.1 (17.8)									
28 (91'10")	7.5 (16.5)									
30 (98'5")	6.9 (15.2)	8.1 (17.8)								
32 (104'12")	6.5 (14.3)	7.4 (16.3)								
34 (111'7")	5.8 (12.7)	6.9 (15.2)								
36 (118'1")	5.1 (11.2)	6.4 (14.1)								
38 (124'8")	4.5 (9.9)	5.7 (12.5)								
40 (131'3")	3.9 (8.5)	5.0 (11)	6.3 (13.8)							
42 (137'10")	3.4 (7.4)	4.4 (9.7)	5.6 (12.3)							
44 (144'4")	2.9 (6.3)	3.8 (8.3)	5.0 (11)							
46 (150'11")	2.3 (5)	3.3 (7.2)	4.4 (9.7)							
48 (157'6")	1.9 (4.1)	2.8 (6.1)	3.8 (8.3)	4.9 (10.8)						
50 (164'0")		2.3 (5)	3.3 (7.2)	4.3 (9.4)						
52 (170'7")		1.9 (4.1)	2.8 (6.1)	3.7 (8.1)						
54 (177'2")			2.3 (5)	3.2 (7)						
56 (183'9")			1.8 (3.9)	2.7 (5.9)						
58 (190'3")				2.2 (4.8)						
60 (196'10")										
62 (203'5")										
64 (209'12")										
66 (216'6")										
68 (223'1")										

- Notes: 1. The actual lifting load is the value of the rated lifting load in the table deducted by the weights of the hook blocks, hangers and wire ropes reeving between the hook block and boom/jib head.
2. The rated lifting load in the charts is the value when the crane is hoisting load on level and hard ground and the load is slowly and steadily hoisted, and meanwhile the crane is not traveling.
3. Rated load is within 75% of tipping load.
4. Cells 40% grayed and italicized indicate that the operating condition is with both the standard counterweight and additional counterweight; and cells framed and grayed indicate that the lifting capacity depends on strength of boom system.

Load Charts of LJ Operating Condition

Load Charts of SCC2500C LJ Operating Condition												
(not including main hook, counterweight 85.2t+5.8t (187,800lb+12,800lb)) unit: kg(lb)×1000												
Length of main boom(m) (ft)	52.5 (172'3")											
Length of jib(m) (ft)	22 (72'2")					25 (82'0")						
Angle of main boom(°)	88	83	78	73	68	63	88	83	78	73	68	63
Load radius(m)	88	83	78	73	68	63	88	83	78	73	68	63
12 (39'4")	41.3 (91)											
14 (45'11")	41.3 (91)						41.3 (91)					
16 (52'6")	41.3 (91)						41.3 (91)					
18 (59'1")	41.3 (91)	39.8 (87.7)					41.3 (91)	39.7 (87.5)				
20 (65'7")	37.0 (81.5)	35.9 (79.1)					37.4 (82.4)	35.9 (79.1)				
22 (72'2")	31.9 (70.3)	32.8 (72.3)					32.3 (71.2)	32.8 (72.3)				
24 (78'9")	27.5 (60.6)	30.2 (66.5)	27.5 (60.6)				28.4 (62.6)	30.2 (66.5)				
26 (85'4")		27.9 (61.5)	25.4 (55.9)				25.0 (55.1)	27.9 (61.5)	25.5 (56.2)			
28 (91'10")		26.0 (57.3)	23.6 (52)				20.5 (45.1)	26.0 (57.3)	23.7 (52.2)			
30 (98'5")			22.0 (48.5)	19.9 (43.8)				24.4 (53.7)	22.0 (48.5)			
32 (104'12")			20.6 (45.4)	18.6 (41)				22.5 (49.6)	20.5 (45.1)	18.8 (41.4)		
34 (111'7")			19.2 (42.3)	17.4 (38.3)					19.0 (41.8)	17.3 (38.1)		
36 (118'1")				16.3 (35.9)	14.7 (32.4)				17.6 (38.8)	16.1 (35.4)		
38 (124'8")				15.3 (33.7)	13.7 (30.2)					15.1 (33.2)	13.4 (29.5)	
40 (131'3")					12.8 (28.2)					14.1 (31)	12.5 (27.5)	
42 (137'10")					11.9 (26.2)	10.7 (23.5)					11.7 (25.7)	
44 (144'4")						10.0 (22)					11.0 (24.2)	9.7 (21.3)
46 (150'11")						9.4 (20.7)						9.1 (20)
48 (157'6")												8.5 (18.7)
50 (164'0")												
52 (170'7")												
54 (177'2")												
56 (183'9")												
58 (190'3")												
60 (196'10")												
62 (203'5")												

- Notes: 1. The actual lifting load is the value of the rated lifting load in the table deducted by the weights of the hook blocks, hangers and wire ropes reeving between the hook block and boom/jib head.
2. The rated lifting load in the charts is the value when the crane is hoisting load on level and hard ground and the load is slowly and steadily hoisted, and meanwhile the crane is not traveling.
3. Rated load is within 75% of tipping load.
4. Cells 40% grayed and italicized indicate that the operating condition is with both the standard counterweight and additional counterweight; and cells framed and grayed indicate that the lifting capacity depends on strength of boom system.

Load Charts of LJ Operating Condition

Load Charts of SCC2500C LJ Operating Condition												
(not including main hook, counterweight 85.2t+5.8t (187,800lb+12,800lb) unit: kg(lb)×1000												
Length of main boom(m) (ft)	52.5 (172'3")						37 (121'5")					
Length of jib(m) (ft)	31 (101'8")						37 (121'5")					
Angle of main boom(°)	88	83	78	73	68	63	88	83	78	73	68	63
Load radius(m)												
12 (39'4")												
14 (45'11")	41.3 (91)											
16 (52'6")	41.3 (91)						36.6 (80.6)					
18 (59'1")	40.8 (89.9)						36.1 (79.5)					
20 (65'7")	37.0 (81.5)	34.5 (76)					35.6 (78.4)					
22 (72'2")	33.2 (73.1)	31.4 (69.2)					32.5 (71.6)					
24 (78'9")	29.1 (64.1)	28.9 (63.7)					29.7 (65.4)	27.7 (61)				
26 (85'4")	26.0 (57.3)	26.6 (58.6)					26.3 (57.9)	25.6 (56.4)				
28 (91'10")	23.1 (50.9)	24.7 (54.4)	22.5 (49.6)				23.6 (52)	23.8 (52.4)				
30 (98'5")	20.7 (45.6)	23.1 (50.9)	20.9 (46)				21.2 (46.7)	22.1 (48.7)	20.0 (44)			
32 (104'12")	18.8 (41.4)	21.6 (47.6)	19.6 (43.2)				19.3 (42.5)	20.7 (45.6)	18.7 (41.2)			
34 (111'7")		20.4 (44.9)	18.4 (40.5)	16.5 (36.3)			17.5 (38.5)	19.4 (42.7)	17.5 (38.5)			
36 (118'1")		19.3 (42.5)	17.3 (38.1)	15.5 (34.1)			16.1 (35.4)	18.3 (40.3)	16.4 (36.1)			
38 (124'8")		17.9 (39.4)	16.3 (35.9)	14.7 (32.4)			14.8 (32.6)	17.3 (38.1)	15.5 (34.1)	13.9 (30.6)		
40 (131'3")			15.3 (33.7)	13.9 (30.6)				16.5 (36.3)	14.7 (32.4)	13.1 (28.8)		
42 (137'10")			14.3 (31.5)	13.1 (28.8)	11.5 (25.3)			15.2 (33.5)	13.9 (30.6)	12.3 (27.1)		
44 (144'4")				12.2 (26.8)	10.8 (23.8)			14.0 (30.8)	13.3 (29.3)	11.7 (25.7)	10.3 (22.7)	
46 (150'11")				11.5 (25.3)	10.1 (22.2)				12.5 (27.5)	11.1 (24.4)	9.7 (21.3)	
48 (157'6")					9.6 (21.1)	8.2 (18)			11.8 (26)	10.5 (23.1)	9.3 (20.5)	
50 (164'0")					9.0 (19.8)	7.7 (16.9)				9.9 (21.8)	8.8 (19.4)	
52 (170'7")						7.2 (15.8)				9.4 (20.7)	8.3 (18.2)	6.8 (14.9)
54 (177'2")						6.8 (14.9)					7.8 (17.1)	6.4 (14.1)
56 (183'9")											7.3 (16)	6.0 (13.2)
58 (190'3")												5.6 (12.3)
60 (196'10")												5.3 (11.6)
62 (203'5")												

- Notes:
1. The actual lifting load is the value of the rated lifting load in the table deducted by the weights of the hook blocks, hangers and wire ropes reeving between the hook block and boom/jib head.
 2. The rated lifting load in the charts is the value when the crane is hoisting load on level and hard ground and the load is slowly and steadily hoisted, and meanwhile the crane is not traveling.
 3. Rated load is within 75% of tipping load.
 4. Cells 40% grayed and italicized indicate that the operating condition is with both the standard counterweight and additional counterweight; and cells framed and grayed indicate that the lifting capacity depends on strength of boom system.

Load Charts of LJ Operating Condition

Load Charts of SCC2500C LJ Operating Condition												
(not including main hook, counterweight 85.2t+5.8t (187,800lb+12,800lb)) unit: kg(lb)×1000												
Length of main boom(m)	52.5 (172'3")											
(ft)	43 (141'1")						52 (170'7")					
Length of jib(m)												
(ft)												
Angle of main boom(°)												
Load radius(m)	88	83	78	73	68	63	88	83	78	73	68	63
18 (59'1")	27.3 (60.1)											
20 (65'7")	26.9 (59.3)						17.2 (37.9)					
22 (72'2")	25.0 (55.1)						15.9 (35)					
24 (78'9")	23.3 (51.3)						14.7 (32.4)					
26 (85'4")	21.7 (47.8)	24.7 (54.4)					13.7 (30.2)					
28 (91'10")	20.4 (44.9)	23.1 (50.9)					12.8 (28.2)	15.1 (33.2)				
30 (98'5")	19.2 (42.3)	21.6 (47.6)					11.9 (26.2)	14.0 (30.8)				
32 (104'12")	18.2 (40.1)	20.3 (44.7)					11.2 (24.6)	13.1 (28.8)				
34 (111'7")	17.1 (37.6)	19.2 (42.3)	17.5 (38.5)				10.5 (23.1)	12.2 (26.8)				
36 (118'1")	16.0 (35.2)	18.2 (40.1)	16.5 (36.3)				9.9 (21.8)	11.4 (25.1)				
38 (124'8")	14.7 (32.4)	17.1 (37.6)	15.6 (34.3)				9.4 (20.7)	10.7 (23.5)	12.4 (27.3)			
40 (131'3")	13.6 (29.9)	16.3 (35.9)	14.7 (32.4)	13.2 (29.1)			8.9 (19.6)	10.1 (22.2)	11.6 (25.5)			
42 (137'10")	12.4 (27.3)	15.5 (34.1)	14.0 (30.8)	12.4 (27.3)			8.4 (18.5)	9.6 (21.1)	10.9 (24)			
44 (144'4")	11.5 (25.3)	14.3 (31.5)	13.1 (28.8)	11.7 (25.7)			8.0 (17.6)	9.0 (19.8)	10.3 (22.7)			
46 (150'11")		13.3 (29.3)	12.3 (27.1)	11.2 (24.6)			7.5 (16.5)	8.6 (18.9)	9.7 (21.3)	10.2 (22.4)		
48 (157'6")		12.2 (26.8)	11.6 (25.5)	10.5 (23.1)	8.9 (19.6)		7.1 (15.6)	8.1 (17.8)	9.2 (20.2)	9.7 (21.3)		
50 (164'0")		11.3 (24.9)	11.0 (24.2)	10.0 (22)	8.3 (18.2)		6.8 (14.9)	7.7 (16.9)	8.7 (19.1)	9.2 (20.2)		
52 (170'7")			10.4 (22.9)	9.4 (20.7)	7.8 (17.1)		6.5 (14.3)	7.3 (16)	8.3 (18.2)	8.8 (19.4)		
54 (177'2")			9.9 (21.8)	9.0 (19.8)	7.3 (16)		6.2 (13.6)	6.9 (15.2)	7.9 (17.4)	8.4 (18.5)	7.0 (15.4)	
56 (183'9")				8.5 (18.7)	6.8 (14.9)	5.7 (12.5)		6.6 (14.5)	7.4 (16.3)	8.0 (17.6)	6.5 (14.3)	
58 (190'3")				8.1 (17.8)	6.5 (14.3)	5.4 (11.9)		6.3 (13.8)	7.1 (15.6)	7.5 (16.5)	6.1 (13.4)	
60 (196'10")					6.1 (13.4)	5.1 (11.2)			6.7 (14.7)	7.1 (15.6)	5.8 (12.7)	
62 (203'5")					5.8 (12.7)	4.7 (10.3)			6.5 (14.3)	6.8 (14.9)	5.4 (11.9)	4.2 (9.2)
64 (209'12")						4.5 (9.9)				6.4 (14.1)	5.1 (11.2)	3.9 (8.5)
66 (216'6")						4.2 (9.2)				6.1 (13.4)	4.8 (10.5)	3.6 (7.9)
68 (223'1")											4.5 (9.9)	3.4 (7.4)
70 (229'8")											4.3 (9.4)	3.2 (7)
72 (236'3")											4.1 (9)	3.0 (6.6)
74 (242'9")												2.8 (6.1)
76 (249'4")												2.6 (5.7)

- Notes: 1. The actual lifting load is the value of the rated lifting load in the table deducted by the weights of the hook blocks, hangers and wire ropes reeving between the hook block and boom/jib head.
2. The rated lifting load in the charts is the value when the crane is hoisting load on level and hard ground and the load is slowly and steadily hoisted, and meanwhile the crane is not traveling.
3. Rated load is within 75% of tipping load.
4. Cells 40% grayed and italicized indicate that the operating condition is with both the standard counterweight and additional counterweight; and cells framed and grayed indicate that the lifting capacity depends on strength of boom system.

Load Charts of LJ Operating Condition

Load Charts of SCC2500C LJ Operating Condition										
(not including main hook, counterweight 85.2t+5.8t (187,800lb+12,800lb)) unit: kg(lb)×1000										
Length of main boom(m)	52.5									
(ft)	(172'3")									
Length of jib(m)	61									
(ft)	(200'2")									
Angle of main boom(°)	88	83	78	73	68	63				
Load radius (m)										
16 (52'6")										
18 (59'1")										
20 (65'7")										
22 (72'2")	9.6 (21.1)									
24 (78'9")	8.8 (19.4)									
26 (85'4")	7.9 (17.4)									
28 (91'10")	6.8 (14.9)									
30 (98'5")	5.8 (12.7)									
32 (104'12")	5.0 (11)	7.8 (17.1)								
34 (111'7")	4.2 (9.2)	7.1 (15.6)								
36 (118'1")	3.5 (7.7)	6.7 (14.7)								
38 (124'8")	2.8 (6.1)	6.1 (13.4)								
40 (131'3")	2.1 (4.6)	5.4 (11.9)	6.8 (14.9)							
42 (137'10")		4.7 (10.3)	6.3 (13.8)							
44 (144'4")		4.1 (9)	5.6 (12.3)							
46 (150'11")		3.6 (7.9)	4.9 (10.8)							
48 (157'6")		3.1 (6.8)	4.3 (9.4)							
50 (164'0")		2.6 (5.7)	3.7 (8.1)	5.0 (11)						
52 (170'7")		2.1 (4.6)	3.2 (7)	4.4 (9.7)						
54 (177'2")			2.7 (5.9)	3.9 (8.5)						
56 (183'9")			2.2 (4.8)	3.3 (7.2)						
58 (190'3")			1.8 (3.9)	2.9 (6.3)						
60 (196'10")				2.3 (5)						
62 (203'5")				1.9 (4.1)						
64 (209'12")										
66 (216'6")										
68 (223'1")										
70 (229'8")										

- Notes: 1. The actual lifting load is the value of the rated lifting load in the table deducted by the weights of the hook blocks, hangers and wire ropes reeving between the hook block and boom/jib head.
2. The rated lifting load in the charts is the value when the crane is hoisting load on level and hard ground and the load is slowly and steadily hoisted, and meanwhile the crane is not traveling.
3. Rated load is within 75% of tipping load.
4. Cells 40% grayed and italicized indicate that the operating condition is with both the standard counterweight and additional counterweight; and cells framed and grayed indicate that the lifting capacity depends on strength of boom system.

Load Charts of LJ Operating Condition

Load Charts of SCC2500C LJ Operating Condition												
(not including main hook, counterweight 85.2t+5.8t (187,800lb+12,800lb)) unit: kg(lb)×1000												
Length of main boom(m) (ft)	61.5 (201'9")											
Length of jib(m) (ft)	31 (101'8")						37 (121'5")					
Angle of main boom(°)	88	83	78	73	68	63	88	83	78	73	68	63
Load radius(m)												
14 (45'11")	34.2 (75.3)											
16 (52'6")	30.8 (67.9)						27.3 (60.1)					
18 (59'1")	28.1 (61.9)						27.3 (60.1)					
20 (65'7")	25.8 (56.8)						25.4 (55.9)					
22 (72'2")	23.8 (52.4)	28.8 (63.4)					23.5 (51.8)					
24 (78'9")	22.1 (48.7)	26.3 (57.9)					21.7 (47.8)	25.1 (55.3)				
26 (85'4")	20.6 (45.4)	23.9 (52.6)					20.2 (44.5)	23.2 (51.1)				
28 (91'10")	19.4 (42.7)	22.4 (49.3)					18.9 (41.6)	21.5 (47.3)				
30 (98'5")	18.3 (40.3)	20.8 (45.8)	18.7 (41.2)				17.7 (39)	20.0 (44)				
32 (104'12")	17.3 (38.1)	19.5 (42.9)	17.4 (38.3)				16.7 (36.8)	18.8 (41.4)	17.6 (38.8)			
34 (111'7")	16.6 (36.5)	18.3 (40.3)	16.3 (35.9)				15.8 (34.8)	17.6 (38.8)	16.5 (36.3)			
36 (118'1")		17.2 (37.9)	15.4 (33.9)				15.0 (33)	16.6 (36.5)	15.6 (34.3)			
38 (124'8")		16.4 (36.1)	14.5 (31.9)	12.4 (27.3)			14.4 (31.7)	15.7 (34.6)	14.7 (32.4)			
40 (131'3")			13.8 (30.4)	11.7 (25.7)			13.0 (28.6)	14.9 (32.8)	13.9 (30.6)	12.0 (26.4)		
42 (137'10")			13.1 (28.8)	11.1 (24.4)				14.2 (31.3)	13.2 (29.1)	11.3 (24.9)		
44 (144'4")			12.4 (27.3)	10.5 (23.1)	8.8 (19.4)			13.6 (29.9)	12.6 (27.7)	10.7 (23.5)		
46 (150'11")				10.0 (22)	8.3 (18.2)				11.8 (26)	10.2 (22.4)		
48 (157'6")				9.6 (21.1)	7.9 (17.4)				11.2 (24.6)	9.7 (21.3)	7.4 (16.3)	
50 (164'0")				9.2 (20.2)	7.3 (16)				10.6 (23.3)	9.3 (20.5)	6.9 (15.2)	
52 (170'7")					6.8 (14.9)	5.1 (11.2)				8.7 (19.1)	6.5 (14.3)	
54 (177'2")					6.4 (14.1)	4.7 (10.3)				8.2 (18)	6.1 (13.4)	
56 (183'9")						4.4 (9.7)					5.7 (12.5)	4.3 (9.4)
58 (190'3")						4.1 (9)					5.3 (11.6)	4.0 (8.8)
60 (196'10")											5.0 (11)	3.7 (8.1)
62 (203'5")												3.5 (7.7)
64 (209'12")												3.2 (7)
66 (216'6")												
68 (223'1")												

- Notes: 1. The actual lifting load is the value of the rated lifting load in the table deducted by the weights of the hook blocks, hangers and wire ropes reeving between the hook block and boom/jib head.
2. The rated lifting load in the charts is the value when the crane is hoisting load on level and hard ground and the load is slowly and steadily hoisted, and meanwhile the crane is not traveling.
3. Rated load is within 75% of tipping load.
4. Cells 40% grayed and italicized indicate that the operating condition is with both the standard counterweight and additional counterweight; and cells framed and grayed indicate that the lifting capacity depends on strength of boom system.

Load Charts of LJ Operating Condition

Load Charts of SCC2500C LJ Operating Condition												
(not including main hook, counterweight 85.2t+5.8t (187,800lb+12,800lb)) unit: kg(lb)*1000												
Length of main boom(m)	61.5											
(ft)	(201'9")											
Length of jib(m)	43						52					
(ft)	(141'1")						(170'7")					
Angle of main boom(°)	88	83	78	73	68	63	88	83	78	73	68	63
Load radius(m)												
18	25.9											
(59'1")	(57)											
20	25.1						17.3					
(65'7")	(55.3)						(38.1)					
22	23.1						16.0					
(72'2")	(50.9)						(35.2)					
24	21.3						14.8					
(78'9")	(46.9)						(32.6)					
26	19.8	22.8					13.8					
(85'4")	(43.6)	(50.2)					(30.4)					
28	18.5	21.1					12.9					
(91'10")	(40.7)	(46.5)					(28.4)					
30	17.3	19.7					12.0	14.5				
(98'5")	(38.1)	(43.4)					(26.4)	(31.9)				
32	16.2	18.4					11.2	13.5				
(104'12")	(35.7)	(40.5)					(24.6)	(29.7)				
34	15.3	17.1	15.7				10.6	12.6				
(111'7")	(33.7)	(37.6)	(34.6)				(23.3)	(27.7)				
36	14.5	16.1	14.8				9.9	11.8				
(118'1")	(31.9)	(35.4)	(32.6)				(21.8)	(26)				
38	13.8	15.2	13.9				9.4	11.0	12.9			
(124'8")	(30.4)	(33.5)	(30.6)				(20.7)	(24.2)	(28.4)			
40	13.1	14.4	13.2				8.9	10.4	12.1			
(131'3")	(28.8)	(31.7)	(29.1)				(19.6)	(22.9)	(26.6)			
42	12.4	13.7	12.4				8.4	9.8	11.4			
(137'10")	(27.3)	(30.2)	(27.3)				(18.5)	(21.6)	(25.1)			
44	11.6	13.0	11.7	10.0			8.0	9.3	10.8			
(144'4")	(25.5)	(28.6)	(25.7)	(22)			(17.6)	(20.5)	(23.8)			
46		12.3	11.2	9.5			7.5	8.8	10.2			
(150'11")		(27.1)	(24.6)	(20.9)			(16.5)	(19.4)	(22.4)			
48		11.8	10.6	9.0			7.1	8.3	9.7	8.1		
(157'6")		(26)	(23.3)	(19.8)			(15.6)	(18.2)	(21.3)	(17.8)		
50		11.4	10.2	8.6			6.8	7.9	9.1	7.7		
(164'0")		(25.1)	(22.4)	(18.9)			(14.9)	(17.4)	(20)	(16.9)		
52			9.7	8.1	5.9		6.5	7.4	8.6	7.2		
(170'7")			(21.3)	(17.8)	(13)		(14.3)	(16.3)	(18.9)	(15.8)		
54			9.2	7.8	5.5		6.2	7.1	8.2	6.8		
(177'2")			(20.2)	(17.1)	(12.1)		(13.6)	(15.6)	(18)	(14.9)		
56			8.8	7.2	5.2			6.7	7.8	6.5	4.9	
(183'9")			(19.4)	(15.8)	(11.4)			(14.7)	(17.1)	(14.3)	(10.8)	
58				6.8	4.8			6.4	7.3	6.2	4.5	
(190'3")				(14.9)	(10.5)			(14.1)	(16)	(13.6)	(9.9)	
60				6.5	4.5			6.2	7.0	5.9	4.1	
(196'10")				(14.3)	(9.9)			(13.6)	(15.4)	(13)	(9)	
62					4.2				6.7	5.6	3.9	
(203'5")					(9.2)				(14.7)	(12.3)	(8.5)	
64					4.0				6.4	5.3	3.7	
(209'12")					(8.8)				(14.1)	(11.6)	(8.1)	
66					3.7					5.0	3.4	
(216'6")					(8.1)					(11)	(7.4)	
68										4.7	3.2	
(223'1")										(10.3)	(7)	
70										4.4	3.0	
(229'8")										(9.7)	(6.6)	
72											2.7	
(236'3")											(5.9)	

- Notes: 1. The actual lifting load is the value of the rated lifting load in the table deducted by the weights of the hook blocks, hangers and wire ropes reeving between the hook block and boom/jib head.
2. The rated lifting load in the charts is the value when the crane is hoisting load on level and hard ground and the load is slowly and steadily hoisted, and meanwhile the crane is not traveling.
3. Rated load is within 75% of tipping load.
4. Cells 40% grayed and italicized indicate that the operating condition is with both the standard counterweight and additional counterweight; and cells framed and grayed indicate that the lifting capacity depends on strength of boom system.



SAN

Note ▶ SCC2500C Hydraulic Crawler Crane

A series of horizontal dashed lines filling most of the page, intended for handwritten notes or comments.

★We reserve the right to modify information of the brochure without any prior notice.